

1N361
 GENERAL PURPOSE

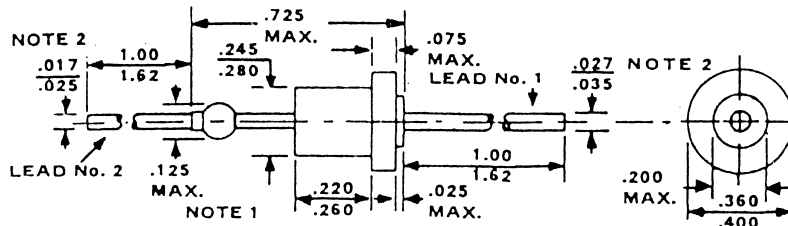
ABSOLUTE MAXIMUM RATINGS

Maximum Temperatures		
Storage Temperature		-65°C to +200°C
Operating Junction Temperature		175°C
Maximum Voltages and Current		
V _{RM(rep)}	Peak Repetitive Reverse Voltage	200 V
V _{RM(wkg)}	Working Peak Reverse Voltage	200 V
V _R	DC Blocking Voltage	200 V
V _{RM(non-rep)}	Non-Repetitive Peak Reverse Voltage (half/wave, single phase, 60 Hz Peak)	200 V
V _{RM}	rms Input Voltage	140 V

ELECTRICAL CHARACTERISTICS (25°C Ambient Temperature unless otherwise noted)

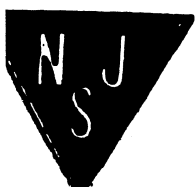
SYMBOL	CHARACTERISTIC	TYP.	MAX.	UNITS	TEST CONDITIONS
V _F	Maximum Instantaneous Forward Voltage Drop	0.95	1.10	V	I _F = 1.0 A
I _R	Maximum Reverse Current	0.01	10	μA	(Rated dc Voltage)

OUTLINE DRAWING
 DO3



NOTES:

1. DIMENSION TO ALLOW FOR PINCH OR SEAL DEFORMATION ANYWHERE ALONG TUBULATION (OPTIONAL).
2. DIAMETER TO BE CONTROLLED FROM FREE END OF LEAD TO WITHIN .188" (4.78 MM) FROM THE POINT OF ATTACHMENT TO THE BODY. WITHIN THE .188" (4.78 MM) DIMENSION, THE DIAMETER MAY VARY TO ALLOW FOR LEAD FINISHES AND IRREGULARITIES.



NJ Semi-Conductors reserves the right to change test conditions, parameter limits and package dimensions without notice. Information furnished by NJ Semi-Conductors is believed to be both accurate and reliable at the time of going to press. However, NJ Semi-Conductors assumes no responsibility for any errors or omissions discovered in its use. NJ Semi-Conductors encourages customers to verify that datasheets are current before placing orders.