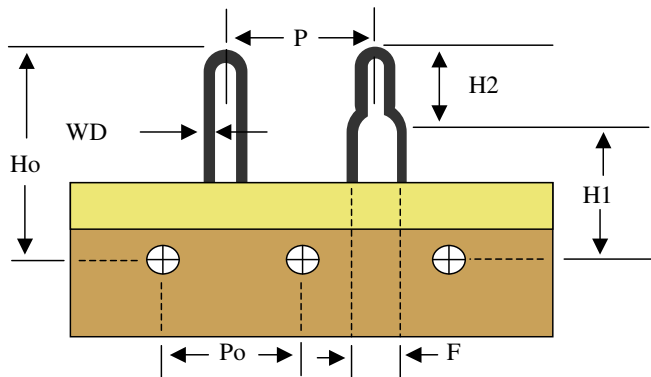


VESTAL PART NUMBER	AWG	WIRE DIAMETER (WD)	CENTER SPAN (F)	PART PITCH (P)	MAX OAH (Ho)	SEATING PLANE (H1)	FORM HEIGHT (H2)	SPROCKET HOLE PITCH (Po)	MATERIAL	PLATING	QTY PER 14" REEL
BR200-20S	20	.030"	.200"	.500"	.870"	N/A	N/A	.500"	SOLID COPPER	TIN	3,000
BR200-20-EL	20	.030"	.200"	.500"	.830"	.630"	.200"	.500"	SOLID COPPER	TIN	4,000
BR100-22	22	.025"	.100"	.500"	1.020"	N/A	N/A	.500"	SOLID COPPER	TIN	4,000
BR100-22-H	22	.025"	.100"	.500"	1.120"	N/A	N/A	.500"	SOLID COPPER	TIN	4,000
BR100-24	24	.020"	.100"	.500"	1.020"	N/A	N/A	.500"	SOLID COPPER	TIN	4,000
BR200-24-H	24	.020"	.200"	.500"	1.120"	.630"	.490"	.500"	SOLID COPPER	TIN	4,000
BR200-22-EL	22	.025"	.200"	.500"	.830"	.630"	.200"	.500"	SOLID COPPER	TIN	4,000
BR200-22-E	22	.025"	.200"	.500"	1.020"	.630"	.390"	.500"	SOLID COPPER	TIN	4,000
BR200-22-EH	22	.025"	.200"	.500"	1.120"	.630"	.490"	.500"	SOLID COPPER	TIN	4,000
BR200-24-EL	24	.020"	.200"	.500"	0.830"	.630"	.200"	.500"	SOLID COPPER	TIN	4,000
BR200-24-EH	24	.020"	.200"	.500"	1.120"	.630"	.490"	.500"	SOLID COPPER	TIN	4,000



NOTES :

1. All products are RoHS compliant
2. All taping dimensions and tolerances conform to EIA-468B unless otherwise noted
3. All wire meets ASTM-B33 for solderability

Title: Bare Radial Jumper Wire  
Drawing No. VED003  
Rev: C  
Revision Date: 01.02.06  
Approval: WHK

**VESTAL**

Vestal Electronic Devices, LLC  
635 Dickson Street  
Endicott, NY 13760  
Phone: 607-773-8461 ~ Fax: 607-772-8184  
Email: vedsales@vestalelectronics.com