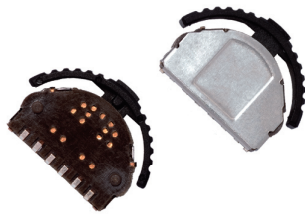


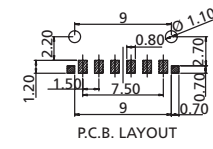
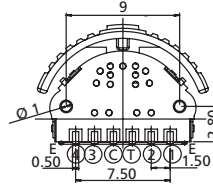
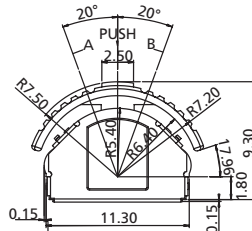
Multi-Direction Switches

Push & Lever Multifunction Switches

MB2 Series



MB2NAN
Standard Actuator,
without Ground Terminals



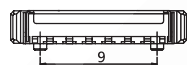
MB2NA with Standard Actuator



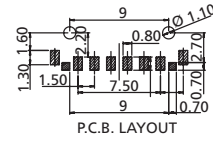
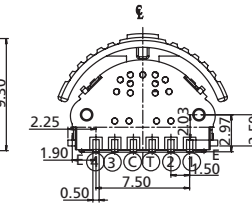
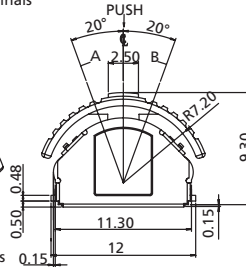
CIRCUIT DIAGRAM OF MB3 SERIES

Angle	A	B	C
20°	(16°)	(8°)	(16°)
Terminal No.	(1)	(2)	(3)
	(4)	(C)	

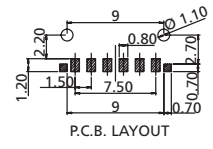
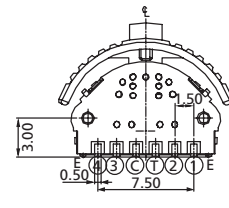
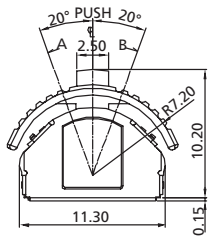
E : Earthing Terminal
z : ON Position



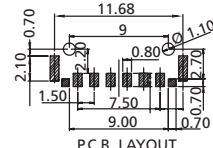
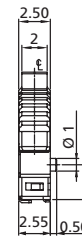
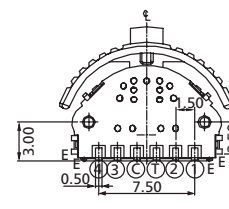
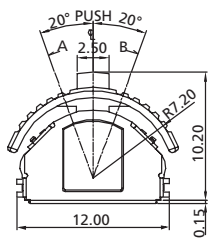
MB2NAG2
Standard Actuator,
with Ground Terminals



MB2HAN
High Actuator,
without Ground Terminals



MB2HAG4
High Actuator,
with Ground Terminals



MB2HA with High Actuator

How to order:

MB2

1 ACTUATOR:

- NA Standard Actuator
- HA High Actuator

2 GROUND TERMINAL:

- N Without Ground Terminal
- G With Ground Terminal

3 NO. OF GROUND PINS (Only for MB2NAG & MB2HAG):

- 2 2 Ground Pins
- 4 4 Ground Pins

4 COLOR OF SWITCH:

- A Black
- H Gray

5 PACKAGE STYLE:

- TR Tape & Reel

General Tolerance: ± 0.2 mm

General Specifications:

FEATURES

- » J Type SMT push & lever switches
- » To provide both momentary operation by lever and center actuation

MATERIALS

- » Contact: Phosphor bronze with silver cladding at contact surface
- » Terminal: Phosphor bronze with silver cladding at contact surface

MECHANICAL

- » Mechanical Life: 100,000 operations cycles
- » Operating Force:
 - (A) Force on return actuator: 40±20 gf
 - (B) Force on center push direction: 150±50 gf
- » Operating Temperature: -10°C to +70°C
- » Storage Temperature: -25°C to +85°C

ELECTRICAL

- » Electrical Life: 100,000 cycles, 5VDC, 10mA
- » Non-Switching Rating: 100mA, 50VDC
- » Switching Rating: 10mA, 5VDC

SOLDERING PROCESSES

- » Reflow Soldering: When applying reflow soldering, the peak temperature or the reflow oven should be set to 260°C max 10 seconds max..

Multi-Direction
Switches