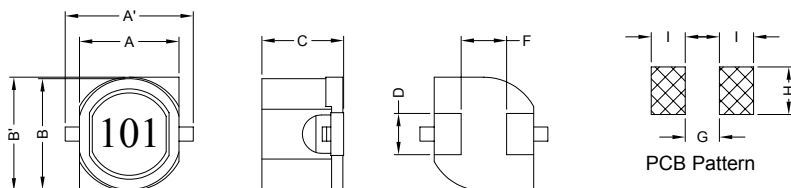


1. PART NO. EXPRESSION :

S	D	B	1	1	0	5	1	0	1	M	Z	F	(a) Series code	(d) Tolerance code : M = ±20%
(a)	(b)	(c)	(d)(e)(f)	(b) Dimension code	(e) X, Y, Z : Standard part									
				(c) Inductance code : 101 = 100uH	(f) F : Lead Free									

2. CONFIGURATION & DIMENSIONS :



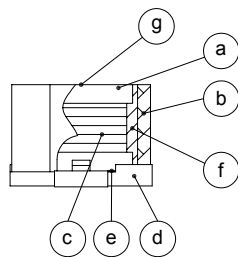
Unit:m/m

A'	A	B'	B	C	D	F	G	H	I
15.0 Max.	11.6 Ref.	12.7±0.3	12.6 Ref.	5.7±0.3	3.0±0.2	8.2±0.3	7.3 Ref.	3.9 Ref.	2.8 Ref.

3. SCHEMATIC :



4. MATERIALS :



- (a) Core : DR Ferrite Core
- (b) Core : RI Ferrite Core
- (c) Wire : Enamelled Copper Wire
- (d) Base : Phenolic
- (e) Adhesive : Epoxy
- (f) Adhesive : Epoxy
- (g) Ink : Bon Margue

5. GENERAL SPECIFICATION :

- a) Temp. rise : 50°C Max.
- b) Rated current : Base on temp. rise $\Delta L/L0A = 10\%$ Typ.
- c) Storage temp. : -40°C to +125°C
- d) Operating temp. : -40°C to +75°C
- e) Resistance to solder heat : 260°C.10 secs



RoHS Compliant

NOTE : Specifications subject to change without notice. Please check our website for latest information.

05.05.2008



SUPERWORLD ELECTRONICS (S) PTE LTD

PG. 1

6. ELECTRICAL CHARACTERISTICS :

Part No.	Inductance (μ H)	Test Freq. (Hz)	RDC (Ω) Max.	IDC (A)
SDB1105100MZF	10 \pm 20%	1V/1K	0.05	2.50
SDB1105120MZF	12 \pm 20%	1V/1K	0.05	2.40
SDB1105150MZF	15 \pm 20%	1V/1K	0.06	2.30
SDB1105180MZF	18 \pm 20%	1V/1K	0.07	2.20
SDB1105220MZF	22 \pm 20%	1V/1K	0.08	2.10
SDB1105270MZF	27 \pm 20%	1V/1K	0.10	2.00
SDB1105330MZF	33 \pm 20%	1V/1K	0.10	1.90
SDB1105390MZF	39 \pm 20%	1V/1K	0.12	1.80
SDB1105470MZF	47 \pm 20%	1V/1K	0.14	1.60
SDB1105560MZF	56 \pm 20%	1V/1K	0.15	1.40
SDB1105680MZF	68 \pm 20%	1V/1K	0.18	1.30
SDB1105820MZF	82 \pm 20%	1V/1K	0.20	1.20
SDB1105101MZF	100 \pm 20%	1V/1K	0.25	1.10
SDB1105121MZF	120 \pm 20%	1V/1K	0.30	0.97
SDB1105151MZF	150 \pm 20%	1V/1K	0.35	0.86
SDB1105181MZF	180 \pm 20%	1V/1K	0.40	0.84
SDB1105221MZF	220 \pm 20%	1V/1K	0.50	0.72
SDB1105271MZF	270 \pm 20%	1V/1K	0.60	0.65
SDB1105331MZF	330 \pm 20%	1V/1K	0.70	0.61
SDB1105391MZF	390 \pm 20%	1V/1K	0.80	0.58
SDB1105471MZF	470 \pm 20%	1V/1K	0.90	0.50
SDB1105561MZF	560 \pm 20%	1V/1K	1.10	0.48
SDB1105681MZF	680 \pm 20%	1V/1K	1.20	0.43
SDB1105821MZF	820 \pm 20%	1V/1K	1.50	0.38
SDB1105102MZF	1000 \pm 20%	1V/1K	2.00	0.35
SDB1105122MZF	1200 \pm 20%	1V/1K	2.20	0.32
SDB1105152MZF	1500 \pm 20%	1V/1K	2.50	0.30



RoHS Compliant

NOTE : Specifications subject to change without notice. Please check our website for latest information.

05.05.2008

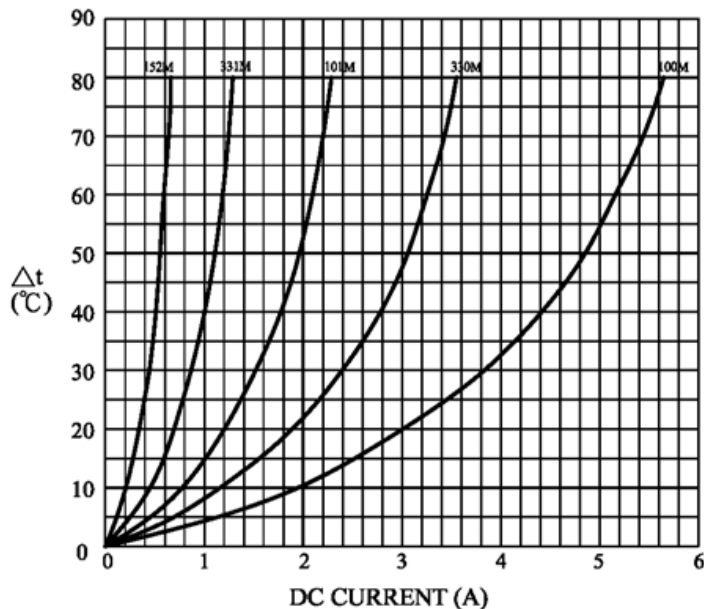


SUPERWORLD ELECTRONICS (S) PTE LTD

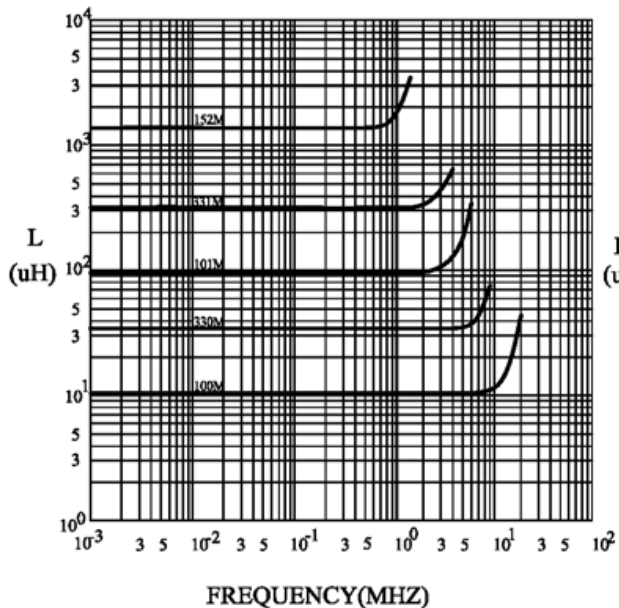
PG. 2

6. ELECTRICAL CHARACTERISTICS :

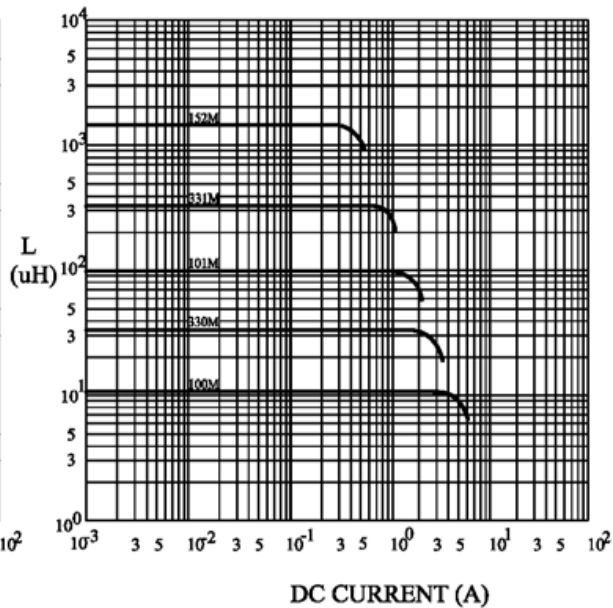
@ TEMP. RISE VS. DC SUPERPOSITION RESPONSE CURVE



@ INDUCTANCE VS. FREQUENCY RESPONSE CURVE



@ INDUCTANCE VS. DC SUPERPOSITION RESPONSE CURVE



RoHS Compliant

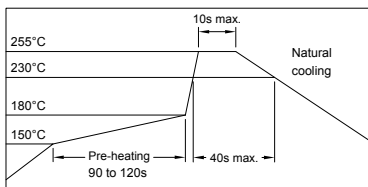
NOTE : Specifications subject to change without notice. Please check our website for latest information.

05.05.2008



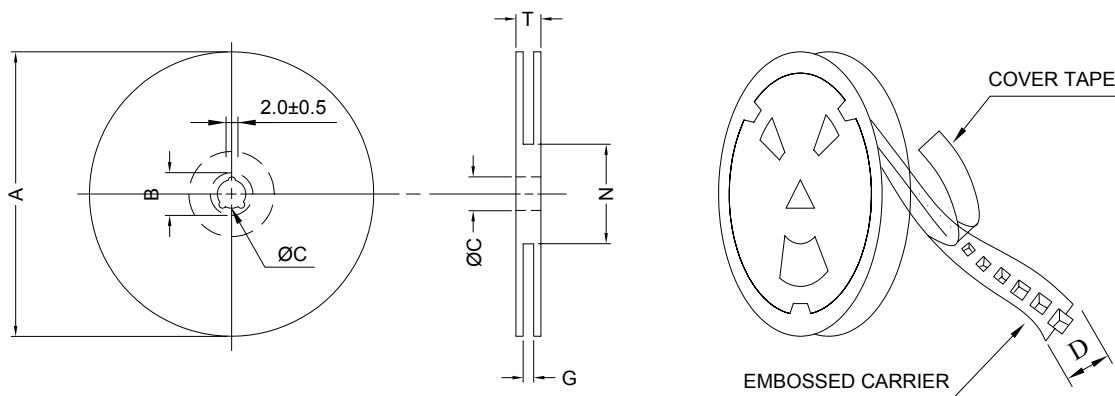
SUPERWORLD ELECTRONICS (S) PTE LTD

RECOMMENDED SOLDERING CONDITIONS REFLOW SOLDERINGS

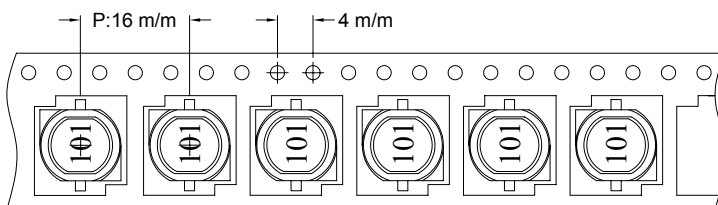


7. PACKAGING INFORMATION :

(1) CONFIGURATION



* CARRIER TAPE WIDTH : D



(2) DIMENSIONS

Unit:m/m

STYLE	A	B	C	D	G	N	T
13-24	330	21±0.8	13	24	26 ⁺⁰	50 ⁻⁰	30.4

(3) Q'TY & G.W. PER PACKAGE

SERIES	INNER : REEL			OUTER : CARTON		
	Q'TY (PCS)	G.W. (gw)	STYLE	Q'TY (PCS)	G.W. (Kg)	SIZE (cm)
SDB1105	500	1500	13-24	2000	9.5	40 x 40 x 24



RoHS Compliant

NOTE : Specifications subject to change without notice. Please check our website for latest information.

05.05.2008



SUPERWORLD ELECTRONICS (S) PTE LTD

PG. 4

8. RELIABILITY AND TEST CONDITION :

TEST ITEM	SPECIFICATION	TEST CONDITION
SOLDERABILITY	MORE THAN 90% OF THE TERMINAL ELECTRODE SHALL BE COVERED WITH FRESH SOLDER.	PREHEAT : 125±25°C FOR 60 SECONDS SOLDER : 99%Sn/0.3%Ag/0.7%Cu OR EQUIVALENT SOLDER TEMP. : 245±5°C FLUX : ROSIN DIP TIME : 4±1 SECONDS
THERMAL SHOCK TEST (TEMP. CYCLE)	INDUCTANCE SHALL NOT CHANGE MORE THAN ±20%	ROOM TEMP. → -25±2°C 15 MINUTES 30 MINUTES
		ROOM TEMP. → 85±2°C 15 MINUTES 30 MINUTES
		TOTAL : 50 CYCLES
HUMIDITY RESISTANCE TEST		TEMPERATURE : 40±2°C HUMIDITY : 90 ~ 95% APPLIED CURRENT : PER SPEC. TIME : 500 HOURS
HIGH TEMP. RESISTANCE TEST		TEMPERATURE : 85±2°C APPLIED CURRENT : PER SPEC. TIME : 500 HOURS



RoHS Compliant

NOTE : Specifications subject to change without notice. Please check our website for latest information.

05.05.2008



SUPERWORLD ELECTRONICS (S) PTE LTD

PG. 5

9. UL CARD :

OBMW2 **November 30, 2000**
Magnet Wire - Component

PACIFIC ELECTRIC WIRE & CABLE (SHENZHEN) CO LTD **E201757**
 607 BAOLONG INDUSTRIAL ESTATE LONGGANG, SHENZHEN
 GUANGDONG CHINA

Mtl Dsg	Coating Type		TC	ANSI Type	TI
UEW/U	BC	Polyurethane	—	—	130
PEW/U		Polyester	—	MW5-C	155°C
PEWH/U		Modified Polyester	—	MW30-C	180
PEW-NY/U		Polyester	Polyamide	MW24-C	155
HAI/U		Polyester(Amide)(Imide)	Polyamideimide	MW35,73	200
UEW-NY/U		Polyurethane	Polyamide	MW80-C	155
				MW28-C	130

Marking: Company name and material designation or marked designation on package or reel, and Recognized Component Mark.

See General Information Preceding These Recognitions

1/3/2001 **Underwriters Laboratories Inc.** **Card 1 of 2**

SUMITOMO CHEMICAL CO LTD **E54705 (M)**
 5-33 KITAHAMA 4-CHOME CHUO-KO, OSAKA JAPAN

Mtl Dsg	Col	Min Thk mm	UL94 Flame Class	Elec	RTI Mech with Imp	w/o Imp	H W I	H A I	H V T R	D 4 5	C T I
Liquid crystal polyester (LCP), designated "EKONOL" or "SUMIKASUPER", furnished in the form of pellets, (Contd)											
E4008 , E400X	NC , BK	0.30	94V-0	130	130	130	—	—	—	—	—
		0.75	94V-0	130	130	130	3	4	—	—	—
		1.5	94V-0	130	130	130	2	4	—	—	—
		3.0	94V-0	130	130	130	1	4	0	5	4
E4008	NC , WT , BK	0.30	94V-0	130	130	130	—	—	—	—	—
		0.75	94V-0	220	180	220	3	4	—	—	—
		1.5	94V-0	220	200	240	2	4	—	—	—
		3.0	94V-0	220	200	240	1	4	0	5	4
E4010	NC , BK	0.30	94V-0	130	130	130	—	—	—	—	—
		0.75	94V-0	220	180	220	3	4	—	—	—
		1.5	94V-0	220	200	240	2	4	—	—	—
		3.0	94V-0	220	200	240	1	4	0	5	4
E400(Y)L , E4008L	NC , BK	0.30	94V-0	130	130	130	—	—	—	—	—
		0.75	94V-0	130	130	130	3	4	—	—	—
		1.5	94V-0	130	130	130	2	4	—	—	—
		3.0	94V-0	130	130	130	1	4	0	5	4
E4810	NC , BK	0.30	94V-0	130	130	130	—	—	—	—	—
		0.75	94V-0	130	130	130	0	4	—	—	—
		1.5	94V-0	130	130	130	0	4	—	—	—
		3.0	94V-0	130	130	130	1	4	0	5	4

(X) Denotes any number 1 thru 9.
 (Y) Denotes any number 1 thru 7.



RoHS Compliant

NOTE : Specifications subject to change without notice. Please check our website for latest information.

05.05.2008

Downloaded from Elcodis.com electronic components distributor