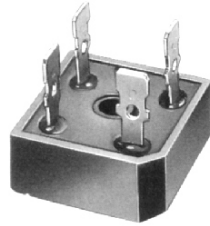


MP50 SERIES

SINGLE-PHASE SILICON BRIDGE



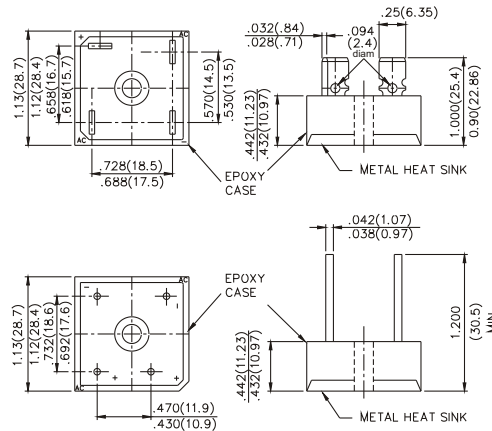
**CHENG-YI
ELECTRONIC**



FEATURES

- Surge overload rating-400 amperese peak
- Low forward voltage drop
- Mounting position:Any
- Electrically isolated base-1800Volts
- Solderable .25" FASTON terminals
- Materials used carries U/L recognized

VOLTAGE RANGE
50 TO 1000 VOLTS PRV
CURRENT
50 Amperes



MAXIMUM RATINGS AND ELECTRICAL CHARACTERISTICS

Rating at 25°C ambient temperature unless otherwise specified.
Resistive or inductive load 60Hz
For capacitive load, derate current by 20%.

		MP 50005	MP 5001	MP 5002	MP 5004	MP 5006	MP 5008	MP 5010	UNITS
Maximum Recurrent Peak Reverse Voltage	V_{RRM}	50	100	200	400	600	800	1000	V
Maximum RMS Bridge Input Voltage	V_{RMS}	35	70	140	280	420	560	700	V
Maximum DC Blocking Voltage	V_{DC}	50	100	200	400	600	800	1000	V
Maximum Average Forward Output Current @ $T_C=55^\circ C$	I_{AV}	50							A
Peak Forward Surge Current 8.3 ms single half sine-wave superimposed on rated load (JEDEC Mehtod)	I_{FSM}	400							A
Maximum DC Forward Voltage per bridge element at 25.0A DC	V_F	1.2							V
Maximum DC Reverse Current at Rated DC Blocking Voltage per bridge element @ $T_A=25^\circ C$ @ $T_A=100^\circ C$	I_R	10 1							μA μA
$I^2 t$ Rating for fusing ($t < 8.3ms$)	$I^2 t$	737							A ² S
Typical Thermal Resistance (Note.1)	$R \theta_{JC}$	2.5							$^\circ C/W$
Operating Temperature Range	T_J	-55 to +125							$^\circ C$
Storage Temperature Range	T_{STG}	-55 to +150							$^\circ C$

MP50 SERIES

SINGLE-PHASE SILICON BRIDGE



RATING AND CHARACTERISTICS CURVES
MP50 SERIES

