

# N-CHANNEL POWER MOSFET

## LMBF170LT1

### FEATURE

- Pb-Free Package is available.

### DEVICE MARKING AND ORDERING INFORMATION

Device	Marking	Shipping
LMBF170LT1	6Z	3000/Tape&Reel
LMBF170LT1G	6Z (Pb-Free)	3000/Tape&Reel
LMBF170LT3	6Z	10000/Tape&Reel
LMBF170LT3G	6Z (Pb-Free)	10000/Tape&Reel

### MAXIMUM RATINGS

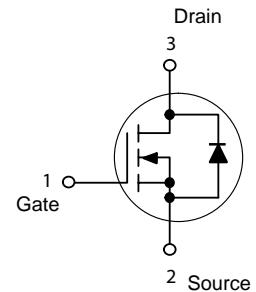
Rating	Symbol	Value	Unit
Drain-Source Voltage	$V_{DSS}$	60	Vdc
Drain-Gate Voltage	$V_{DGS}$	60	Vdc
Gate-Source Voltage	$V_{GS}$	$\pm 20$	Vdc
– Continuous	$V_{GSM}$	$\pm 40$	Vpk
– Non-repetitive ( $t_p \leq 50 \mu s$ )			
Drain Current – Continuous	$I_D$	0.5	A dc
– Pulsed	$I_{DM}$	0.8	

### THERMAL CHARACTERISTICS

Characteristic	Symbol	Max	Unit
Total Device Dissipation FR-5 Board (Note 1.) $T_A = 25^\circ C$ Derate above $25^\circ C$	$P_D$	225 1.8	mW mW/ $^\circ C$
Thermal Resistance, Junction to Ambient	$R_{\theta JA}$	556	$^\circ C/W$
Junction and Storage Temperature	$T_J, T_{stg}$	-55 to +150	$^\circ C$

1. FR-5 =  $1.0 \times 0.75 \times 0.062$  in.

### LMBF170LT1



**LMBF170LT1**

**ELECTRICAL CHARACTERISTICS** ( $T_a = 25^\circ\text{C}$  unless otherwise noted)

Characteristic	Symbol	Min	Max	Unit
----------------	--------	-----	-----	------

**OFF CHARACTERISTICS**

Drain–Source Breakdown Voltage ( $V_{GS} = 0, I_D = 100 \mu\text{A}$ )	$V_{(BR)DSS}$	60	–	Vdc
Gate–Body Leakage Current, Forward ( $V_{GSF} = 15 \text{ Vdc}, V_{DS} = 0$ )	$I_{GSS}$	–	10	nAdc

**ON CHARACTERISTICS** (Note 2.)

Gate Threshold Voltage ( $V_{DS} = V_{GS}, I_D = 1.0 \text{ mA}$ )	$V_{GS(th)}$	0.8	3.0	Vdc
Static Drain–Source On–Resistance ( $V_{GS} = 10 \text{ Vdc}, I_D = 200 \text{ mA}$ )	$r_{DS(on)}$	–	5.0	$\Omega$
On–State Drain Current ( $V_{DS} = 25 \text{ Vdc}, V_{GS} = 0$ )	$I_{D(off)}$	–	0.5	$\mu\text{A}$

**DYNAMIC CHARACTERISTICS**

Input Capacitance ( $V_{DS} = 10 \text{ Vdc}, V_{GS} = 0 \text{ V}, f = 1.0 \text{ MHz}$ )	$C_{iss}$	–	60	pF
---	-----------	---	----	----

**SWITCHING CHARACTERISTICS** (Note 2.)

Turn–On Delay Time	( $V_{DD} = 25 \text{ Vdc}, I_D = 500 \text{ mA}, R_{gen} = 50 \Omega$ ) Figure 1	$t_{d(on)}$	–	10	ns
Turn–Off Delay Time		$t_{d(off)}$	–	10	

2. Pulse Test: Pulse Width  $\leq 300 \mu\text{s}$ , Duty Cycle  $\leq 2.0\%$ .

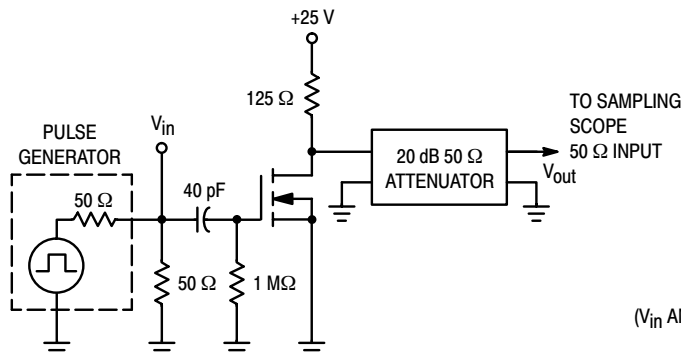


Figure 1. Switching Test Circuit

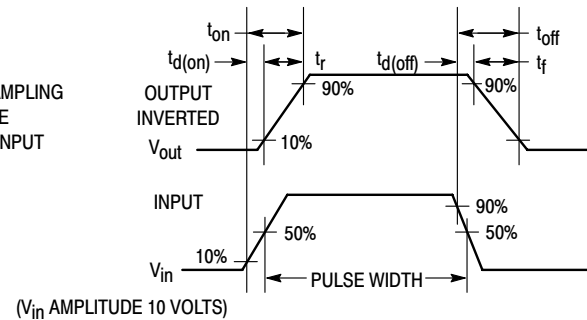


Figure 2. Switching Waveform

TYPICAL ELECTRICAL CHARACTERISTICS

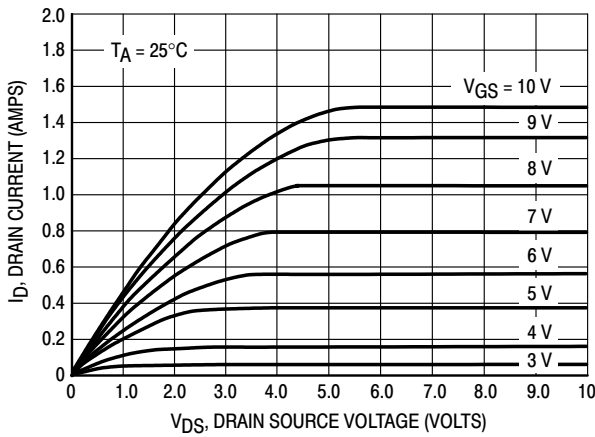


Figure 3. Ohmic Region

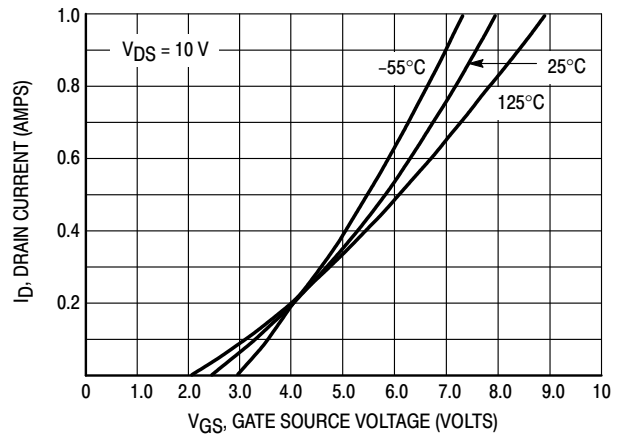


Figure 4. Transfer Characteristics

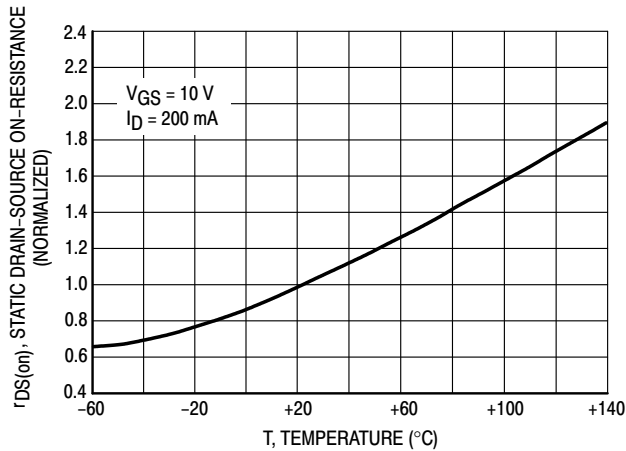


Figure 5. Temperature versus Static Drain-Source On-Resistance

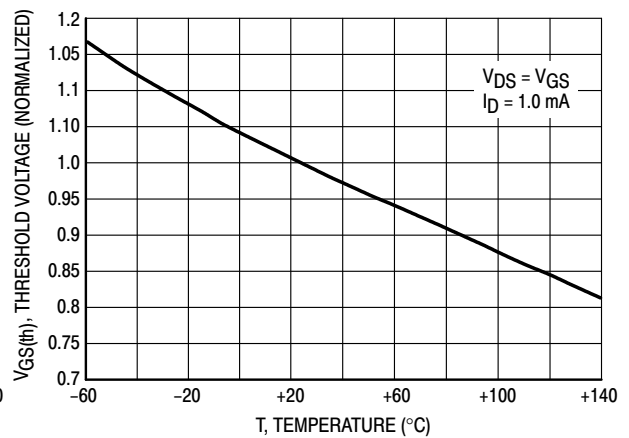
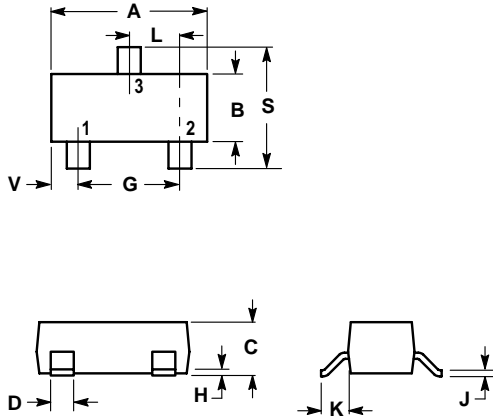


Figure 6. Temperature versus Gate Threshold Voltage

**LMBF170LT1**

**SOT-23**



NOTES:

1. DIMENSIONING AND TOLERANCING PER ANSI Y14.5M, 1982.
2. CONTROLLING DIMENSION: INCH.

DIM	INCHES		MILLIMETERS	
	MIN	MAX	MIN	MAX
A	0.1102	0.1197	2.80	3.04
B	0.0472	0.0551	1.20	1.40
C	0.0350	0.0440	0.89	1.11
D	0.0150	0.0200	0.37	0.50
G	0.0701	0.0807	1.78	2.04
H	0.0005	0.0040	0.013	0.100
J	0.0034	0.0070	0.085	0.177
K	0.0140	0.0285	0.35	0.69
L	0.0350	0.0401	0.89	1.02
S	0.0830	0.1039	2.10	2.64
V	0.0177	0.0236	0.45	0.60

- PIN 1. Gate  
 2. Source  
 3. Drain

