

Specifications

Insulation Resistance: 5,000MΩ min.
 Withstanding Voltage: 1,000V AC
 Contact Resistance: 10mΩ max.
 Current Rating: 5A
 Operating Temp. Range: -55°C to +105°C
 Soldering Temp.: 230°C / 3 sec.

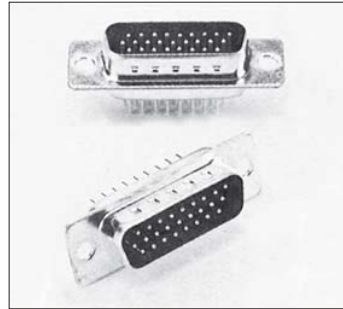
Materials and Finish

Insulator: Polyester Resin
 and Glass Fiber reinforced (UL94V-0)
 Contacts: Copper Alloy
 Plating: Gold over Nickel



Features

- ⇨ Stamped contacts
- ⇨ Full gold plating
- ⇨ Alternative:
Selective gold plating



Part Numbers (please note)

CT**-*P1 (Au-plated)
 CT**-*P1-K45 (selective Au)

15 Contacts Part No. CT09-15P1 (-K45)



26 Contacts Part No. CT15-26P1 (-K45)



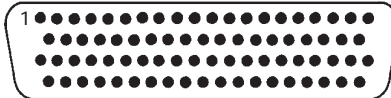
44 Contacts Part No. CT25-44P1 (-K45)



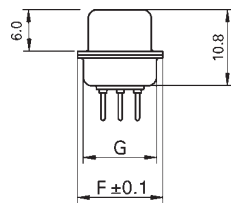
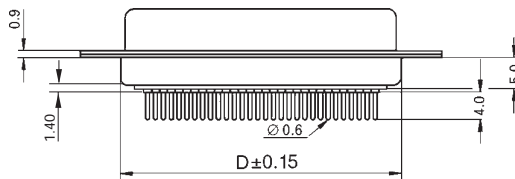
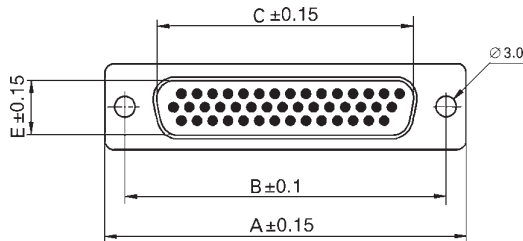
62 Contacts Part No. CT37-62P1 (-K45)



78 Contacts Part No. CT50-78P1 (-K45)



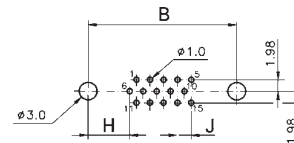
Outline Connector Dimensions



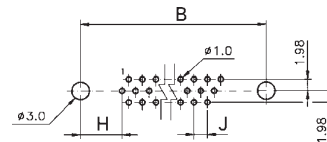
Recommended PCB Layouts

For 15 contacts

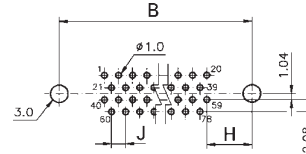
Top View



For 26, 44 and 62 contacts



For 78 contacts



Part Number	No. of Contacts	A	B	C	D	E	F	G	H	J
CT09-15P1-*	15	30.80	25.00	16.90	19.20	8.30	12.50	10.70	7.10	2.29
CT15-26P1-*	26	39.20	33.30	25.25	27.70	8.30	12.50	10.70	6.80	2.29
CT25-44P1-*	44	53.05	47.05	38.95	41.10	8.30	12.50	10.70	7.00	2.29
CT37-62P1-*	62	69.40	63.50	55.40	57.30	8.30	12.50	10.70	7.00	2.42
CT50-78P1-*	78	67.00	61.00	52.80	55.10	11.30	15.30	13.60	7.60	2.42

Specifications

Insulation Resistance: 5,000MΩ min.
 Withstanding Voltage: 1,000V AC
 Contact Resistance: 10mΩ max.
 Current Rating: 5A
 Operating Temp. Range: -55°C to +105°C
 Soldering Temp.: 230°C / 3 sec.

Materials and Finish

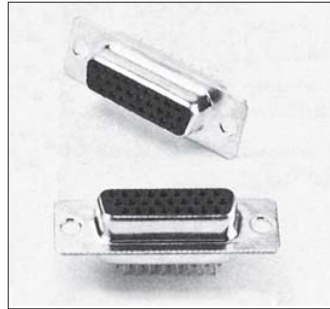
Insulator: Polyester Resin and
 Glass Fiber reinforced (UL94V-0)

Contacts: Copper Alloy
 Plating: Gold over Nickel



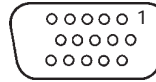
Features

- ⇨ Stamped contacts
- ⇨ Selective gold plating

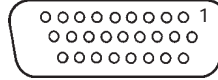


Part Numbers

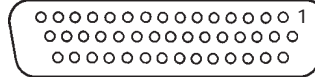
15 Contacts Part No. CT09-15S1



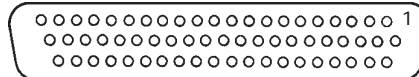
26 Contacts Part No. CT15-26S1



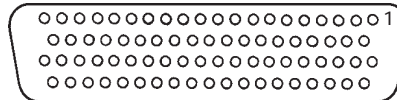
44 Contacts Part No. CT25-44S1



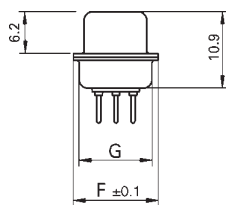
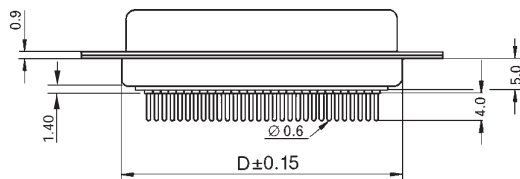
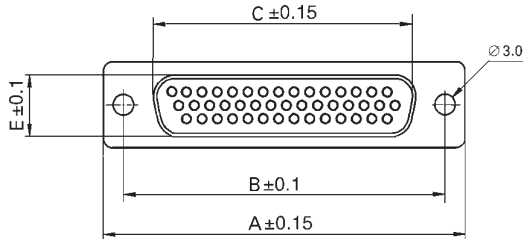
62 Contacts Part No. CT37-62S1



78 Contacts Part No. CT50-78S1

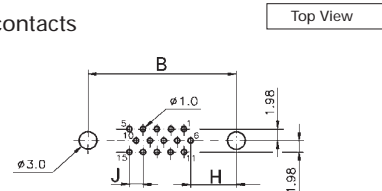


Outline Connector Dimensions

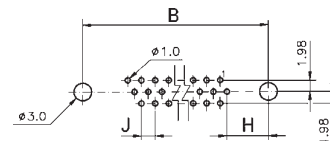


Recommended PCB Layouts

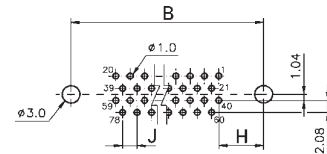
For 15 contacts



For 26, 44 and 62 contacts



For 78 contacts



Part Number	No. of Contacts	A	B	C	D	E	F	G	H	J
CT09-15S1	15	30.80	25.00	16.35	19.20	7.90	12.50	10.70	7.10	2.29
CT15-26S1	26	39.20	33.30	24.70	27.70	7.90	12.50	10.70	6.80	2.29
CT25-44S1	44	53.05	47.05	38.40	41.10	7.90	12.50	10.70	7.00	2.29
CT37-62S1	62	69.40	63.50	54.80	57.30	7.90	12.50	10.70	7.00	2.42
CT50-78S1	78	67.00	61.00	52.20	55.10	10.90	15.30	13.60	7.60	2.42