

# SMD POWER INDUCTOR



## P10DR75 SERIES

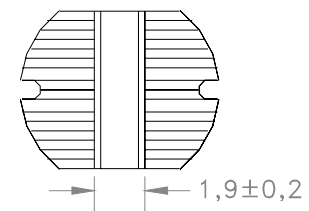
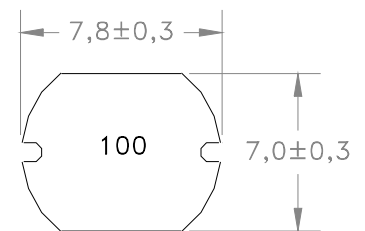


- RoHS Compliant Product
- Inductance measured :  $< 100\mu\text{H}$  : 100KHz,  $0.25V_{\text{RMS}}$
- Inductance measured :  $\geq 100\mu\text{H}$  : 1KHz,  $0.25V_{\text{RMS}}$
- Inductance Tolerance: J= $\pm 5\%$ , K= $\pm 10\%$ , L= $15\pm\%$ , M= $\pm 20\%$   
Add suffix letter for tolerance after the part number
- $I_{\text{RATED}}$ : Max 10% inductance drop and  $\Delta T=40^\circ\text{C}$  Temp Rise
- Operating Temperature:  $-40^\circ\text{C}$  to  $+85^\circ\text{C}$

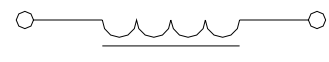
## ELECTRICAL SPECIFICATION @ 25°C

PART NO	L $\pm 20\%$ ( $\mu\text{H}$ )	DCR Max ( $\text{m}\Omega$ )	RATED $I_{\text{DC}}$ (A)
P10DR75-			
1R0	1	12	8.00
2R2	2.2	15	5.52
3R3	3.3	25	4.50
4R7	4.7	30	3.30
5R6	5.6	35	2.80
6R8	6.8	40	2.50
8R2	8.2	50	2.40
	$\pm 10\%$		
100	10	70	2.30
120	12	80	2.00
150	15	90	1.80
180	18	100	1.60
220	22	110	1.50
270	27	120	1.30
330	33	130	1.20
390	39	160	1.10
470	47	180	1.10
560	56	240	0.94
680	68	280	0.85
820	82	370	0.78
101	100	430	0.72
121	120	470	0.66
151	150	640	0.58
181	180	710	0.51
221	220	960	0.49
271	270	1110	0.42
331	330	1260	0.40
391	390	1770	0.36
471	470	1960	0.34
561	560	2200	0.32
681	680	2600	0.30
821	820	2800	0.28
102	1000	3600	0.23

## Mechanical



## Schematic



### Dimensions

Unless otherwise specified, all tolerances are:  
 inch: .XX :  $\pm 0.015$  .XXX :  $\pm 0.004$   
 mm: X,X :  $\pm 0,38$  X,XX :  $\pm 0,10$

P10DR75-XX  
0602JW

Product performance is limited to specified parameter. Data is subject to change without prior notice.

2463 208th, Ste. 205  
Torrance, CA 90501

Phone: (310)533-1455  
Fax: (310)533-1853

<http://www.mpsind.com>  
Email: [sales@mpsind.com](mailto:sales@mpsind.com)