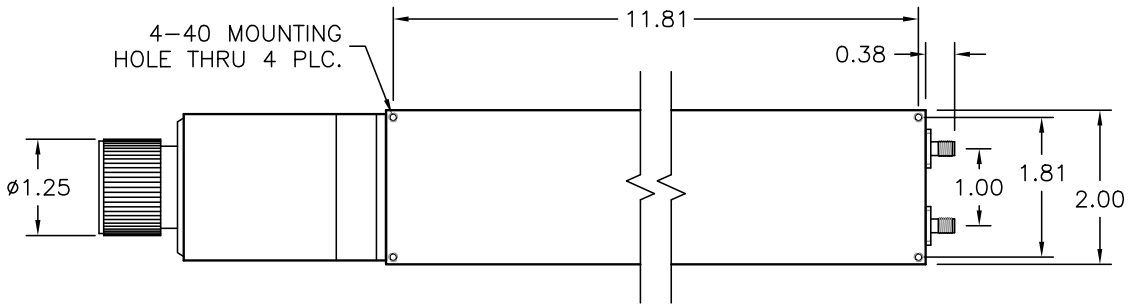
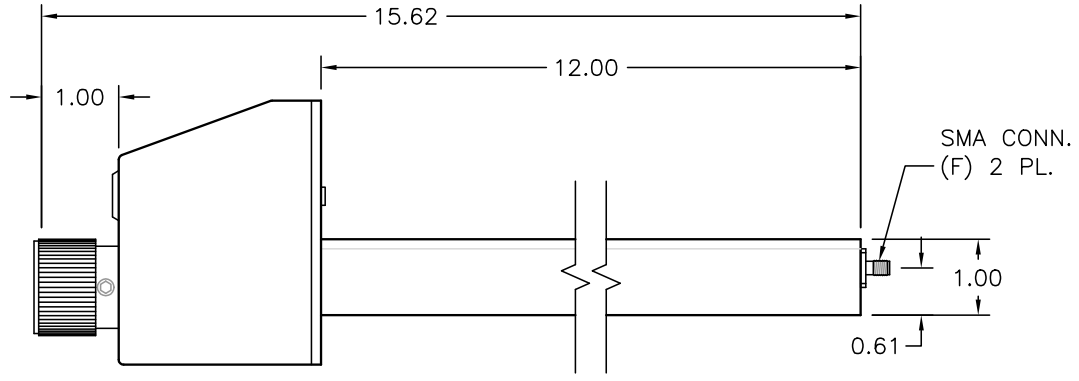
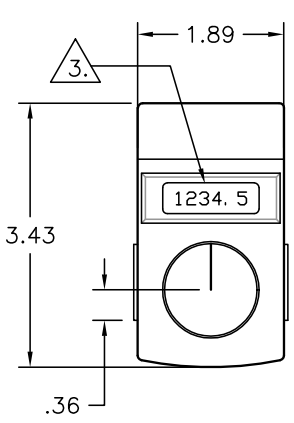


REV.	DATE	INITIAL
A	MM/DD/YY	RELEASE



**NOTES:**

1. ALL MODELS HAVE AN RF POWER RATING OF 100W AVERAGE & 3 KW PEAK.
2. DISPLAY UNIT HAS A 5-DIGIT LCD SCREEN WITH A BATTERY LIFE OF APPROX. 6 YEARS.
3. STANDARD MODEL SET AT 1 GHz, OTHER FREQ. AVAILABLE BY REQUEST.

MATERIAL	TREATMENT	DRAWN	R. LYNCH	DATE	7/13/01
FINISH	ATM STD. GRAY	MOD NO.	P12DRXX	CHECKED	DATE
<b>12.00" PHASESHIFTER OUTLINE - DIRECT READING DIAL</b>				APPROVED	DATE
ADVANCED TECHNICAL MATERIALS, INC. 49 RIDER AVE., PATCHOGUE N.Y. 11772 TEL: (631) 289-0386 FAX: (631) 289-0358 http://www.atmmicrowave.com		UNLESS OTHERWISE NOTED DIMENSIONS ARE IN INCHES TOLERANCES ARE:	FRACTIONS ±1/64 DECIMALS ±.01 ANGLES ±1/2°	SHEET. 1/1	REV. A
		PROPRIETARY NOTICE: THE INFORMATION IN THIS DRAWING IS PROPRIETARY AND SHALL NOT BE USED OR DISCLOSED WITHOUT THE PRIOR WRITTEN CONSENT OF ATM, INC.	SCALE 1 : 2	DWG. NO. 4441W	REV. A