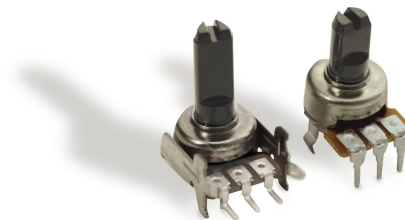


Model P120
12mm Rotary Potentiometer
Single/Dual Unit
Conductive Plastic Element
100,000 Cycle Life
Insulated shaft
RoHS Compliant



MODEL STYLES

Side Adjust, PCB pins, Single unit	P120K
Top Adjust, PCB pins, Single unit	P120PK
Top Adjust, PCB pins, Dual unit	P120KGP
Side Adjust, PCB pins, Dual unit	P120KGE

ELECTRICAL¹

Resistance Range, Ohms	1K- 1M
Standard Resistance Tolerance	± 20%
Residual Resistance	20 ohms max.
Input Voltage, maximum	50 Vac max.
Power rating, Watts	0.05w
Dielectric Strength	300Vac, 1 minute
Insulation Resistance, Minimum	100M ohms at 250Vdc
Sliding Noise	100mV max.
Gang Error (Multi-ganged)	-40dB – 0dB, ±3dB
Actual Electrical Travel, Nominal	270°

MECHANICAL

Total Mechanical Travel	300°± 10°
Static Stop Strength	50 oz-in
Rotational Torque, Maximum	2.5 oz-in

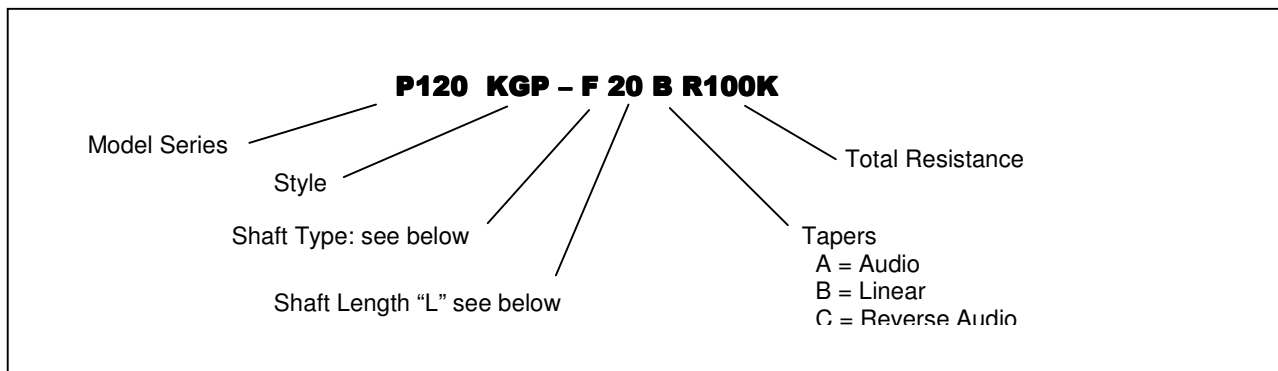
ENVIRONMENTAL

Operating Temperature Range	-20°C to +70°C
Rotational Life	100,000 cycles

¹ Specifications subject to change without notice.

Model P120

ORDERING INFORMATION²



Shaft Types

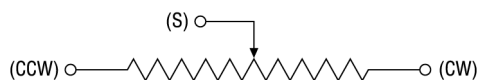
	F-TYPE								Y-TYPE							T-TYPE					
TOP ADJUST	L	15	17	20	25	30	35	40	L	15	20	25	30	35	40	L	15	20	25	30	35
	T	5	7	7	12	12	12	12	T	5	8	12	12	12	12	T	5	7	7	12	12
SIDE ADJUST	L	10	15	20	25	30	L	10	15	20	25	30	L	10	15	20	25	30			
	T	5	8	12	12	12	T	5	8	12	12	12	T	5	7	7	12	12			

STANDARD RESISTANCE VALUES, OHMS

1K 2K 5K 10K 20K 50K 100K 200K 500K 1MEG

CIRCUIT DIAGRAM

Unless otherwise specified

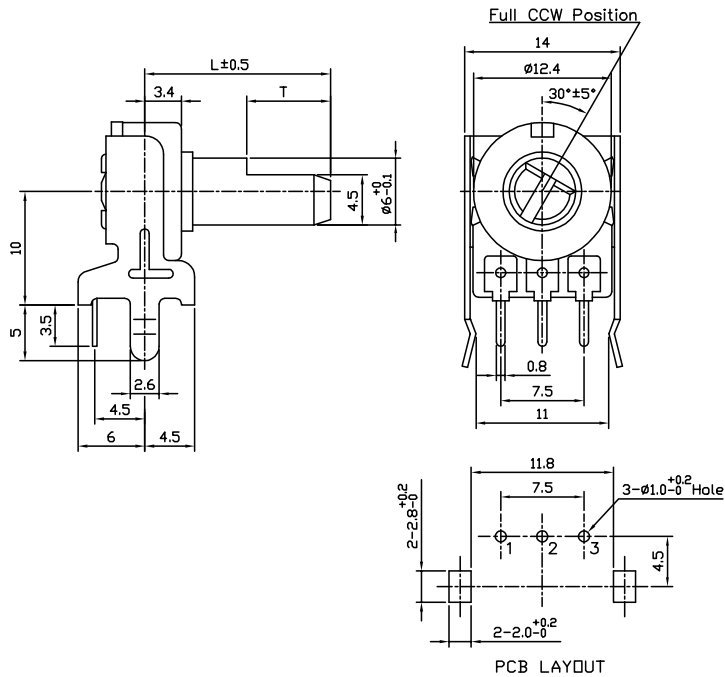


² Contact our customer service for custom designs and features.

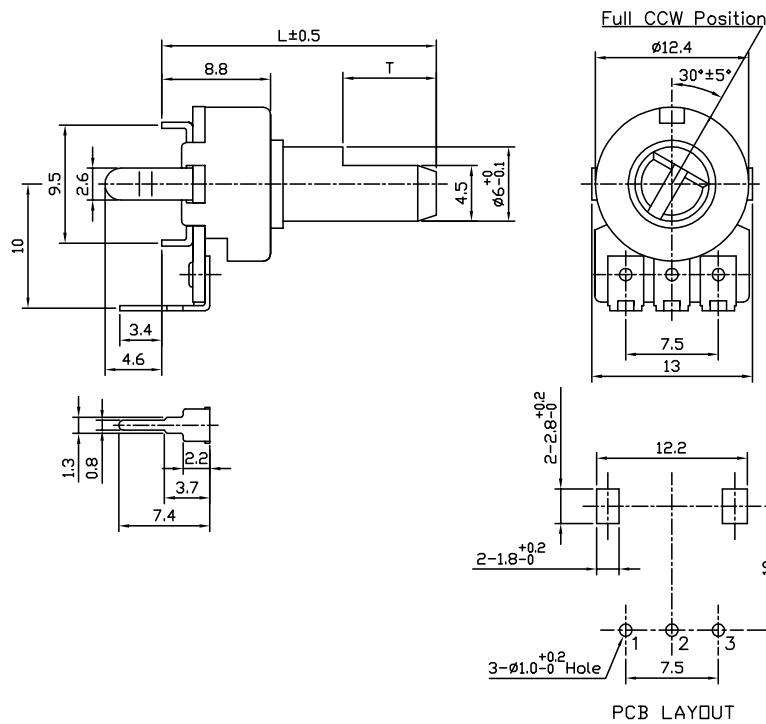
Model P120

OUTLINE DRAWING

Model P120K (Side Adjust, PCB pins, Single unit)

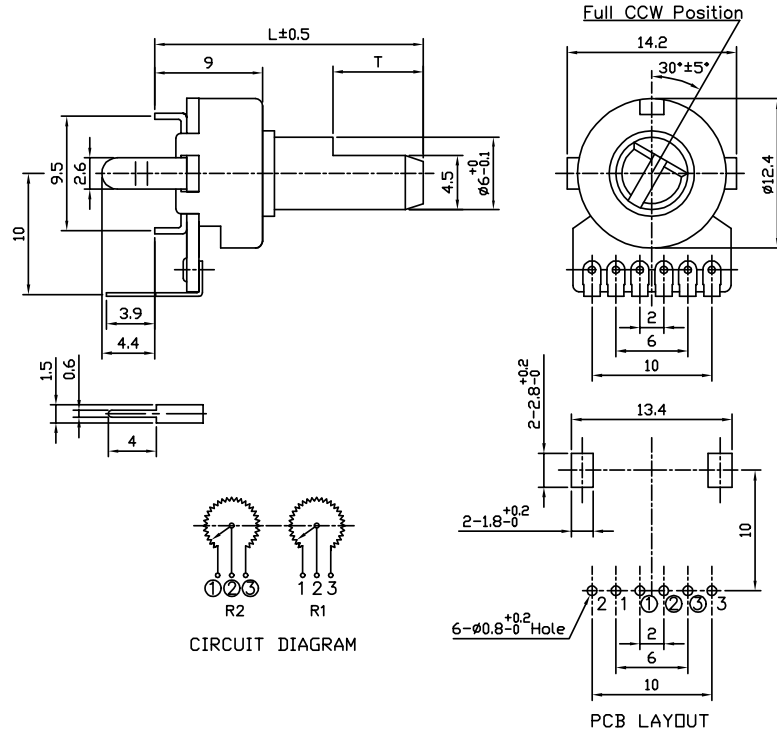


Model P120PK (Top Adjust, PCB pins, Single unit)

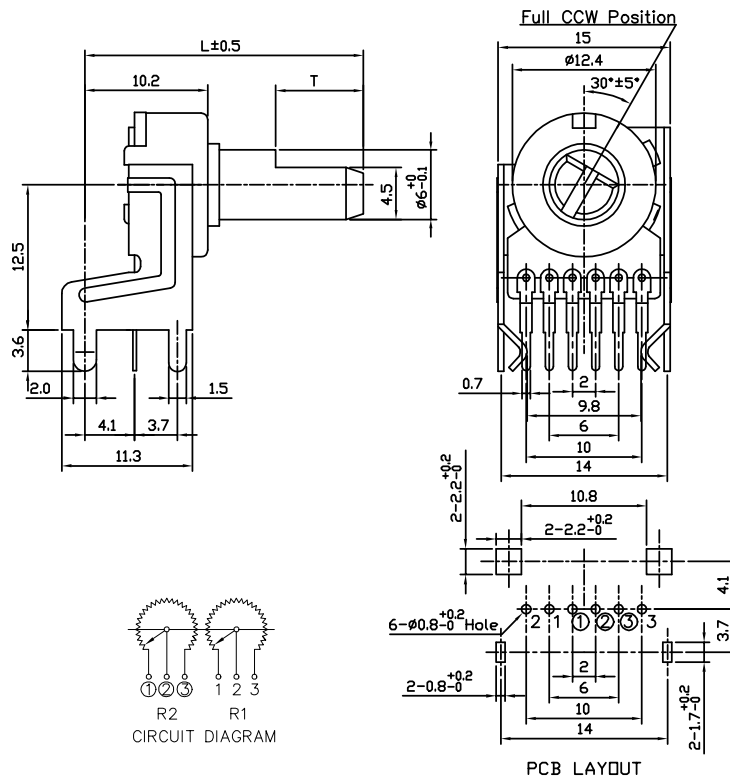


Model P120

Model P120KGP (Top Adjust, PCB pins, Dual unit)



Model P120KGE (Side Adjust, PCB pins, Dual unit)



BI Technologies Corporation
 4200 Bonita Place, Fullerton, CA 92835 USA
 Phone: 714 447 2345 Website: www.bitechnologies.com



February 16, 2007

page 4 of 4

Unless otherwise Specified

Downloaded from Elcodis.com electronic components distributor