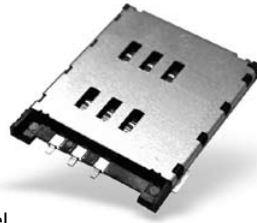


Specifications

Insulation Resistance:	500M Ω min. at 500V DC
Withstanding Voltage:	250V ACrms for 1 minute
Contact Resistance:	100m Ω max. at 1mA / 20mV max.
Current Rating:	0.5A
Voltage Rating:	5.0Vrms
Operating Temp. Range:	-25°C to +85°C
Mating Cycles:	5,000 insertions

Materials and Finish

Insulator:	LCP, glass filled (UL94V-0)
Contact Plating:	Mating Face - Gold over Nickel Solder Tails - Gold over Nickel



Part Number (Details)

FMS006 - 5000 - 0

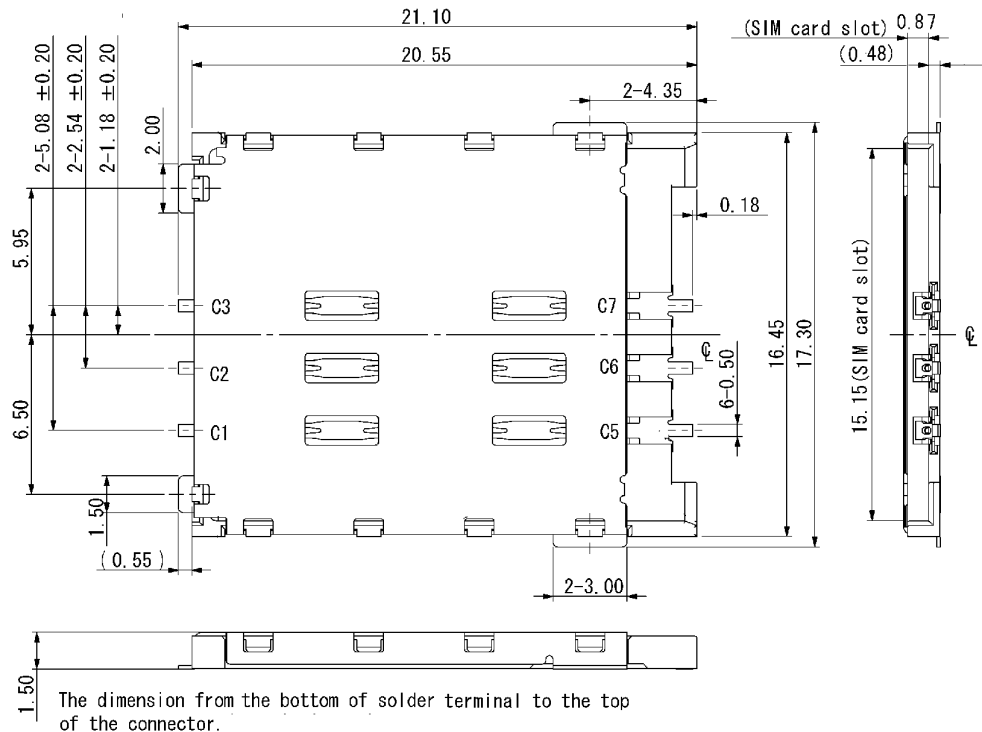
Series No.

Design No.

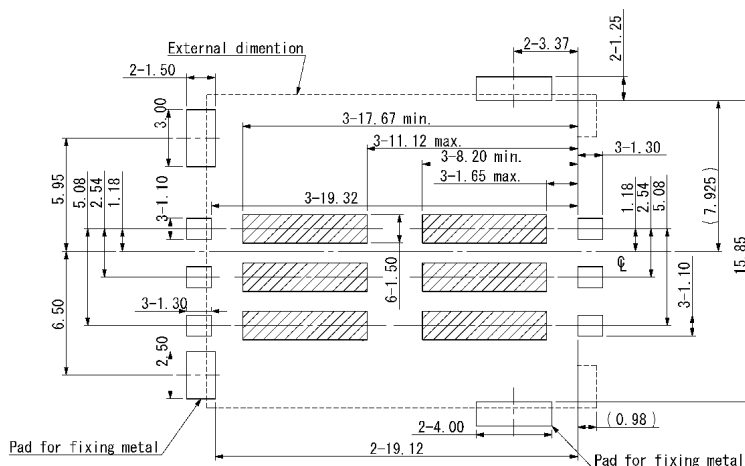
Features

- Super low profile with 1.5mm height
- Without switch
- Conforms to GSM11.11 standard for the European mobile phone system
- Tape and Reel Packaging (1,000 pcs./reel)

Outline Connector Dimensions



Recommended PCB Layout (Mounting Side)



Card Insertion

