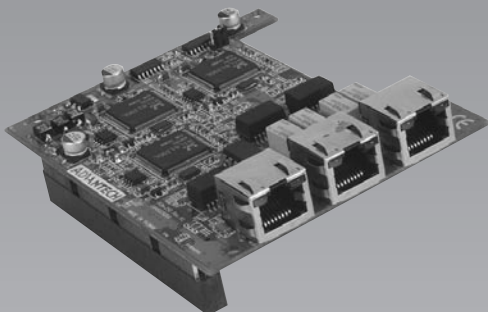


# Module I/O Series



## MIO-6250: 3 Fast Ethernet Ports



## MIO-6250

### 3 x 10/100 Mbps with Bypass Ethernet Ports

#### Features

- 3 x 10/100 Mbps Fast Ethernet
- Bypass in Port 2 and Port 3
- MIO (Module I/O) Interface

#### Specifications

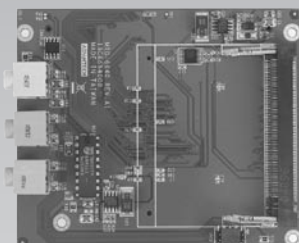
- Chipset** 3 x RealTek® RTL8139
- Speed** 10/100 Mbps
- Interface** 3 x RJ45
- Standard** IEEE 802.3 u (100Base-T) Compatible
- Bypass** Ethernet Bypass in Port 2 and Port 3
- Dimension** 102 x 85 mm, (4.7" x 3.3")
- Environment** 0 ~ 60° C, operation
- Operating Humidity** 0% ~ 90% relative humidity, non-condensing

#### Ordering Information

- MIO-6250-00A1E

MIO base board: **PCM-9380, PCM-9386, PCM-9382**

## MIO-6251: 1 Mini PCI, Audio, MDC



## MIO-6251

### MIO module with 1 slot Mini PCI, Audio MDC

#### Features

- 1-slot Mini PCI device
- 1 x Audio (by cable)
- 1 x MDC (Mobile Daughter Card) interface (Optional)

#### Specifications

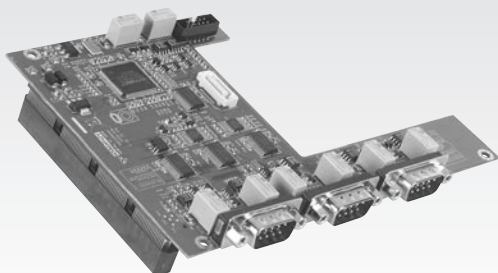
- 1-slot Mini PCI**
- Data Bus** 32-bit data bus (compliant with PCI Bus Specification 2.1)
- PCI Interface** 3.3 V interface (5 V tolerant)
- Mini PCI slot** 1 Mini PCI type III A slot
- Audio** Supports AC97 Audio stereo sound (by cable with MIO base board)  
Audio Cable P/N# 1700002102  
Audio Output Speaker-Out, Line-In, Mic-In
- MDC (Mobile Daughter Card) Interface** Optional
- Dimension** 102 x 85 mm, (4.7" x 3.3")
- Environment** 0 ~ 60° C, operation
- Operating Humidity** 10% ~ 90% relative humidity, non-condensing

#### Ordering Information

- MIO-6251-00A1E

MIO base board: **PCM-9380, PCM-9386, PCM-9382**

## MIO-6253: 4 COMs



## MIO-6253

### 4 COMs MIO Module

#### Features

- 3 x serial ports supports RS-232/422/485 by BIOS
- MIO (Module I/O) Interface

#### Specifications

- Chipset** SMSC SCH-3114 LPC I/O with Multiple Serial Ports Controller
- Serial Port** 3 x D-Sub connector serial RS-232/422/485 Ports and 1 x box header (share with internal M2M port for wireless)
- Dimension** 102 x 146 mm, (4.7" x 5.7")
- Environment** 0 ~ 60° C, operation
- Operating Humidity** 0% ~ 90% relative humidity, non-condensing

#### Ordering Information

- MIO-6253-00A1E

MIO base board: **PCM-9380, PCM-9386, PCM-9382**