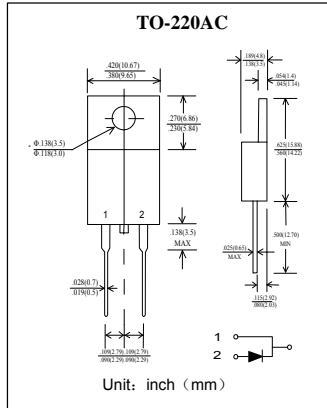


塑封超快速整流二极管
反向电压 100---600V
正向电流 10A

Plastic Ultra-Fast Recover Rectifier
Reverse Voltage 100 to 600 V
Forward Current 10 A



特征 Features

- 大电流承受能力。High Current Capability
- 正向压降低。Low Forward Voltage Drop
- 低功耗高效率。Low Power Loss, High Efficiency
- 引线 and 管体皆符合RoHS标准。
Lead and body according with RoHS standard

机械数据 Mechanical Data

- 封装: 塑料封装 Case: Molded Plastic
- 极性: 标记模压或印于本体 Polarity: Symbols molded or marked on body
- 安装位置: 任意 Mounting Position: Any
- 安装扭矩: 推荐值 0.3牛*米 Mounting torque: Recommend 0.3 N*m

极限值和温度特性 TA = 25℃ 除非另有规定。

Maximum Ratings & Thermal Characteristics Ratings at 25℃ ambient temperature unless otherwise specified.

	符号 Symbols	MUR1010	MUR1020	MUR1040	MUR1060	单位 Unit
最大可重复峰值反向电压 Maximum repetitive peak reverse voltage	V_{RRM}	100	200	400	600	V
最大均方根电压 Maximum RMS voltage	V_{RMS}	70	140	280	420	V
最大直流阻断电压 Maximum DC blocking voltage	V_{DC}	100	200	400	600	V
最大正向平均整流电流 Maximum average forward rectified current	$I_{F(AV)}$	10				A
峰值正向浪涌电流 8.3ms单一正弦半波 Peak forward surge current 8.3 ms single half sine-wave	I_{FSM}	100				A
典型热阻 Typical thermal resistance	$R_{\theta JC}$	3.0		2.0		℃/W
工作结温和存储温度 Operating junction and storage temperature range	T_j, T_{STG}	-55---+150				℃

电特性 TA = 25℃ 除非另有规定。

Electrical Characteristics Ratings at 25℃ ambient temperature unless otherwise specified.

	符号 Symbols	MUR1010	MUR1020	MUR1040	MUR1060	单位 Unit
最大正向电压 Maximum forward voltage	$I_F = 10A$ V_F	1.00		1.30	1.50	V
最大反向电流 Maximum reverse current	TA= 25℃ TA=125℃ I_R	10 250				μA
最大反向恢复时间 MAX. Reverse Recovery Time	$I_F=0.5A$ $I_R=1.0A$ $I_{REC}=0.25A$ trr	35		50		nS

特性曲线 Characteristic Curves

