

PLEASE CHECK WWW.MOLEX.COM FOR LATEST PART INFORMATION

Part Number: [0039000340](#)
Status: **Active**
Overview: [standard_062](#)
Description: 1.57mm (.062") Diameter, Standard .062" Pin and Socket Crimp Terminal, 3.68mm (.145") Pitch, Female, Gold (Au) Plated Brass Contact, 22-28 AWG,Reel

Documents:

[Drawing \(PDF\)](#) [RoHS Certificate of Compliance \(PDF\)](#)
[Product Specification PS-1855-001 \(PDF\)](#)

General

Product Family Crimp Terminals
 Series [1855](#)
 Crimp Quality Equipment Yes
 Overview [standard_062](#)
 Product Name Standard .062"

Physical

Gender Female
 Material - Metal Brass
 Material - Plating Mating Gold
 Material - Plating Termination Gold
 Packaging Type Reel
 Plating min: Mating (µin) 14
 Plating min: Mating (µm) 0.35
 Plating min: Termination (µin) 14
 Plating min: Termination (µm) 0.35
 Termination Interface: Style Crimp or Compression
 Wire Insulation Diameter 1.10-1.50mm (.043-.059")
 Wire Size AWG 22, 24, 26, 28
 Wire Size mm² N/A

Electrical

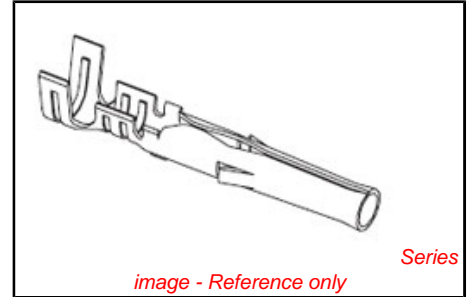
Current - Maximum per Contact 3A
 Voltage - Maximum 250V

Material Info

Old Part Number 1855G

Reference - Drawing Numbers

Product Specification PS-1855-001
 Sales Drawing SD-1855*



EU RoHS

ELV and RoHS Compliant
REACH SVHC Contains SVHC: No
Halogen-Free Status Not Reviewed

China RoHS



Need more information on product environmental compliance?

Email productcompliance@molex.com
 For a multiple part number RoHS Certificate of Compliance, [click here](#)

Please visit the [Contact Us](#) section for any non-product compliance questions.

Search Parts in this Series

[1855Series](#)

Use With

[1625nr](#) Receptacle Housing, [1625np](#) Plug Housing

Application Tooling | FAQ

Tooling specifications and manuals are found by selecting the products below. Crimp Height Specifications are then contained in the Application Tooling Specification document.

Global

Description	Product #
Mini-Mac™ Applicator	0638914000
Hand Crimp Tool	0638190800
Manual Extraction Tool	0011030002

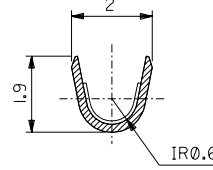
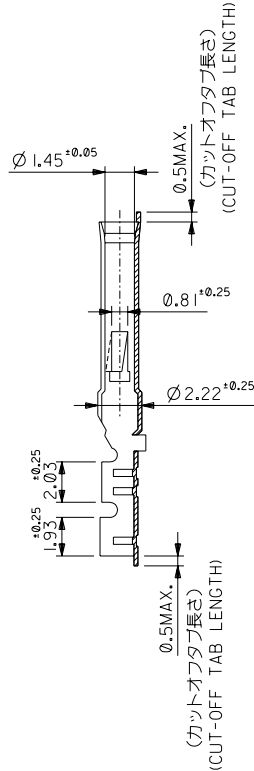
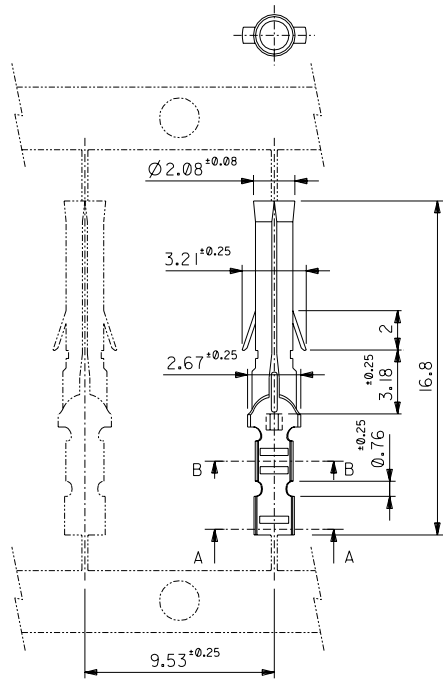
Japan

Description	Product #
Applicator for M211A Bench Press, 18-28	0011260072

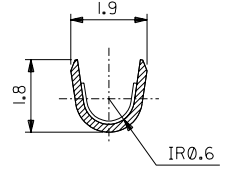
AWG, for 1560 and
1561 Crimp Terminal

This document was generated on 05/19/2010

PLEASE CHECK WWW.MOLEX.COM FOR LATEST PART INFORMATION



SECT. A-A
(SCALE 10 : 1)



SECT. B-B
(SCALE 10 : 1)

注記 NOTES:

1. 一般公差 : ±0.4
GENERAL TOLERANCES : ±0.4

角度 ANGLE	±1°
30°以上 OVER	±0.3
10°以下 UNDER	±0.25
未注	±0.2
10°以下 UNDER	±0.2
一般公差 GENERAL TOLERANCES	

材料 MATERIAL	黄銅 BRASS 0.2 t
仕上げ FINISH	—
適用電線範囲 WIRE RANGE	AWG#22-#28
被覆外径 INS. RANGE	φ 1.1~1.5

ニッケル (2 μm MIN.) 下地	39-00-0341	1855GL	バラ端子 LOOSE
金 (0.35 μm MIN.) OVER	39-00-0340	1855G	連鎖状端子 CHAIN
NICKEL (2 μm MIN.) OVER	39-00-0339	1855TL	バラ端子 LOOSE
銅 (0.5 μm MIN.) 下地	39-00-0338	1855T	連鎖状端子 CHAIN
錫 (0.9 μm MIN.) OVER			
TIN (0.9 μm MIN.) OVER			
COPPER (0.5 μm MIN.)			
メッキ PLATING	EDP.NO.	ENG.NO.	形状 FORM

molex MOLEX-JAPAN CO.,LTD. 日本モレックス株式会社
REVISE ONLY ON CAD SYSTEM
TITLE 名称
.062 DIA. CRIMP FEMALE TERMINAL
DWG. NO. SD-1855*
REV L

THIS DRAWING CONTAINS INFORMATION THAT IS PROPRIETARY TO MOLEX/JAPAN AND SHOULD NOT BE USED WITHOUT WRITTEN PERMISSION
本図面は日本モレックス(株)の所有する情報を含むもので、当社の許可なく複製を禁止する。 EN-01C(032)MXJ-32