

**PLEASE CHECK WWW.MOLEX.COM FOR LATEST PART INFORMATION**

**Part Number:** [0039000337](#)  
**Status:** **Active**  
**Overview:** [standard\\_062](#)  
**Description:** 1.57mm (.062") Diameter, Standard .062" Pin and Socket Crimp Terminal, Series 1854, 3.68mm (.145") Pitch, Male, Gold (Au) Plated Brass Contact, 22-28 AWG, Bag

**Documents:**

[Drawing \(PDF\)](#) [RoHS Certificate of Compliance \(PDF\)](#)  
[Product Specification PS-1854-001 \(PDF\)](#)

**General**

Product Family Crimp Terminals  
 Series [1854](#)  
 Crimp Quality Equipment Yes  
 Overview [standard\\_062](#)  
 Product Name Standard .062"

**Physical**

Durability (mating cycles max) 30  
 Gender Male  
 Material - Metal Brass  
 Material - Plating Mating Gold  
 Material - Plating Termination Gold  
 Packaging Type Bag  
 Plating min: Mating (µin) 14  
 Plating min: Mating (µm) 0.35  
 Plating min: Termination (µin) 14  
 Plating min: Termination (µm) 0.35  
 Termination Interface: Style Crimp or Compression  
 Wire Insulation Diameter 1.10-1.50mm (.043-.059")  
 Wire Size AWG 22, 24, 26, 28  
 Wire Size mm<sup>2</sup> 0.08-0.32

**Electrical**

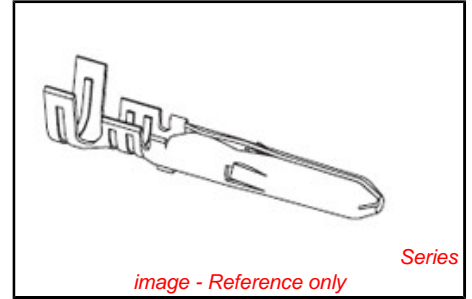
Current - Maximum per Contact 3A  
 Voltage - Maximum 250V

**Material Info**

Old Part Number 1854GL

**Reference - Drawing Numbers**

Product Specification PS-1854-001  
 Sales Drawing SD-1854\*



**EU RoHS**  
**ELV and RoHS**  
**Compliant**  
**REACH SVHC**  
 Not Reviewed  
**Halogen-Free**  
**Status**  
**Not Reviewed**

**China RoHS**



**Need more information on product environmental compliance?**

Email [productcompliance@molex.com](mailto:productcompliance@molex.com)  
 For a multiple part number RoHS Certificate of Compliance, [click here](#)

Please visit the [Contact Us](#) section for any non-product compliance questions.

**Search Parts in this Series**  
[1854Series](#)

**Mates With**  
[1855 Crimp Terminal](#)

**Use With**  
[1625np Plug Housing](#)

**Application Tooling | FAQ**

*Tooling specifications and manuals are found by selecting the products below. Crimp Height Specifications are then contained in the Application Tooling Specification document.*

Global	
Description	Product #
Hand Crimp Tool	<a href="#">0638190800</a>
Manual Extraction Tool	<a href="#">0011030002</a>
Japan	
Description	Product #
Hand Crimp Tool	<a href="#">0011260009</a>
JHTR2262A	

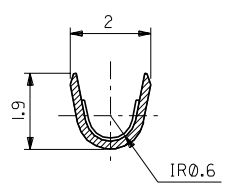
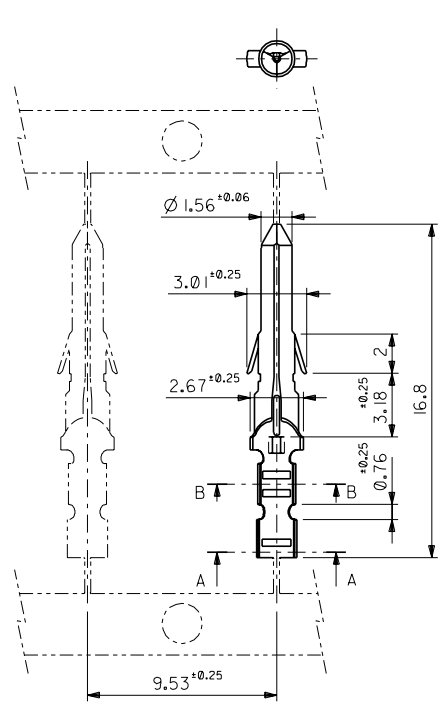
Hand Insertion Tool [0011020001](#)  
Hand Extraction Tool [0011267034](#)

This document was generated on 05/19/2010

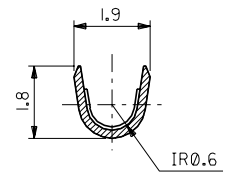
**PLEASE CHECK [WWW.MOLEX.COM](http://WWW.MOLEX.COM) FOR LATEST PART INFORMATION**

DWG. NO. SD-1854\*

ALL DIMENSIONS IN METRIC DO NOT SCALE DRAWING



SECT. A-A  
(SCALE 10 : 1)



SECT. B-B  
(SCALE 10 : 1)

注記 NOTES:  
1. 一般公差 : ±0.4  
GENERAL TOLERANCES : ±0.4

角度 ANGLE	±0.5
30°以上 OVER	±0.3
10°以上 未満 UNDER	±0.25
未過 UNDER	±0.2
一般公差 GENERAL TOLERANCES	±0.4

材料 MATERIAL	黄銅 BRASS 0.2 t
仕上げ FINISH	—
適用電線範囲 WIRE RANGE	AWG #22-#28
被覆外径 INS. RANGE	φ 1.1~1.5
記号 LTR	REBROWN (J30695)
変更内容 REVISION RECORD	DR. DATE

ニッケル (2 μm MIN.) 下地 金 (0.35 μm MIN.) GOLD (0.35 μm MIN.) OVER NICKEL (2 μm MIN.)	39-00-0337	I854GL	バラ端子 LOOSE
銅 (0.5 μm MIN.) 下地 錫 (0.9 μm MIN.) TIN (0.9 μm MIN.) OVER COPPER (0.5 μm MIN.)	39-00-0336	I854G	連鎖端子 CHAIN
銅 (0.5 μm MIN.) 下地 錫 (0.9 μm MIN.) TIN (0.9 μm MIN.) OVER COPPER (0.5 μm MIN.)	39-00-0335	I854TL	バラ端子 LOOSE
銅 (0.5 μm MIN.) 下地 錫 (0.9 μm MIN.) TIN (0.9 μm MIN.) OVER COPPER (0.5 μm MIN.)	39-00-0280	I854T	連鎖端子 CHAIN
メッキ PLATING	EDP.NO.	ENG.NO.	形状 FORM

材料 MATERIAL	黄銅 BRASS 0.2 t	MOLEX-JAPAN CO., LTD. 日本モレックス株式会社
仕上げ FINISH	—	
適用電線範囲 WIRE RANGE	AWG #22-#28	REVISE ONLY ON CAD SYSTEM
被覆外径 INS. RANGE	φ 1.1~1.5	TITLE 名称
記号 LTR	REBROWN (J30695)	.062 DIA. CRIMP MALE TERMINAL
変更内容 REVISION RECORD	DR. DATE	DWG. NO.
一般公差 GENERAL TOLERANCES	±0.4	SD-1854*
材料 MATERIAL	黄銅 BRASS 0.2 t	REV
仕上げ FINISH	—	K

THIS DRAWING CONTAINS INFORMATION THAT IS PROPRIETARY TO MOLEX/JAPAN AND SHOULD NOT BE USED WITHOUT WRITTEN PERMISSION  
本図面は日本モレックス (株) の所有する情報を含むもので 当社の許可なく複製を禁止する。  
EN-01C(032)MXJ-32