

**PLEASE CHECK WWW.MOLEX.COM FOR LATEST PART INFORMATION**

**Part Number:** [0039000280](#)  
**Status:** **Active**  
**Overview:** [standard\\_062](#)  
**Description:** 1.57mm (.062") Diameter, Standard .062" Pin and Socket Crimp Terminal, Series 1854, 3.68mm (.145") Pitch, Male, Tin (Sn) Plated Brass Contact, 22-28 AWG, Reel

**Documents:**

[Drawing \(PDF\)](#) [Product Specification PS-1854-003 \(PDF\)](#)  
[Product Specification PS-1854-002 \(PDF\)](#) [RoHS Certificate of Compliance \(PDF\)](#)

**General**

Product Family Crimp Terminals  
 Series [1854](#)  
 Crimp Quality Equipment Yes  
 Overview [standard\\_062](#)  
 Product Name Standard .062"

**Physical**

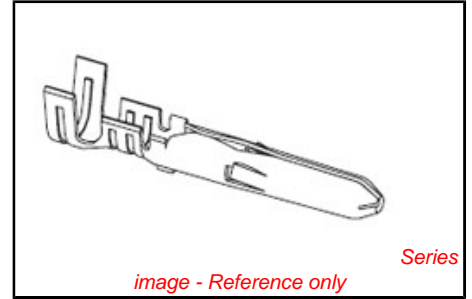
Gender Male  
 Material - Metal Brass  
 Material - Plating Mating Tin  
 Material - Plating Termination Tin  
 Packaging Type Reel  
 Plating min: Mating (µin) 35  
 Plating min: Mating (µm) 0.88  
 Plating min: Termination (µin) 35  
 Plating min: Termination (µm) 0.88  
 Termination Interface: Style Crimp or Compression  
 Wire Insulation Diameter 1.10-1.50mm (.043-.059")  
 Wire Size AWG 22, 24, 26, 28  
 Wire Size mm² N/A

**Material Info**

Old Part Number 1854T

**Reference - Drawing Numbers**

Packaging Specification [SPK-1854-001](#)  
 Product Specification [PS-1854-002](#), [PS-1854-003](#)  
 Sales Drawing [SD-1854\\*](#)



**EU RoHS**  
**ELV and RoHS**  
**Compliant**  
**REACH SVHC**  
**Contains SVHC: No**  
**Halogen-Free**  
**Status**  
**Halogen-Free**

**China RoHS**

**Need more information on product environmental compliance?**

Email [productcompliance@molex.com](mailto:productcompliance@molex.com)  
 For a multiple part number RoHS Certificate of Compliance, [click here](#)

Please visit the [Contact Us](#) section for any non-product compliance questions.

**Search Parts in this Series**  
[1854Series](#)

**Use With**  
[1625np Plug Housing](#)

**Application Tooling | FAQ**

*Tooling specifications and manuals are found by selecting the products below. Crimp Height Specifications are then contained in the Application Tooling Specification document.*

**Global**

Description	Product #
Mini-Mac™ Applicator	<a href="#">0638914000</a>
Hand Crimp Tool	<a href="#">0638190800</a>
Manual Extraction Tool	<a href="#">0011030002</a>

**Japan**

Description	Product #
Hand Insertion Tool	<a href="#">0011020001</a>
Applicator for M211A	<a href="#">0011260072</a>

Bench Press, 18-28

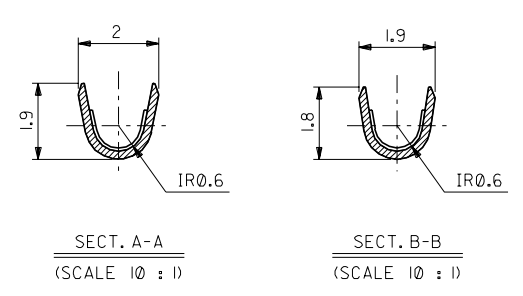
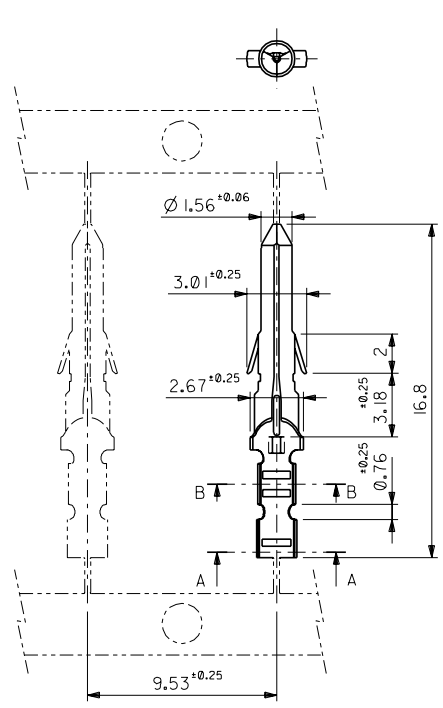
AWG, for 1560 and  
1561 Crimp Terminal

This document was generated on 05/19/2010

**PLEASE CHECK [WWW.MOLEX.COM](http://WWW.MOLEX.COM) FOR LATEST PART INFORMATION**

DWG. NO. SD-1854\*

ALL DIMENSIONS IN METRIC DO NOT SCALE DRAWING



注記 NOTES:  
1. 一般公差: ±0.4  
GENERAL TOLERANCES: ±0.4

角度 ANGLE	±0.2				
30°以上 OVER	±0.3				
10°以上 未満 UNDER	±0.25				
10°未満 UNDER	±0.2				
一般公差 GENERAL TOLERANCES	±0.4				

ニッケル (2 μm MIN.) 下地 金 (0.35 μm MIN.) GOLD (0.35 μm MIN.) OVER NICKEL (2 μm MIN.)	39-00-0337	I854GL	バラ端子 LOOSE
銅 (0.5 μm MIN.) 下地 錫 (0.9 μm MIN.) TIN (0.9 μm MIN.) OVER COPPER (0.5 μm MIN.)	39-00-0336	I854G	連鎖端子 CHAIN
銅 (0.5 μm MIN.) 下地 錫 (0.9 μm MIN.) TIN (0.9 μm MIN.) OVER COPPER (0.5 μm MIN.)	39-00-0335	I854TL	バラ端子 LOOSE
銅 (0.5 μm MIN.) 下地 錫 (0.9 μm MIN.) TIN (0.9 μm MIN.) OVER COPPER (0.5 μm MIN.)	39-00-0280	I854T	連鎖端子 CHAIN
メッキ PLATING	EDP.NO.	ENG.NO.	形状 FORM

材料 MATERIAL 黄銅 BRASS 0.2 t	MOLEX-JAPAN CO., LTD. 日本モレックス株式会社
仕上げ FINISH 適用電線範囲 WIRE RANGE AWC#22-#28	
被覆外径 INS. RANGE φ 1.1~1.5	REVISE ONLY ON CAD SYSTEM
DRAWN BY 93/07/09 H.H. HIRAMOTO CHK'D BY 93/07/09 H.H. HIRAMOTO APP'D BY 93/07/09 M.F. FUKUSHIMA SCALE 5:1	TITLE 名称 .062 DIA. CRIMP MALE TERMINAL
DWG. NO. SD-1854*	REV K

THIS DRAWING CONTAINS INFORMATION THAT IS PROPRIETARY TO MOLEX/JAPAN AND SHOULD NOT BE USED WITHOUT WRITTEN PERMISSION  
本図面は日本モレックス(株)の所有する情報を含むもので、当社の許可なく複製を禁止する。  
EN-01C(032)MXJ-32