

**PLEASE CHECK WWW.MOLEX.COM FOR LATEST PART INFORMATION**

**Part Number:** [0016060004](#)  
**Status:** **Active**  
**Description:** 1.57mm (.062") Diameter PC Board Pin Terminal, Male, Tin Plated Brass Contact

**Documents:**

[Drawing \(PDF\)](#) [RoHS Certificate of Compliance \(PDF\)](#)

**General**

Product Family	Crimp Terminals
Series	1606
Crimp Quality Equipment	Yes
Product Name	PCB Pin Terminal

**Physical**

Gender	Male
Material - Metal	Brass
Material - Plating Mating	Tin
Packaging Type	Bag
Wire Insulation Diameter	N/A
Wire Size AWG	N/A
Wire Size mm <sup>2</sup>	N/A

**Material Info**

Old Part Number	R6203
-----------------	-------

**Reference - Drawing Numbers**

Sales Drawing	SD-R62-*
---------------	----------

**EU RoHS**  
**ELV and RoHS**  
**Compliant**  
**REACH SVHC**  
**Not Reviewed**  
**Halogen-Free**  
**Status**  
**Not Reviewed**

**China RoHS**



**Need more information on product environmental compliance?**

Email [productcompliance@molex.com](mailto:productcompliance@molex.com)  
 For a multiple part number RoHS Certificate of Compliance, [click here](#)

Please visit the [Contact Us](#) section for any non-product compliance questions.

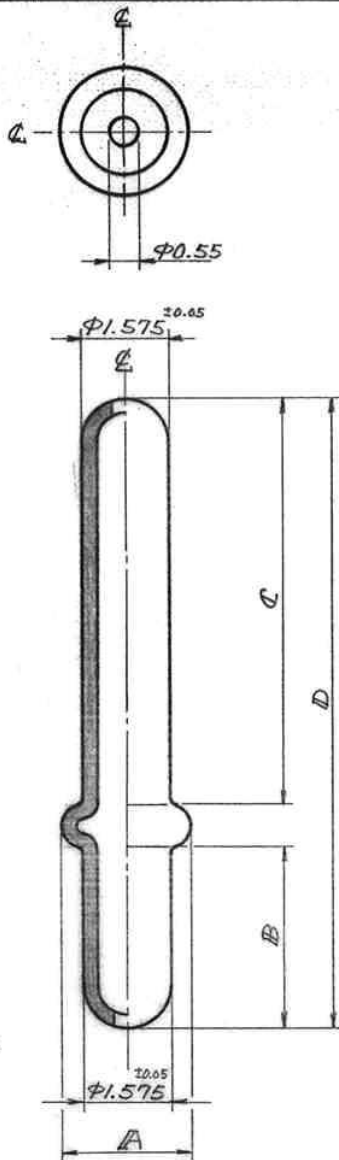
**Search Parts in this Series**  
[1606Series](#)

**Mates With**  
[1881 Series](#)

**PLEASE CHECK WWW.MOLEX.COM FOR LATEST PART INFORMATION**

ENG. NO. SD-R62-\*

EDP NO. 16-06-00\*\*



注記

1. 推奨プリント基板穴径: φ1.65<sup>±0.05</sup>

DRAWING DO NOT SCALE DRAWING

角度 ANGLE	± 3°								
30 以上 OVER	±0.3	16-06-0010	R62-5	φ2.55	3.68	7.1	11.55	錫メッキ(3μmin.)	
10 以上 30 未満 OVER UNDER	±0.25	-0011	-4	φ2.28	3.18	10.15	14.1	錫メッキ(3μmin.)	
10 未満 UNDER	±0.2	16-06-0004	R62-3	φ2.29	3.18	7.11	11.05	錫メッキ(3μmin.)	

一般公差 GENERAL TOLERANCES	EDP NO.	ENG. NO.	A	B	C	D	メッキ仕様	備考
-------------------------	---------	----------	---	---	---	---	-------	----

材料 MATERIAL		貴銅		molex MOLEX-JAPAN CO., LTD. 日本モレックス株式会社	
仕上 FINISH		表参照		EDP NO. 16-06-00**	
適用電線範囲 WIRE RANGE				ENG. NO. SD-R62-*	
被覆外径 INS. RANGE				REV D	
D REVISED	ECN No. 2395	MS	4/1/82	DRAWN BY CHK'D BY	
C1 REDRAWN	ECN No. 789	GA	9/25/78	APP'D BY 尺 度	
記号 LTR	変更内容	DR	日付 DATE	TITLE 名称: BEAD PIN	
	REVISION RECORD	CHK		SCALE 8-1	

THIS DRAWING CONTAINS INFORMATION THAT IS PROPRIETARY TO MOLEX(JAPAN) AND SHOULD NOT BE USED WITHOUT WRITTEN PERMISSION  
本図面は日本モレックス社の所有する情報を含むもので当社の許可なく複製を禁止する。