

FEATURES

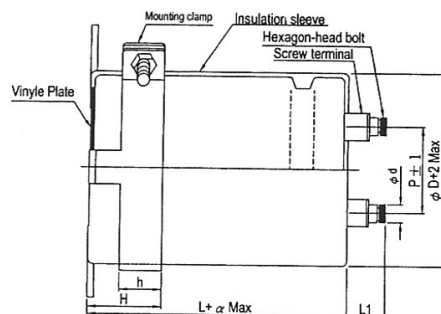
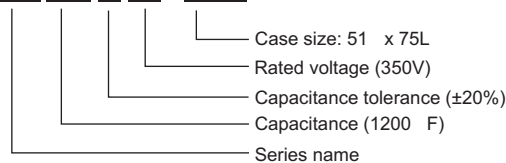
- Endurance with ripple current: 85°C, 5000 hours

SPECIFICATIONS

Item	Performance	
Operating Temp.	-40°C ~+85°C	
Capacitance Tolerance	± 20% (120Hz, 20°C)	
Leakage Current (at 20°C)	I = 0.01CV or 5 (mA) whichever is smaller (after 5 minutes) Where, C= rated capacitance in F. V= rated DC working voltage in V.	
Dissipation Factor Tan at 120Hz, 20°C	Tan (max)	0.15
Low Temperature Characteristics (at 120Hz)	Capacitance change: C(-25°C)/ C(+20°C) 0.7	
Load Life Test at 20 °C after subjected to DC voltage with rated ripple current applied for 5000 hours at 85°C	Test Time	5000 hours
	Capacitance Change	Within ±15% of initial value
	Dissipation Factor	Less than 175% of specified value
	Leakage Current	Within specified value
Shelf Life Test at 20 °C after exposing them for 1000 hours at 85°C without voltage applied. The rated voltage shall be applied to the capacitors before the measurements. (Refer to JIS 5102)	Test Time	1000 hours
	Capacitance Change	Within ±20% of initial value
	Dissipation Factor	Less than 200% of specified value
	Leakage Current	Within specified value
Ripple Current & Frequency Multipliers	Frequency (Hz)	50 / 60 120 300 1K 10K up
	Multiplier	0.7 1.0 1.1 1.3 1.4
Ripple Current & Temperature Multipliers	Temperature (°C)	40 60 85
	Mutipliers	1.89 1.67 1.0
Standards	Satisfies Characteristic W of JIS C 5101-4	

PART NUMBER EXAMPLE

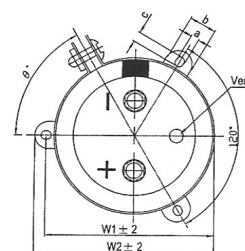
MEK 122 M 2V - B075



DIMENSIONS

D	P	L1	W1	W2	H	h	a	b	c	°	
51	22.0	2	10	61.0	65.5	21.0	15.0	7.0	12.0	4.5	60
64	28.6	2	10	72.5	78.0	25.0	20.0	7.0	14.0	4.5	60
77	32.0	2	10	85.5	91.0	35.0	20.0	8.0	16.0	4.5	60
90	32.0	2	10	101	106	34.5	20.0	8.0	16.0	5.0	60

Screw Specifications:
Plus hexagon-headed screw: M5 x 0.8 x 10
Max. screw tightening torque: 3.23Nm



DIMENSIONS & PERMISSIBLE RIPPLE CURRENT

V _{DC} Item F	350V (2V)				400V (2G)				450V (2W)				500V (2H)				525V (2Y)			
	Size Code	D x L	Tan	Ripple Current	Size Code	D x L	Tan	Ripple Current	Size Code	D x L	Tan	Ripple Current	Size Code	D x L	Tan	Ripple Current	Size Code	D x L	Tan	Ripple Current
1,000					B075	51 x 75	0.15	5.0	B075	51 x 75	0.15	5.0	B096	51 x 96	0.15	5.0	B115	51 x 115	0.20	6.7
1,200	B075	51 x 75	0.15	5.5	B075	51 x 75	0.15	5.5	B096	51 x 96	0.15	6.0	B115	51 x 115	0.20	6.6	B130	51 x 130	0.20	7.6
													C096	64 x 96	0.20	6.9	C096	64 x 96	0.20	7.5
1,500	B075	51 x 75	0.15	6.1	B096	51 x 96	0.15	6.7	B115	51 x 115	0.15	7.2	B130	51 x 130	0.20	7.8	C115	64 x 115	0.20	8.4
													C096	64 x 96	0.20	7.7	C130	64 x 130	0.20	9.1
1,800	B096	51 x 96	0.15	7.3	B096	51 x 96	0.15	7.4	B130	51 x 130	0.15	8.3	C115	64 x 115	0.20	8.6	D115	77 x 115	0.20	9.9
2,200	B096	51 x 96	0.15	8.2	B130	51 x 130	0.15	9.2	C096	64 x 96	0.15	9.0	C130	64 x 130	0.20	9.4	D130	77 x 130	0.20	10.5
2,700	B130	51 x 130	0.15	10.20	C096	64 x 96	0.15	9.9	C115	64 x 115	0.15	10.7	D115	77 x 115	0.20	9.90	D155	77 x 155	0.20	11.2
3,300	B130	51 x 130	0.15	11.30	C115	64 x 115	0.15	11.8	C130	64 x 130	0.15	12.4	D130	77 x 130	0.20	10.40	E157	90 x 157	0.20	12.1
3,900	C115	64 x 115	0.15	12.80	C130	64 x 130	0.15	13.5	D115	77 x 115	0.15	13.6	D130	77 x 155	0.20	11.00				
4,700					C155	64 x 155	0.15	15.9	C195	64 x 195	0.15	17.5								
	C130	64 x 130	0.15	14.8	D115	77 x 115	0.15	14.9	D130	77 x 130	0.15	15.6	E130	90 x 130	0.20	13.5				
5,600	C155	64 x 155	0.15	17.3	C195	64 x 195	0.15	19.1												
	D115	77 x 115	0.15	16.3	D130	77 x 130	0.15	17.0	D155	77 x 155	0.15	18.3	E157	90 x 157	0.20	15.5				
6,800	D130	77 x 130	0.15	18.8	D155	77 x 155	0.15	20.2	E157	90 x 157	0.15	21.4								
8,200	D155	77 x 155	0.15	22.1	E157	90 x 157	0.15	23.5	E157	90 x 157	0.15	23.5								
10,000	E157	90 x 157	0.15	25.9	E157	90 x 157	0.15	25.9	E196	90 x 196	0.15	28.3								
12,000	E157	90 x 157	0.15	28.4	E196	90 x 196	0.15	31.0	E236	90 x 236	0.15	33.6								
15,000	E196	90 x 196	0.15	34.6	E236	90 x 236	0.15	37.5												
18,000	E236	90 x 236	0.15	41.4																