

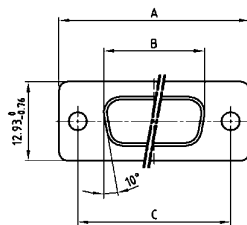
# COMBINATION D-SUB WITHOUT CONTACTS

For straight high power, coaxial or high voltage contacts



RoHS compliant – CSA listed, File No.: LR 115000-1–UL listed, File No.: E 228329

## SOCKET CONNECTOR

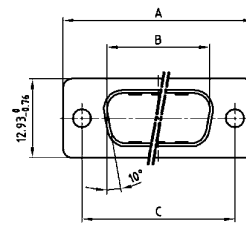


Shell size	A -0.76	B -0.25	C
1	31.19	16.46	25.00 <sup>+0.12</sup> / <sub>-0.13</sub>
2	39.52	24.79	33.30 <sup>+0.15</sup> / <sub>-0.16</sub>
3	53.42	38.50	47.04 <sup>+0.13</sup> / <sub>-0.14</sub>
4	69.70	54.96	63.50 <sup>+0.13</sup> / <sub>-0.14</sub>

## DESCRIPTION

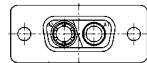
- Designs: 2W2C; 3W3; 3W3C; 5W5; 8W8
- Mounting styles:
  - with through-hole, Ø .118"/3 mm
  - with 4-40 UNC threaded insert
  - with 4-40 UNC threaded rear spacer
  - with 4-40 UNC threaded rear spacer with PCB clip .291"/7.4 mm for PCB thickness .063"/1.6 mm, .091"/2.3 mm, .126"/3.2 mm
- On request: Threaded rear spacer with PCB clip .256"/6.5 mm available
- On request: M3 thread design available
- Shell: Steel tin plated (brass tin plated or stainless steel available on request)

## PLUG CONNECTOR

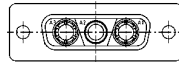


Shell size	A -0.76	B -0.25	C	D -0.30
1	31.19	16.79	25.00 <sup>+0.12</sup> / <sub>-0.13</sub>	6.12
2	39.52	25.12	33.30 <sup>+0.15</sup> / <sub>-0.16</sub>	6.12
3	53.42	38.84	47.04 <sup>+0.13</sup> / <sub>-0.14</sub>	5.99
4	69.70	55.30	63.50 <sup>+0.13</sup> / <sub>-0.14</sub>	5.99

## Coded socket connectors

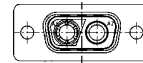


2W2C = 1 Socket – 1 Plug

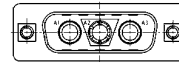


3W3C = 2 Sockets – 1 Plug

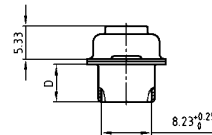
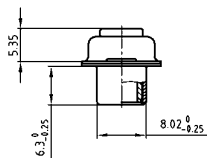
## Coded plug connectors



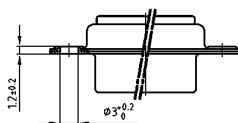
2W2C = 1 Plug – 1 Socket



3W3C = 2 Plugs – 1 Socket



## ORDER DATA

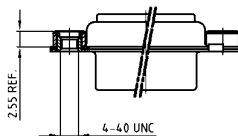


### SOCKET CONNECTOR

Design	Mounting style	Part Number
3W3	Through-hole	3 003W3SXX99A10 X
5W5	Through-hole	3 005W5SXX99A10 X
8W8	Through-hole	3 008W8SXX99A10 X
Coded version		
2W2C	Through-hole	3 02W2CSXX99A10 X
3W3C	Through-hole	3 03W3CSXX99A10 X

### PLUG CONNECTOR

Design	Mounting style	Part Number
3W3	Through-hole	3 003W3PXX99A10 X
5W5	Through-hole	3 005W5PXX99A10 X
8W8	Through-hole	3 008W8PXX99A10 X
Coded version		
2W2C	Through-hole	3 02W2CPXX99A10 X
3W3C	Through-hole	3 03W3CPXX99A10 X



### SOCKET CONNECTOR

Design	Mounting style 4-40 UNC	Part Number
3W3	Threaded insert	3 003W3SXX99A30 X
5W5	Threaded insert	3 005W5SXX99A30 X
8W8	Threaded insert	3 008W8SXX99A30 X
Coded version		
2W2C	Threaded insert	3 02W2CSXX99A30 X
3W3C	Threaded insert	3 03W3CSXX99A30 X

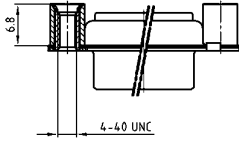
### PLUG CONNECTOR

Design	Mounting style 4-40 UNC	Part Number
3W3	Threaded insert	3 003W3PXX99A30 X
5W5	Threaded insert	3 005W5PXX99A30 X
8W8	Threaded insert	3 008W8PXX99A30 X
Coded version		
2W2C	Threaded insert	3 02W2CPXX99A30 X
3W3C	Threaded insert	3 03W3CPXX99A30 X

# COMBINATION D-SUB – MOUNTING STYLES

For straight high power, coaxial or high voltage contacts

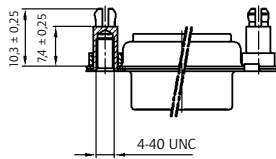
**ORDER DATA**



SOCKET CONNECTOR		
Design	Mounting style 4-40 UNC	Part Number
3W3	Threaded rear spacer	3 003W3SXX99A50 X
5W5	Threaded rear spacer	3 005W5SXX99A50 X
8W8	Threaded rear spacer	3 008W8SXX99A50 X
Coded version		
2W2C	Threaded rear spacer	3 02W2CSXX99A50 X
3W3C	Threaded rear spacer	3 03W3CSXX99A50 X

PLUG CONNECTOR		
Design	Mounting style 4-40 UNC	Part Number
3W3	Threaded rear spacer	3 003W3PXX99A50 X
5W5	Threaded rear spacer	3 005W5PXX99A50 X
8W8	Threaded rear spacer	3 008W8PXX99A50 X
Coded version		
2W2C	Threaded rear spacer	3 02W2CPXX99A50 X
3W3C	Threaded rear spacer	3 03W3CPXX99A50 X

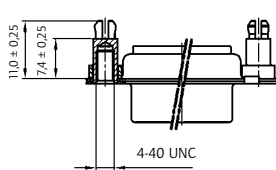
PCB thickness .063" / 1.6 mm



SOCKET CONNECTOR		
Design	Mounting style 4-40 UNC	Part Number
3W3	Threaded rear spacer PCB clip	3 003W3SXX99E20 X
5W5	Threaded rear spacer PCB clip	3 005W5SXX99E20 X
8W8	Threaded rear spacer PCB clip	3 008W8SXX99E20 X
Coded version		
2W2C	Threaded rear spacer PCB clip	3 02W2CSXX99E20 X
3W3C	Threaded rear spacer PCB clip	3 03W3CSXX99E20 X

PLUG CONNECTOR		
Design	Mounting style 4-40 UNC	Part Number
3W3	Threaded rear spacer PCB clip	3 003W3PXX99E20 X
5W5	Threaded rear spacer PCB clip	3 005W5PXX99E20 X
8W8	Threaded rear spacer PCB clip	3 008W8PXX99E20 X
Coded version		
2W2C	Threaded rear spacer PCB clip	3 02W2CPXX99E20 X
3W3C	Threaded rear spacer PCB clip	3 03W3CPXX99E20 X

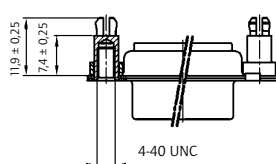
PCB thickness .091" / 2.3 mm



SOCKET CONNECTOR		
Design	Mounting style 4-40 UNC	Part Number
3W3	Threaded rear spacer PCB clip	3 003W3SXX99E40 X
5W5	Threaded rear spacer PCB clip	3 005W5SXX99E40 X
8W8	Threaded rear spacer PCB clip	3 008W8SXX99E40 X
Coded version		
2W2C	Threaded rear spacer PCB clip	3 02W2CSXX99E40 X
3W3C	Threaded rear spacer PCB clip	3 03W3CSXX99E40 X

PLUG CONNECTOR		
Design	Mounting style 4-40 UNC	Part Number
3W3	Threaded rear spacer PCB clip	3 003W3PXX99E40 X
5W5	Threaded rear spacer PCB clip	3 005W5PXX99E40 X
8W8	Threaded rear spacer PCB clip	3 008W8PXX99E40 X
Coded version		
2W2C	Threaded rear spacer PCB clip	3 02W2CPXX99E40 X
3W3C	Threaded rear spacer PCB clip	3 03W3CPXX99E40 X

PCB thickness .126" / 3.2 mm



SOCKET CONNECTOR		
Design	Mounting style 4-40 UNC	Part Number
3W3	Threaded rear spacer PCB clip	3 003W3SXX99E60 X
5W5	Threaded rear spacer PCB clip	3 005W5SXX99E60 X
8W8	Threaded rear spacer PCB clip	3 008W8SXX99E60 X
Coded version		
2W2C	Threaded rear spacer PCB clip	3 02W2CSXX99E60 X
3W3C	Threaded rear spacer PCB clip	3 03W3CSXX99E60 X

PLUG CONNECTOR		
Design	Mounting style 4-40 UNC	Part Number
3W3	Threaded rear spacer PCB clip	3 003W3PXX99E60 X
5W5	Threaded rear spacer PCB clip	3 005W5PXX99E60 X
8W8	Threaded rear spacer PCB clip	3 008W8PXX99E60 X
Coded version		
2W2C	Threaded rear spacer PCB clip	3 02W2CPXX99E60 X
3W3C	Threaded rear spacer PCB clip	3 03W3CPXX99E60 X

PCB clip .122" ± 0.004" ± 0.10 mm hole diameter