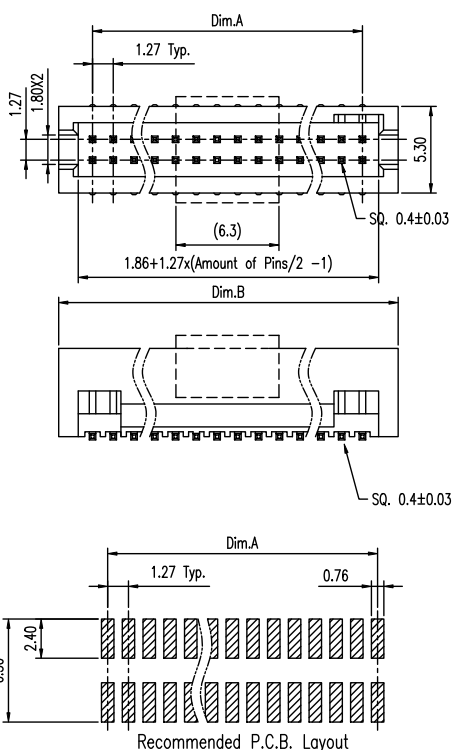


Tous droits strictement réservés. Reproduction ou communication a des tiers interdite sous quelque forme que ce soit sans autorisation écrite du propriétaire. Propriété de c FCI. Droits de reproduction FCI.

All rights strictly reserved. Reproduction or issue to third parties in any form whatever is not permitted without written authority from the proprietor. Property of FCI. Copyright FCI.



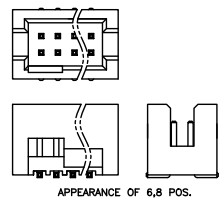
Recommended P.C.B. Layout  
Layout Tolerance = ± 0.05 mm

TABLE 1

DASH No.	DIM	Amount of Pins	Dim.A	Dim.B
-000 06 XX LF	6	2.54	6.80	
-000 08 XX LF	8	3.81	8.07	
-000 10 XX LF	10	5.08	9.34	
-000 12 XX LF	12	6.35	10.16	
-000 14 XX LF	14	7.62	11.88	
-000 16 XX LF	16	8.89	13.15	
-000 20 XX LF	20	11.43	15.89	
-000 26 XX LF	26	15.24	19.50	
-000 30 XX LF	30	17.78	22.04	
-000 34 XX LF	34	20.32	24.58	

DASH No.	DIM	Amount of Pins	Dim.A	Dim.B
-000 40 XX LF	40	24.13	28.39	
-000 44 XX LF	44	26.67	29.66	
-000 50 XX LF	50	30.48	34.74	
-000 60 XX LF	60	36.83	41.09	
-000 64 XX LF	64	39.37	43.63	
-000 66 XX LF	66	40.64	44.90	
-000 68 XX LF	68	41.91	46.17	
-000 80 XX LF	80	49.53	53.79	
-000 A0 XX LF	100	62.23	66.49	



APPEARANCE OF 6,8 POS.

- NOTE:
- MATERIAL,  
HOUSING: HIGH TEMP PLASTIC, UL94-V0, BLACK  
TERMINAL: COPPER ALLOY, SQ=0.40±0.03MM
  - FINISH:  
TERMINAL: GOLD AT CONTACT,  
G/F OVER 1um(40u")MIN Ni OVER ALL
  - SPEC.:  
PRODUCT SPEC: GS-12-629  
PACKING SPEC: GS-14-1420
  - THE HSG. WILL WITHSTAND EXPOSURE TO 260C  
PEAK TEMP. FOR 10 SEC. IN A CONVECTION, INFRA-RED  
OR VAPOR PHASE REFLOW OVEN.
  - CO-PLANARITY OF SOLDER TAIL 0.10MM MAX. FOR 4 TO 40 POS.  
CO-PLANARITY OF SOLDER TAIL 0.12MM MAX. FOR 42 TO 100 POS.

6. PRODUCT NUMBERING:  
20021221 - 0 0 0 XX X X LF

- LEAD FREE
- PLATING:  
1: GOLD FLASH ALL OVER  
4: 0.25um(10U")GOLD AT CONTACT  
8: 0.76um(30U")GOLD AT CONTACT
- PACKING  
D: TUBE+ CAP  
T: TUBE  
C: REEL+CAP(6,8,10,12,16,20P)
- PIN COUNT  
SEE TABLE 1
- SELECTED LOADED OPTION  
0: FULL LOADED  
OTHERS: SEE TABLE 2

mat'l. code				tolerances unless otherwise specified				CUSTOMER COPY		FCI		www.fciconnect.com	
ltr	ecr no	dr	date	linear	.X ± 0.38		projection		title				
A	T09-1117	S.LIN	09/15/09		.XX ± 0.25		MM		1.27X1.27MM BTB HEADER				
B	T10-0017	S.LIN	01/21/10	angles	.XXX ± 0.10		0° ± 2°		SHROUDED, SMT				
C	T10-0061	S.LIN	10'-5-07	dr	STERLING LIN	09/15/09	product family		585		code		
				engr	STERLING LIN	09/15/09	size		dwg no		TWN		
				chr	GARY HSIEH	09/15/09	scale		A4		sheet		
				appd	JOSEPH HSIA	09/15/09	NA		20021221		1 of 2		
sheet index	revision sheet	C	C										
		1	2										

Tous droits strictement reserves. Reproduction ou communication a des tiers interdite sous quelque forme que ce soit sans autorisation écrite du propriétaire. Propriete de c FCI. Droits de reproduction FCI.

All rights strictly reserved. Reproduction or issue to third parties in any form whatever is not permitted without written authority from the proprietor. Property of FCI. Copyright FCI.

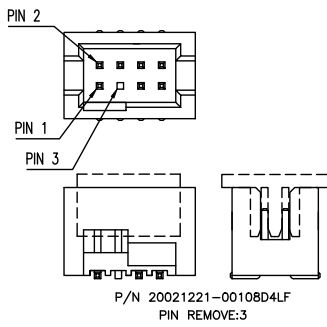


TABLE 2

DASH No.	DIM	Amount of Pins	PIN REMOVED
-001 08 D4 LF	7	3	

mat'l. code				tolerances unless otherwise specified		CUSTOMER COPY		FCI www.fciconnect.com		
ltr	ecn no	dr	date	linear	.X ± 0.38	projection	title	1.27X1.27MM BTB HEADER SHROUDED, SMT		
A	T09-1117	S.LIN	09/15/09		.XX ± 0.25					
B	T10-0017	S.LIN	01/21/10		.XXX ± 0.10					
C	T10-0061	S.LIN	10'-5-07	angles	0° ± 2°	 MM	product family	585		
				dr	STERLING LIN			09/15/09	size	dwg no
				engr	STERLING LIN			09/15/09		
				chr	GARY HSIEH			09/15/09		
				appd	JOSEPH HSIA	09/15/09	scale	A4 20021221		
sheet index	revision sheet	C	C							
		1	2							

ACAD **PDM: Rev:C** STATUS: **Released** cage code Printed: May 11, 2010