

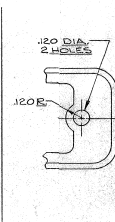
5 NUT ESNA (6-32) BRASS, QQ-B-226 CAP PLATE PLUS NAT. TRIDITE.

1 SHELL RECEPTACLE, ALUMINUM, 6061-T50, ANODIZE & SEAL IN POTASSIUM DICHROMATE.

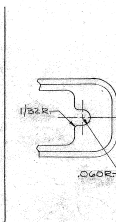
2 FL. HD. SCREW (4-40) BRASS QQ-B-226 CAP PLATE PLUS NAT. TRIDITE.

3 NUT ESNA (4-20) ALUMINUM QQ-A-225 ALDOME PER MIL. C-3541.

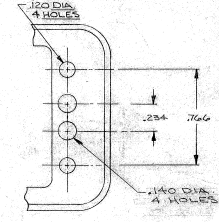
4 FL. HD. SCREW (4-20) BRASS QQ-B-226 CAP PLATE PLUS NAT. TRIDITE.



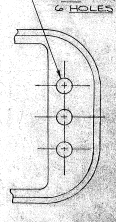
TYPE II



TYPE III



TYPE IV



TYPE V

30253 F.

NOTE:
ITEMS 2 AND 3 FURNISHED WITH SIZES 34 THRU 25
ITEMS 4 AND 5 FURNISHED WITH SIZE 104

INDICATES POLARIZATION

CATALOG NUMBER	TYPE	A	B	C	D	E	F	G
XMREA4-20000	IV	.875	2.375	1.49	2.13	1.688	2.906	.285
XMREA15-20000	IV	2.282	1.11	2.08	1.378	2.862	.363	
XMREA6-20000	V	5.00	1.969	1.13	1.72	1.269	2.425	.744
XMREA50-20000	I	4.68	2.282	.78	2.05	1.019	2.862	.363
XMREA42-20000	I	4.68	2.000	.78	1.75	.894	2.454	.760
XMREA34-20000	I	4.68	1.687	.78	1.44	.894	2.144	.664
XMREA26-20000	II	1.312	.57	1.19	.706	1.769	.416	
XMREA20-20000	II	1.250	.45	1.13	.581	1.766	.385	
XMREVB-20000	II	1.000	.57	.88	.706	1.457	.260	
XMREVA-20000	II	.937	.45	.81	.581	1.554	.223	
XMREA3-20000	III	1.000	.38	.88	.515	1.454	.260	

** - NO. OF CONTACTS

TOLERANCE UNLESS OTHERWISE SPECIFIED XX DECIMALS 100% DIMENSIONAL 500% ANGULAR ± 1/2°

DATE: 2-15-68
 DRAWN BY: C
 CHECKED BY: C
 TITLE: COMPOSITE OUTLINE SHELLS RECEPTACLE MATERIAL: XMREA/XMRE/XAC 20-0000
 SCALE: ON PLIANCE ORP ZIEM
 DATE: 2-20-68
 WINCHESTER ELECTRONICS, DANVILLE, CONN.
 B-1 30253 F