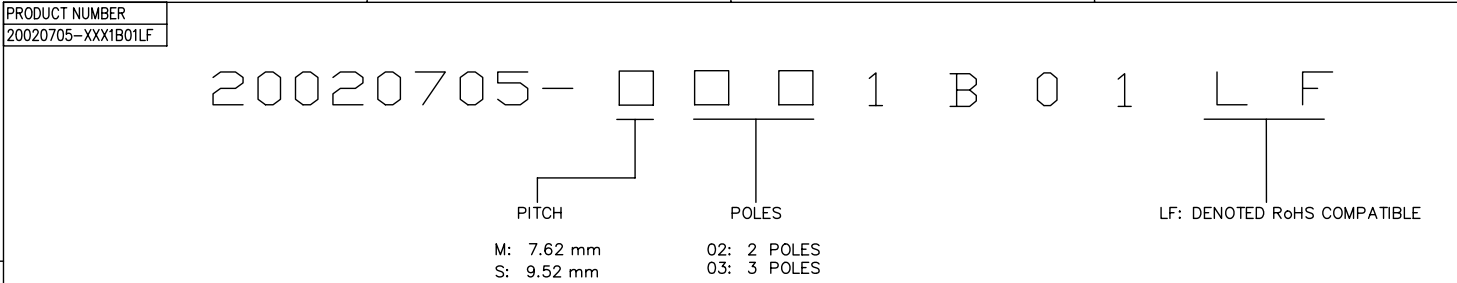


FCI CONFIDENTIAL



This document is the property of and embodies CONFIDENTIAL and PROPRIETARY information of FCI. No part of the information shown on this document may be used in any way or disclosed to others without the written consent of FCI. Copyright FCI.



PROPERTY TABLE		
FCI SERIES NAME	12-762	12-952
PITCH (mm)	7.62	9.52
VOLTAGE RATING (VAC)	300	300
CURRENT RATING (A)	30	30
APPLICABLE WIRE RANGE(AWG)	10~24	10~24
WIRE CROSS SECTION (mm*mm)	6~0.2	6~0.2
WIRE STRIP LENGTH(mm)	6~7	6~7
TORQUE +/-10% (N-m/Lb-in)	1.01/8.9	1.01/8.9
SCREW	M3.5x0.5	M3.5x0.5
WITHSTANDING VOLTAGE (kV)	1.6	1.6
OPERATING TEMP. (°C)	-40~+115	-40~+115
SOLDERING TEMP. (°C)	250±10 (5 sec.)	250±10 (5 sec.)
POLES AVAILABLE	02~03	02~03
SAFETY CERTIFICATE		

- NOTES:**
- MATERIALS**  
1-1 HOUSING: THERMAL PLASTIC RESIN, UL 94V-0 RATED, COLOR GREEN.  
1-2 SCREW: STEEL, ZINC PLATED.  
1-3 CLAMP: BRASS, NICKEL PLATED.  
1-4 TERMINAL: COPPER, TIN PLATED.
  - PRODUCT SPECIFICATION REFER TO FCI GS-12-625.
  - BOXED PACKAGING,  
DETAILED PRODUCT PACKING SPECIFICATION REFER TO FCI GS-14-1394.
  - FCI, SAFETY CERTIFICATE LOGO AND SERIES NAME TO BE SHOWN ON PRODUCT SURFACE.
  - THE PRODUCTS WHERE THE PART NUMBER END IN "LF" MEET THE EUROPEAN UNION DIRECTIVE AND OTHER COUNTRY REGULATIONS AS DESCRIBED IN GS-22-008.
  - RECOMMENDED SOLDERING PROCESS BY WAVE SOLDER.

TOLERANCES UNLESS OTHERWISE SPECIFIED				rev	ecn no	dr	date
LINEAR	X	±0.5	D	T10-0029	JH	012710	
	XX	±0.30	E	T10-0042	VL	030310	
	XXX	±0.10	-	-	-	-	
ANGULAR	X'	±1'	-	-	-	-	

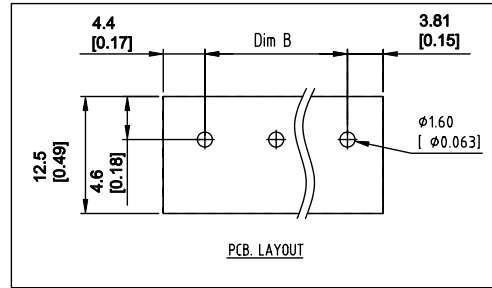
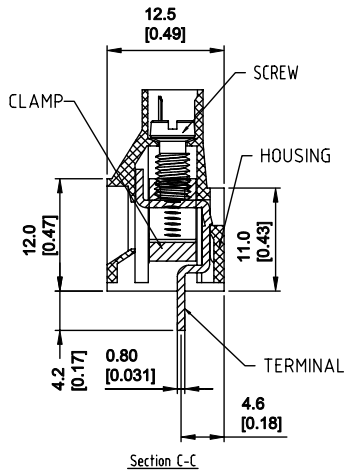
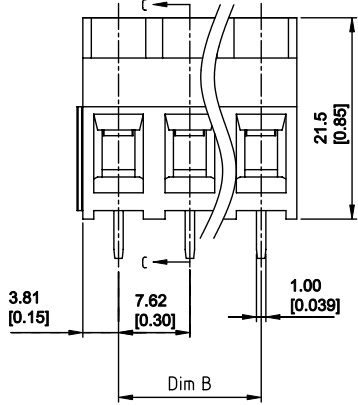
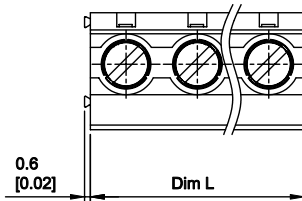
Material		Spec ref *	
Mat code		tolerance	projection
Heattreat		✓	⊕
Plating/Finish		size	MM [INCH]
Dr	BEER FU 062509	A4	Scale
Eng	BEER FU 062509	Product family	
Chr	GARY HSIEH 062509	Model Name	ECN T10-0042
Appr	JOSEPH HSIA 062509	Model Revision	REL Level RELEASED
	TERMINAL BLOCK	chg no	20020705
Pro/E file	catalog no	CUSTOMER	Rev. E
		sheet 1 of 3	

FCI CONFIDENTIAL



This document is the property of and embodies CONFIDENTIAL and PROPRIETARY information of FCI. No part of the information shown on this document may be used in any way or disclosed to others without the written consent of FCI. Copyright FCI.

PRODUCT NUMBER	SERIES NAME	PITCH
20020705-MXX1B01LF	12-762	7.62 mm



N = Number of poles  
 Dim L =  $N \times 7.62 [0.300]$   
 Dim B =  $(N-1) \times 7.62 [0.300]$

TOL.	Dim L	Dim B
2-3p	±0.15 [0.006]	

Material			Spec ref	
Mat code			tolerance	projection
Heattreat			size	Scale
Plating/Finish			MM [INCH]	
Dr	BEER FU	062509	Product family	A4
Eng	GARY HSIEH	062509	Model Name	ECN T10-0042
Appr	JOSEPH HSIA	062509	Model Revision	REL Level RELEASED
FCI		title	Terminal Block	Rev. E
Pro/E file		catalog no	20020705	sheet 2 of 3

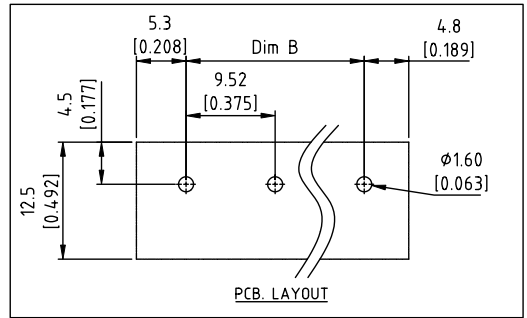
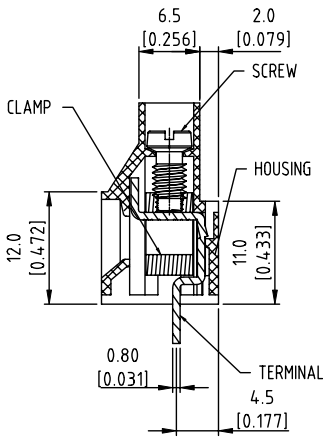
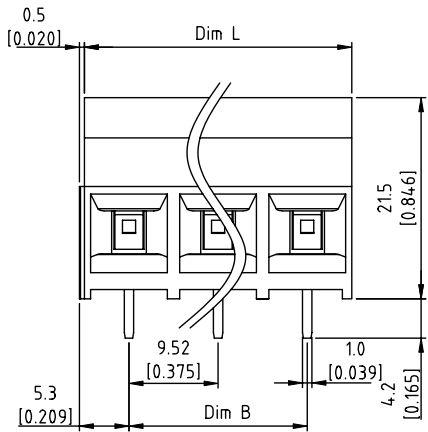
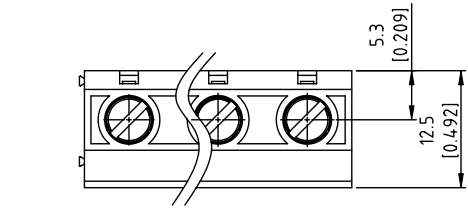
3 **PDM: Rev:E** STATUS: **Released** 4 Printed: May 08, 2010

FCI CONFIDENTIAL



This document is the property of and embodies CONFIDENTIAL and PROPRIETARY information of FCI. No part of the information shown on this document may be used in any way or disclosed to others without the written consent of FCI. Copyright FCI.

PRODUCT NUMBER	SERIES NAME	PITCH
20020705-SXX1B01LF	12-952	9.52 mm



N = Number of poles  
 Dim L =  $N \times 9.52 [0.375]$   
 Dim B =  $(N-1) \times 9.52 [0.375]$

TOL.	Dim L	Dim B
2-3p	$\pm 0.15 [0.006]$	

Material			Spec ref	
Mat code			tolerance	projection
Heattreat				
Plating/Finish			size	Scale
Dr	BEER FU	062509		
Eng	BEER FU	062509	Product family	
Chr	GARY HSIEH	062509	Model Name	
Appr	JOSEPH HSIA	062509	Model Revision	
			REL Level	RELEASED
title TERMINAL BLOCK Fixed horizontal		dwg no 20020705	Rev. E	
Pro/E file		catalog no	CUSTOMER	sheet 3 of 3