

FCI CONFIDENTIAL



This document is the property of and embodies CONFIDENTIAL and PROPRIETARY information of FCI. No part of the information shown on this document may be used in any way or disclosed to others without the written consent of FCI. Copyright FCI.

PRODUCT NUMBER
20020110-XXXXA01LF

20020110- [] [] [] [] A 0 1 L F

PITCH
C: 3.50 mm
D: 3.81 mm
G: 5.00 mm
H: 5.08 mm

POLES
02: 2 POLES
03: 3 POLES
04: 4 POLES
|
|
24: 24 POLES

HOUSING CODE
1: GREEN
2: BLACK

LF: DENOTED RoHS COMPATIBLE

PROPERTY TABLE				
FCI SERIES NAME	06-350	06-381	06-500	06-508
PITCH (mm)	3.50	3.81	5.00	5.08
VOLTAGE RATING (VAC)	300	300	300	300
CURRENT RATING (A)	10	10	12	12
WITHSTANDING VOLTAGE (kV)	1.6	1.6	1.6	1.6
OPERATING TEMP. (°C)	-40~+115	-40~+115	-40~+115	-40~+115
SOLDERING TEMP. (°C)	250±10 (5 sec.)	250±10 (5 sec.)	250±10 (5 sec.)	250±10 (5 sec.)
POLES AVAILABLE	02~24	02~24	02~24	02~24
SAFETY CERTIFICATE				

- NOTES:**
- MATERIALS**
1-1 HOUSING: THERMALPLASTIC RESIN, UL 94V-0 RATED.
1-2 TERMINAL: COPPER, TIN PLATED.
 - PRODUCT SPECIFICATION REFER TO FCI GS-12-625.
 - BOXED PACKAGING,
DETAILED PRODUCT PACKING SPECIFICATION REFER TO FCI GS-14-1394.
 - FCI, SAFETY CERTIFICATE LOGO AND SERIES NAME TO BE SHOWN ON PRODUCT SURFACE.
 - THE PRODUCTS WHERE THE PART NUMBER END IN "LF" MEET THE EUROPEAN UNION DIRECTIVE AND OTHER COUNTRY REGULATIONS AS DESCRIBED IN GS-22-008.
 - RECOMENDED SOLDERING PROCESS BY WAVE SOLDER.

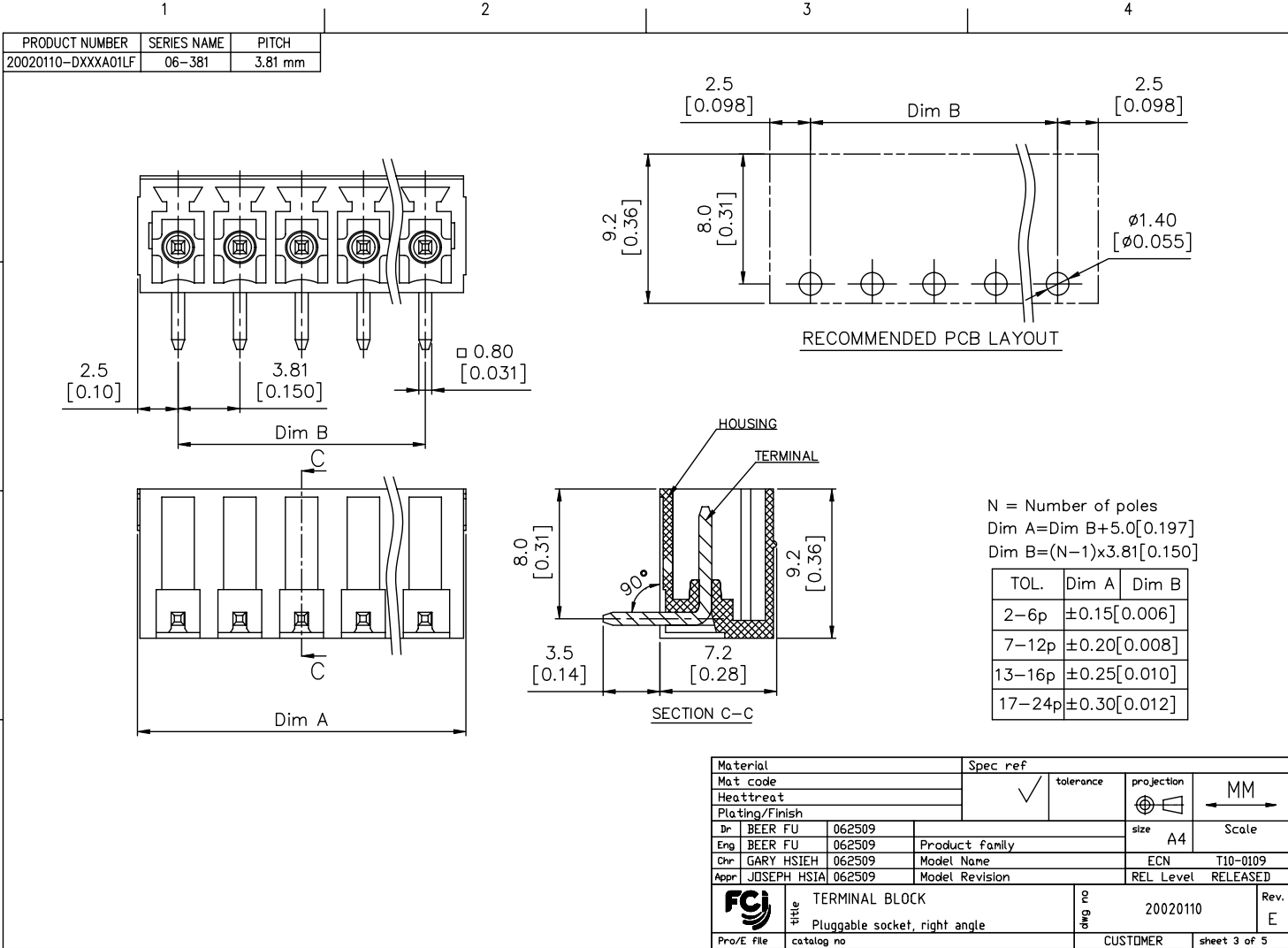
TOLERANCES UNLESS OTHERWISE SPECIFIED				rev	ecn no	dr	date
LINEAR	X	±0.5		A	0609-0203	BF	062509
	XX	±0.30		B	T09-1148	BF	111709
	XXX	±0.10		C	T09-1152	BF	112609
ANGULAR	X'	±1°		D	T10-0042	VL	030310
				E	T10-0109	VL	070810

Material		Spec ref *	
Mat code		tolerance	projection
Heattreat		✓	MM
Plating/Finish			⊕
Dr	BEER FU 062509		size A4
Eng	BEER FU 062509	Product family	Scale
Chr	GARY HSIEH 062509	Model Name	ECN T10-0109
Appr	JOSEPH HSIA 062509	Model Revision	REL Level RELEASED
	title	20020110	Rev. E
Pro/E file	catalog no	CUSTOMER	sheet 1 of 5

FCI CONFIDENTIAL



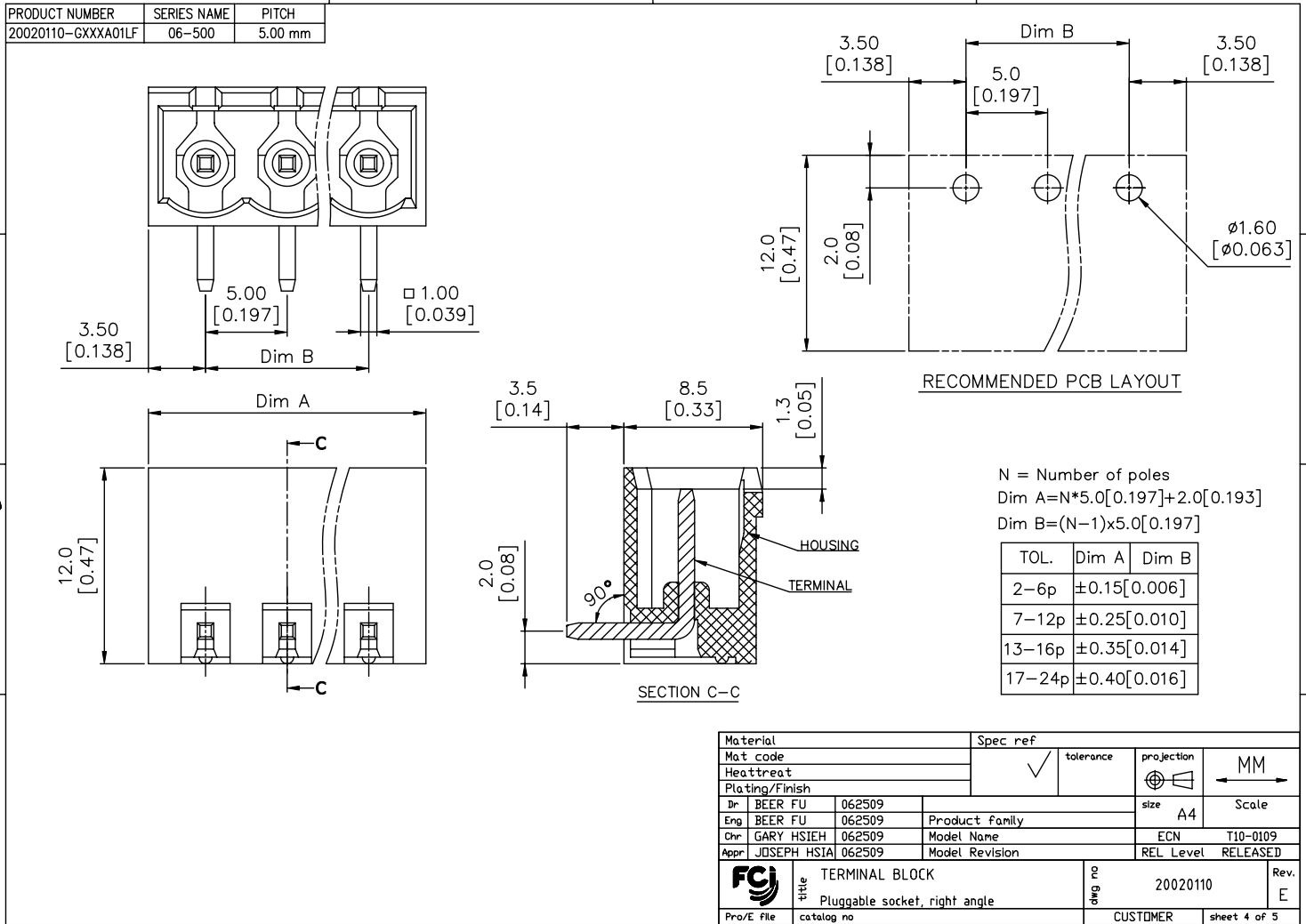
This document is the property of and embodies CONFIDENTIAL and PROPRIETARY information of FCI. No part of the information shown on this document may be used in any way or disclosed to others without the written consent of FCI. Copyright FCI.



FCI CONFIDENTIAL



This document is the property of and embodies CONFIDENTIAL and PROPRIETARY information of FCI. No part of the information shown on this document may be used in any way or disclosed to others without the written consent of FCI. Copyright FCI.



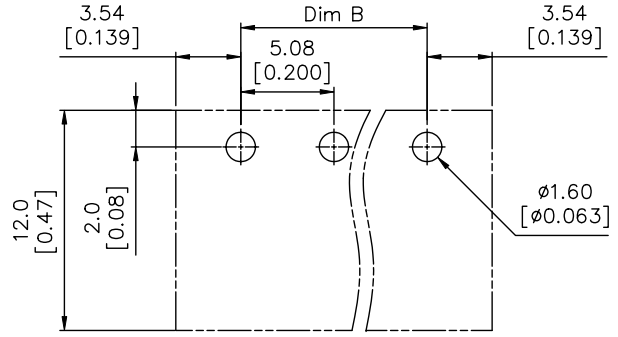
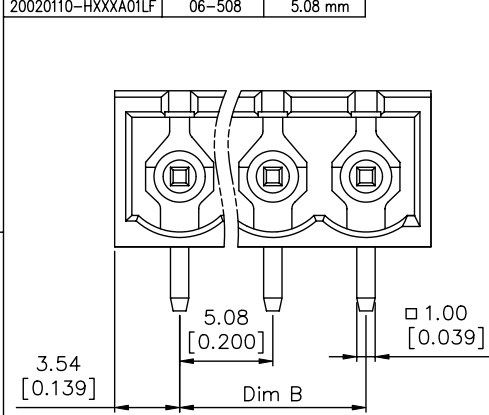
Material		Spec ref	
Mat code		tolerance	projection
Heattreat		✓	MM
Plating/Finish			size
Dr BEER FU 062509			A4
Eng BEER FU 062509	Product family		Scale
Chr GARY HSIEH 062509	Model Name	ECN	T10-0109
Appr JOSEPH HSIA 062509	Model Revision	REL Level	RELEASED
FCI	title	dwg no	Rev.
Pro/E file	catalog no	CUSTOMER	E

FCI CONFIDENTIAL

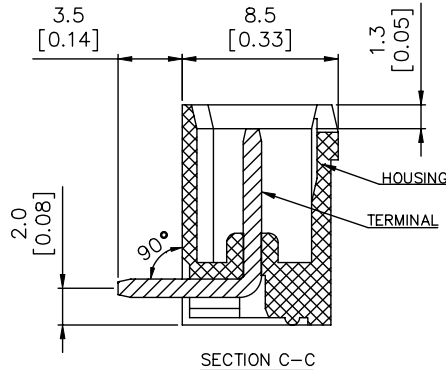
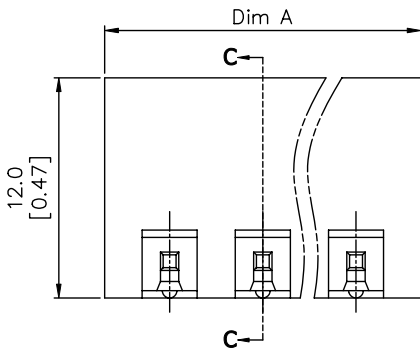


This document is the property of and embodies CONFIDENTIAL and PROPRIETARY information of FCI. No part of the information shown on this document may be used in any way or disclosed to others without the written consent of FCI. Copyright FCI.

PRODUCT NUMBER	SERIES NAME	PITCH
20020110-HXXXA01LF	06-508	5.08 mm



RECOMMENDED PCB LAYOUT



SECTION C-C

N = Number of poles
 Dim A = $N \times 5.08 [0.200] + 2.0 [0.193]$
 Dim B = $(N-1) \times 5.08 [0.200]$

TOL.	Dim A	Dim B
	2-6p	$\pm 0.15 [0.006]$
	7-12p	$\pm 0.25 [0.010]$
	13-18p	$\pm 0.35 [0.014]$
	19-24p	$\pm 0.40 [0.016]$

Material		Spec ref	
Mat code		tolerance	projection
Heattreat		<input checked="" type="checkbox"/>	<input type="checkbox"/>
Plating/Finish		size	MM
Dr	BEER FU 062509	Product family	A4
Eng	GARY HSIEH 062509	Model Name	Scale
Chr	JOSEPH HSIA 062509	Model Revision	ECN T10-0109
Appr		REL Level	RELEASED
FCI	title	20020110	Rev.
Pro/E file	catalog no	CUSTOMER	E
		sheet 5 of 5	