

PLEASE CHECK WWW.MOLEX.COM FOR LATEST PART INFORMATION

Part Number: [0022031121](#)
Status: **Active**
Description: 2.50mm (.098") Pitch Header, Single Row, 7.50mm (.295") Mating Pin Length, 12 Circuits

Documents:

3D Model	Product Specification PS-3022-002 (PDF)
Drawing (PDF)	Product Specification PS-99020-0088 (PDF)
Product Specification PS-3022-001 (PDF)	RoHS Certificate of Compliance (PDF)

Agency Certification

UL E29179

General

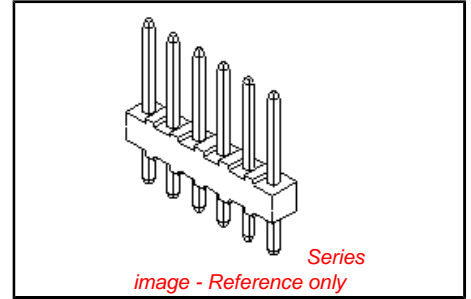
Product Family	PCB Headers
Series	3022
Application	Wire-to-Board
Product Name	N/A

Physical

Breakaway	No
Circuits (Loaded)	12
Circuits (maximum)	12
Color - Resin	Natural (White)
Flammability	94V-0
Glow-Wire Compliant	No
Lock to Mating Part	None
Material - Metal	Brass
Material - Plating Mating	Tin
Material - Plating Termination	Tin
Material - Resin	Nylon
Number of Rows	1
Orientation	Vertical
PC Tail Length (in)	0.134 In
PC Tail Length (mm)	3.40 mm
PCB Locator	No
PCB Retention	None
PCB Thickness Recommended (in)	0.062 In
PCB Thickness Recommended (mm)	1.60 mm
Packaging Type	Bag
Pitch - Mating Interface (in)	0.098 In
Pitch - Mating Interface (mm)	2.50 mm
Plating min: Mating (µin)	200
Plating min: Mating (µm)	5
Plating min: Termination (µin)	200
Plating min: Termination (µm)	5
Polarized to Mating Part	No
Polarized to PCB	No
Shrouded	No
Stackable	No
Temperature Range - Operating	-40°C to +105°C
Termination Interface: Style	Through Hole

Electrical

Current - Maximum per Contact	3A
Voltage - Maximum	250V



EU RoHS

ELV and RoHS Compliant

REACH SVHC

Not Reviewed

Halogen-Free

Status

Not Reviewed

Need more information on product environmental compliance?

Email productcompliance@molex.com
 For a multiple part number RoHS Certificate of Compliance, [click here](#)

Please visit the [Contact Us](#) section for any non-product compliance questions.

China RoHS



Search Parts in this Series

[3022Series](#)

Mates With

[3024](#) , [5224](#)

Solder Process Data

Duration at Max. Process Temperature (seconds)	5
Lead-free Process Capability	Wave Capable (TH only)
Max. Cycles at Max. Process Temperature	1
Process Temperature max. C	230

Material Info

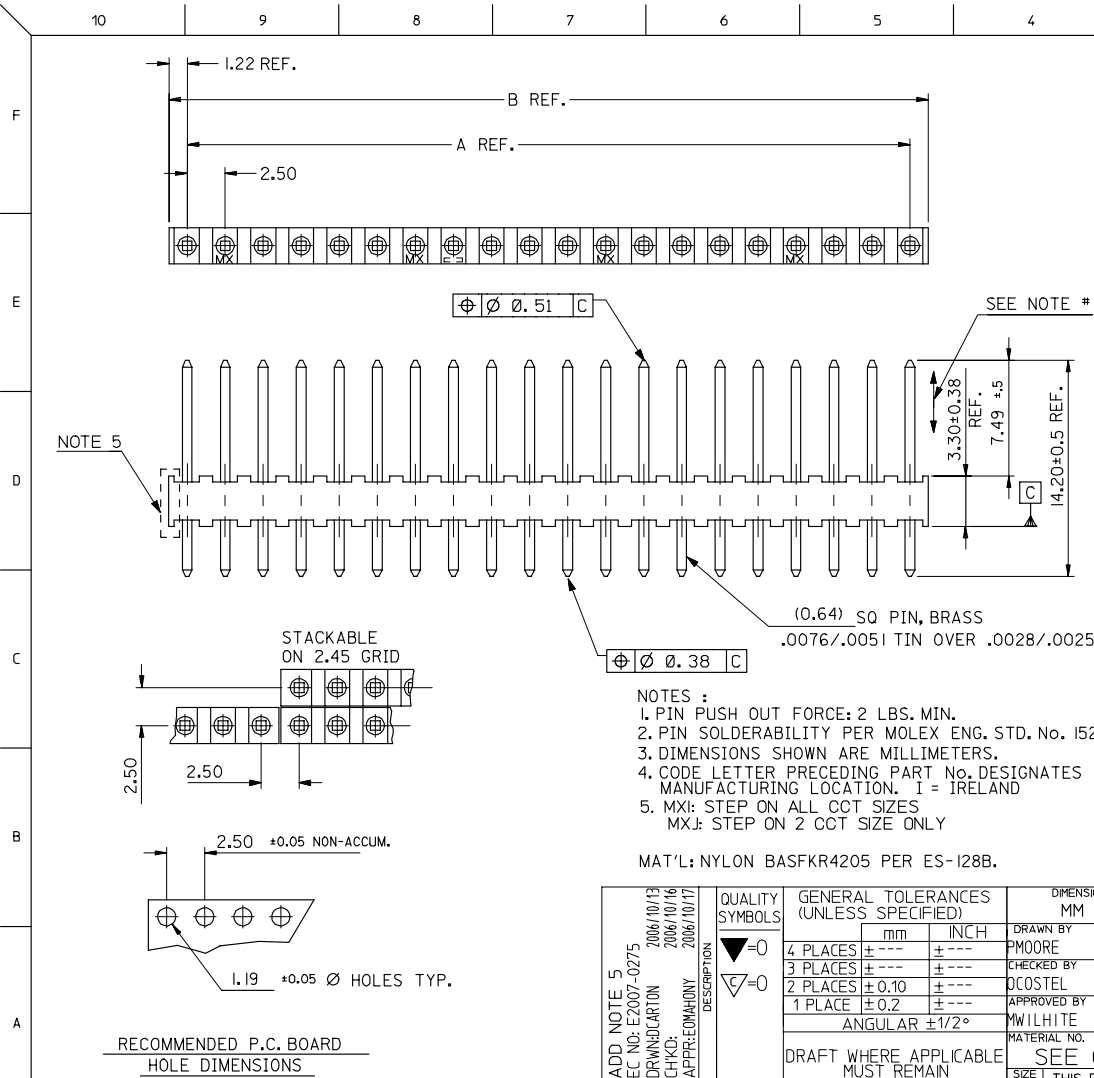
Old Part Number	3022-12A
-----------------	----------

Reference - Drawing Numbers

Product Specification	PS-3022-001, PS-3022-002, PS-99020-0088
Sales Drawing	SD-3022-NA, SDAE-3022-NA-*

This document was generated on 04/15/2010

PLEASE CHECK WWW.MOLEX.COM FOR LATEST PART INFORMATION



10	9	8	7	6	5	4	3	2	1		
							NOT TOOLED	AE-3022-25A	25	60.0	62.4
							22-03-122I	AE-3022-22A	22	52.5	54.9
							22-03-121I	21A	21	50.0	52.4
							22-03-120I	20A	20	47.5	49.9
							-119I	19A	19	45.0	47.4
							-118I	18A	18	42.5	44.9
							-117I	17A	17	40.0	42.4
							-116I	16A	16	37.5	39.9
							-115I	15A	15	35.0	37.4
							-114I	14A	14	32.5	34.9
							-113I	13A	13	30.0	32.4
							-112I	12A	12	27.5	29.9
							-111I	11A	11	25.0	27.4
							-110I	10A	10	22.5	24.9
							-109I	9A	9	20.0	22.4
							-108I	8A	8	17.5	19.9
							-107I	7A	7	15.0	17.4
							-106I	6A	6	12.5	14.9
							-105I	5A	5	10.0	12.4
							-104I	4A	4	7.5	9.9
							-103I	3A	3	5.0	7.4
							22-03-102I	AE-3022 -2A	2	2.5	4.9
							PART No.	ENG. No.	No OF CKTS.	DIM. A	DIM. B

ADD NOTE 5 EC NO: E2007-0275 DRAWN: CARTON CHKD: CHIKO APPR: EDMAHONY 2006/10/13 2006/10/16 2006/10/17	QUALITY SYMBOLS ▽=0 ▽=0	GENERAL TOLERANCES (UNLESS SPECIFIED)	DIMENSION STYLE		SCALE	DESIGN UNITS	THIRD ANGLE PROJECTION
			MM ONLY	INCH			
DRAWN BY P MOORE 1998/01/10	CHECKED BY D COSTEL 1998/04/08	APPROVED BY M WILHITE 1998/04/08	DRAWN BY		DATE	TITLE	MINI-KON WAFER 2.5 CEN ASSY
			P MOORE	1998/01/10			
DRAFT WHERE APPLICABLE MUST REMAIN WITHIN DIMENSIONS			MATERIAL NO.		DOCUMENT NO.		SHEET NO.
SEE CHART			SDAE-3022-NA-*		1 OF 3		
THIS DRAWING CONTAINS INFORMATION THAT IS PROPRIETARY TO MOLEX INCORPORATED AND SHOULD NOT BE USED WITHOUT WRITTEN PERMISSION							