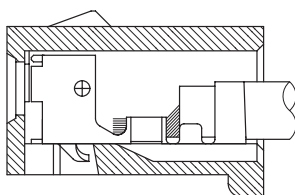
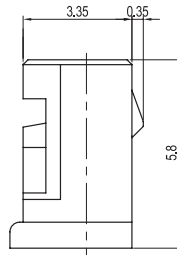
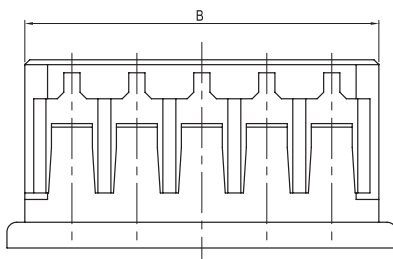
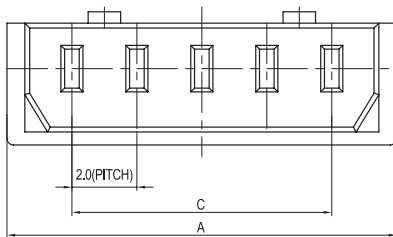
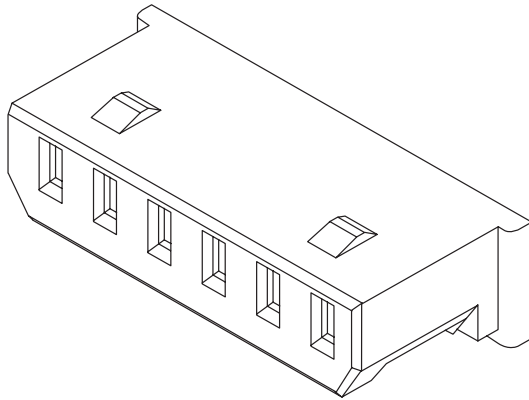


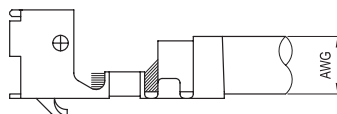
2.00mm (0.079") PITCH CONNECTOR

Wire-to-Board
Housing

20017HS Series



TERMINAL ASSEMBLY DRAWING



AWG : #24~#28

Material

I/NO	DESCRIPTION	TITLE	MATERIAL
1	HOUSING	20017HS	PBT, UL 94V Grade

Available Pin

PARTS NO.	DIM. A	DIM. B	DIM. C
20017HS-02000	6.0	4.9	2.0
20017HS-03000	8.0	6.9	4.0
20017HS-04000	10.0	8.9	6.0
20017HS-05000	12.0	10.9	8.0
20017HS-06000	14.0	12.9	10.0
20017HS-07000	16.0	14.9	12.0
20017HS-08000	18.0	16.9	14.0
20017HS-09000	20.0	18.9	16.0
20017HS-10000	22.0	20.9	18.0
20017HS-11000	24.0	22.9	20.0
20017HS-12000	26.0	24.9	22.0
20017HS-13000	28.0	26.9	24.0
20017HS-14000	30.0	28.9	26.0
20017HS-15000	32.0	30.9	28.0

Specification

ITEM	SPEC
Voltage Rating	AC/DC 125V
Current Rating	AC/DC 2A
Operating Temperature	-25 °C ~ +85 °C
Contact Resistance	30mΩ MAX
Withstanding Voltage	AC500V/1min
Insulation Resistance	1000MΩ MIN
Applicable Wire	AWG #24~#28
Applicable P.C.B	-
Applicable FPC/FFC	-
Solder Height	-
Crimp Tensile Strength	-
UL FILE NO	-

Application Terminal : 20017TS (79 page)