

The LS4351 is an enhancement mode N-Channel Mosfet

The LS4351 is an enhancement mode N-Channel Mosfet designed for use as a General Purpose amplifier or switch

The hermetically sealed TO-72 package is well suited for high reliability and harsh environment applications.

(See Packaging Information).

LS4351 Features:

- Low ON Resistance
- Low Capacitance
- High Gain
- High Gate Breakdown Voltage
- Low Threshold Voltage

FEATURES

DIRECT REPLACEMENT FOR INTERSIL 2N4351

HIGH DRAIN CURRENT $I_D = 100\text{mA}$

HIGH GAIN $g_{fs} = 1000\mu\text{S}$

ABSOLUTE MAXIMUM RATINGS
@ 25°C (unless otherwise noted)

Maximum Temperatures

Storage Temperature -65°C to +200°C

Operating Junction Temperature -55°C to +150°C

Maximum Power Dissipation

Continuous Power Dissipation 375mW

MAXIMUM CURRENT

Drain to Source (Note 1) 100mA

MAXIMUM VOLTAGES

Drain to Body 25V

Drain to Source 25V

Peak Gate to Source (Note 2) ±125V

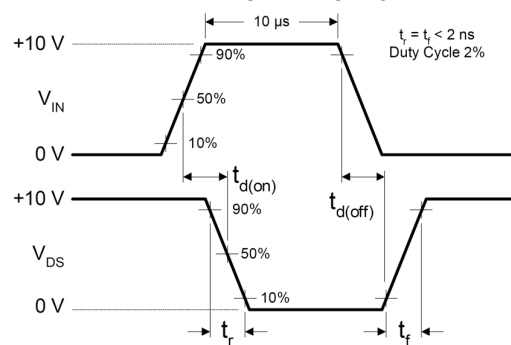
LS4351 ELECTRICAL CHARACTERISTICS @ 25°C (unless otherwise noted)

SYMBOL	CHARACTERISTIC	MIN	TYP.	MAX	UNITS	CONDITIONS
BV_{DS}	Drain to Source Breakdown Voltage	25	--	--	V	$I_D = 10\mu\text{A}, V_{GS} = 0\text{V}$
$V_{DS(on)}$	Drain to Source "On" Voltage	--	--	1		$I_D = 2\text{mA}, V_{GS} = 10\text{V}$
$V_{GS(th)}$	Gate to Source Threshold Voltage	1	--	5	pA	$V_{DS} = 10\text{V}, I_D = 10\mu\text{A}$
I_{GSS}	Gate Leakage Current	--	--	10		$V_{GS} = \pm 30\text{V}, V_{DS} = 0\text{V}$
I_{DSS}	Drain Leakage Current "Off"	--	--	10	nA	$V_{GS} = 10\text{V}, V_{DS} = 10\text{V}$
$I_{D(on)}$	Drain Current "On"	3	--	--	mA	$V_{GS} = 10\text{V}, V_{DS} = 10\text{V}$
g_{fs}	Forward Transconductance	1000	--	--	μS	$V_{DS} = 10\text{V}, I_D = 2\text{mA}, f = 1\text{MHz}$
$r_{DS(on)}$	Drain to Source "On" Resistance	--	--	300	Ω	$V_{GS} = 10\text{V}, I_D = 0\text{A}, f = 1\text{kHz}$
C_{rss}	Reverse Transfer Capacitance	--	--	1.3	pF	$V_{DS} = 0\text{V}, V_{GS} = 0\text{V}, f = 140\text{kHz}$
C_{iss}	Input Capacitance	--	--	5		$V_{DS} = 10\text{V}, V_{GS} = 0\text{V}, f = 140\text{kHz}$
C_{db}	Drain to Body Capacitance	--	--	5.0		$V_{DS} = 10\text{V}, f = 140\text{kHz}$

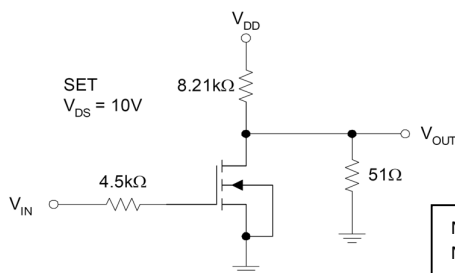
SWITCHING CHARACTERISTICS

SYMBOL	CHARACTERISTIC	MAX	UNITS
$t_{d(on)}$	Turn On Delay Time	45	ns
t_r	Turn On Rise Time	65	
$t_{d(off)}$	Turn Off Delay Time	60	
t_f	Turn Off Fall Time	100	

TIMING WAVEFORMS



SWITCHING TEST CIRCUIT



Note 1 - Absolute maximum ratings are limiting values above which LS4351 serviceability may be impaired.
Note 2 - Device must not be tested at ±125V more than once or longer than 300ms.

Micross Components Europe



Tel: +44 1603 788967

Email: chipcomponents@micross.com

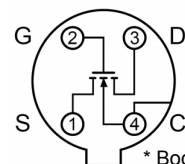
Web: <http://www.micross.com/distribution>

Available Packages:

LS4351 in TO-72
LS4351 in bare die.

Please contact Micross for full package and die dimensions

TO-72 (Bottom View)



* Body tied to case

Information furnished by Linear Integrated Systems and Micross Components is believed to be accurate and reliable. However, no responsibility is assumed for its use; nor for any infringement of patents or other rights of third parties which may result from its use. No license is granted by implication or otherwise under any patent or patent rights of Linear Integrated Systems.