





# SMT POWER INDUCTORS

## Shielded Drum Core - PG0040/41 Series



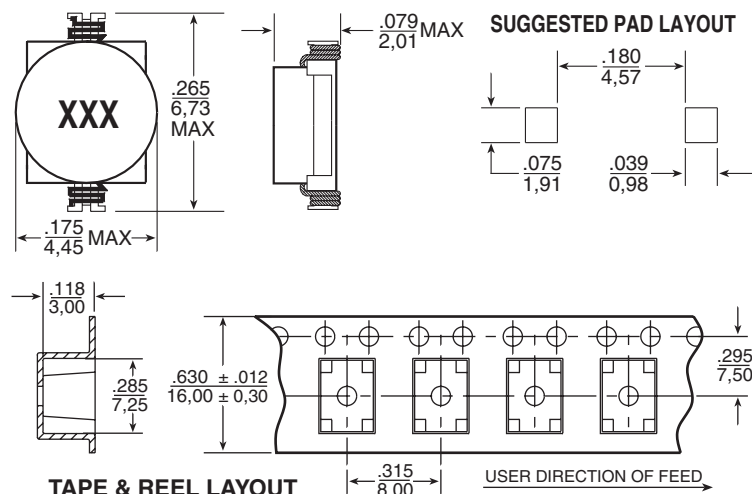
-  **Height:** 2.0mm Max
-  **Footprint:** 6.7mm x 4.5mm Max
-  **Current Rating:** up to 1.2A
-  **Inductance Range:** 0.7 $\mu$ H to 3500 $\mu$ H

### Electrical Specifications @ 25°C — Operating Temperature -40°C to +130°C

Part <sup>2,3</sup> Number	Inductance @0Adc ( $\mu$ H $\pm$ 20%)	Inductance @Irated ( $\mu$ H TYP)	Irated <sup>5</sup> (A)	DCR (m $\Omega$ )		Saturation <sup>6</sup> Current -30% (A)	Heating <sup>7</sup> Current Idc +30°C (A)	Core Loss <sup>8</sup> Factor (K2)	SRF (MHz)
				TYP	MAX				
<b>PG0040 SERIES</b>									
PG0040.102	1.0	0.7	1.2	30	40	1.2	2.2	3000	>40
PG0040.152	1.5	1.0	1.0	40	54	1.0	1.9	3500	>40
PG0040.222	2.2	1.5	.960	50	64	.960	1.6	4200	>40
PG0040.332	3.3	2.3	.750	55	68	.750	1.3	4600	>40
PG0040.472	4.7	3.3	.650	65	74	.650	1.1	5800	32
PG0040.682	6.8	4.8	.500	75	89	.500	1.0	6800	24
PG0040.103	10	7.0	.400	80	106	.400	.800	8400	18
PG0040.153	15	10.5	.300	120	154	.300	.600	10000	13
PG0040.223	22	15.4	.230	163	188	.230	.500	13000	12
PG0040.333	33	23.1	.205	240	278	.205	.400	15000	10
PG0040.473	47	32.9	.195	360	406	.195	.330	18000	9.0
PG0040.683	68	47.6	.150	550	594	.150	.270	22000	7.0
PG0040.104	100	70	.120	810	857	.120	.250	27000	5.0
PG0040.154	150	105	.105	1210	1397	.105	.190	33000	4.0
PG0040.224	220	154	.096	1550	1683	.096	.150	40000	3.0
<b>PG0041 SERIES</b>									
PG0041.334	330	231	.070	2350	2650	.070	.120	49000	2.8
PG0041.474	470	329	.062	3620	3830	.062	.105	58000	2.6
PG0041.604	600	420	.048	4230	4520	.048	.096	65000	2.2
PG0041.684	680	476	.045	4700	4800	.045	.090	70000	1.6
PG0041.824	820	574	.040	5700	6350	.040	.080	77000	1.2
PG0041.105	1000	700	.035	6600	6800	.035	.076	84000	1.0
PG0041.205	2000	1400	.032	14700	15600	.032	.054	120000	0.9
PG0041.305	3000	2100	.024	24700	26000	.024	.042	150000	0.7
PG0041.505	5000	3500	.019	37000	39000	.019	.030	190000	0.5

NOTES FROM TABLE: (See page 43)

### Mechanical



### Schematic

Weight . . . . . 0.1 grams  
Tape & Reel . . . . . 2500/reel

Dimensions:  $\frac{\text{Inches}}{\text{mm}}$   
Unless otherwise specified,  
all tolerances are  $\pm \frac{.010}{0.25}$

