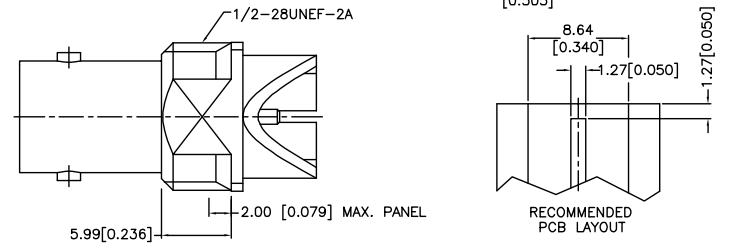
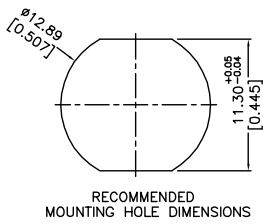
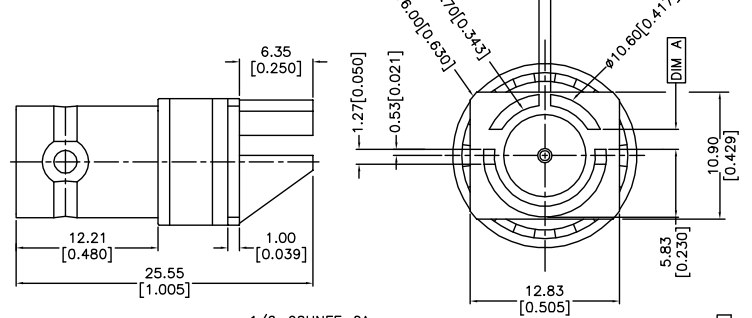
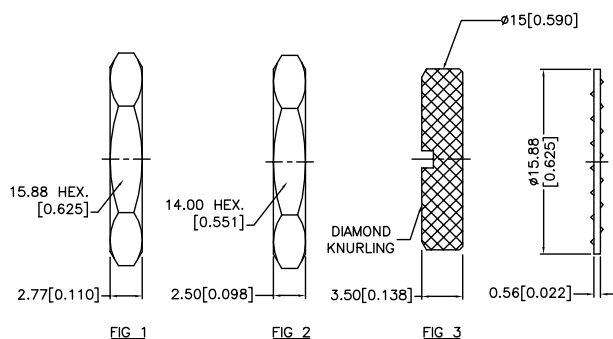


REV.	DATE	DESCRIPTION
A	10/13/09	RELEASE TO MFG.
B	01/22/10	ADDED PN:112740-12 THROUGH 112740-17 AND BOARD THICKNESS OPTIONS
C	02/04/10	THREAD LENGTH AND MAX. PANEL THICKNESS DIMENSION UPDATED



NO	PART NUMBER	RECOMMENDED PCB THICKNESS	DIM A	INCLUDED NUT
6	112740-17	0.084"	.087+0.003/-0.0	FIG 3
5	112740-16	0.084"	.087+0.003/-0.0	FIG 2
4	112740-15	0.084"	.087+0.003/-0.0	FIG 1
3	112740-14	0.062"	.069+/-0.002	FIG 3
2	112740-13	0.062"	.069+/-0.002	FIG 2
1	112740-12	0.062"	.069+/-0.002	FIG 1

NOTES:
BNC RECEPT SHIPS WITH ONLY ONE KIND OF THREADED NUT, SEE TABLE FOR DETAIL

NO	DESCRIPTION	MATERIAL	FINISH	QTY	UNLESS OTHERWISE SPECIFIED DIMENSIONS ARE IN MILLIMETERS DIMENSIONS IN [] ARE IN INCHES AND FOR CUSTOMER REFERENCE ONLY.	APPROVALS	DATE	AMPHENOL CONNEX											
6	NUT	BRASS	NICKEL	1	UNLESS OTHERWISE SPECIFIED TOLERANCES FOR MILLIMETERS ARE: 0.5 - 8mm ± 0.20mm 8 - 30mm ± 0.40mm 30 - 120mm ± 0.50mm	DRAWN	BALAJI M	01/22/10	PART DESCRIPTION BNC END LAUNCH RECEPT.JACK,75 OHMS										
5	LOCK WASHER	BRASS	NICKEL	1		CHECKED													
4	HOUSING	BRASS	GOLD	1		ISSUED													
3	CONTACT PIN	PHOSPHOR BRONZE	GOLD	1	UNLESS OTHERWISE SPECIFIED TOLERANCES FOR INCHES ARE: .020 - .315 = ± 0.007" .315 - 1.180 = ± 0.015" 1.180 - 4.724 = ± 0.020"	SHEET	1 OF 1		PART NO. 112740-XX										
2	INSULATOR	TEFLON	NATURAL	1		CAD FILE	C:\112\112740-XX.DWG	DWG. NO.					112740-XX.DWG	REV.	C	SIZE	A	SCALE	NA
1	BODY	BRASS	GOLD	1		DO NOT SCALE DRAWING													