

PLEASE CHECK WWW.MOLEX.COM FOR LATEST PART INFORMATION

Part Number: [1044429702](#)
Status: **Active**
Description: .205 P-Lock Flag Terminal, Tin

Documents:

[Drawing \(PDF\)](#) [RoHS Certificate of Compliance \(PDF\)](#)
[Product Specification PS-104442-001 \(PDF\)](#)

General

Product Family	Crimp Terminals
Series	104441
Crimp Quality Equipment	Yes
Product Name	MP-Lock™

Physical

Durability (mating cycles max)	10
Gender	Female
Material - Metal	Brass
Material - Plating Mating	Tin
Material - Plating Termination	Tin
Packaging Type	Reel
Plating min: Mating (µin)	32.00
Plating min: Mating (µm)	0.800
Plating min: Termination (µin)	32.00
Plating min: Termination (µm)	0.80
Wire Insulation Diameter	N/A
Wire Size AWG	24
Wire Size mm²	N/A

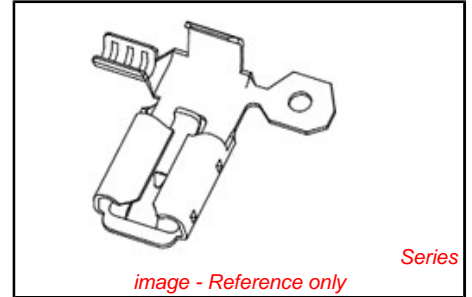
Electrical

Current - Maximum per Contact	2.5A
-------------------------------	------

Material Info

Reference - Drawing Numbers

Packaging Specification	PK-104442-001
Product Specification	PS-104442-001
Sales Drawing	SD-104442-001



EU RoHS ELV and RoHS Compliant REACH SVHC Contains SVHC: No Halogen-Free Status Not Reviewed	China RoHS 
---	--

Need more information on product environmental compliance?

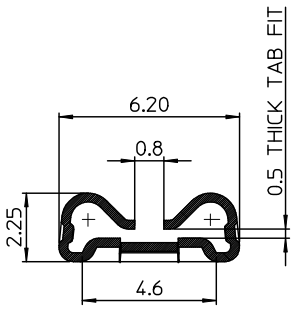
Email productcompliance@molex.com
 For a multiple part number RoHS Certificate of Compliance, [click here](#)

Please visit the [Contact Us](#) section for any non-product compliance questions.

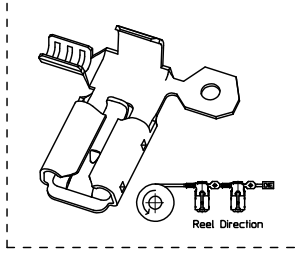
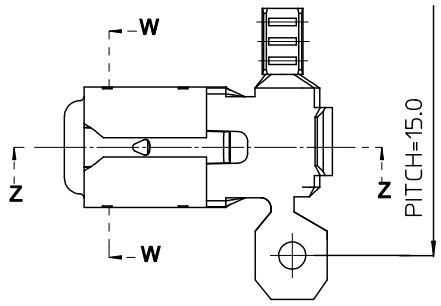
Search Parts in this Series
[104441Series](#)

PLEASE CHECK WWW.MOLEX.COM FOR LATEST PART INFORMATION

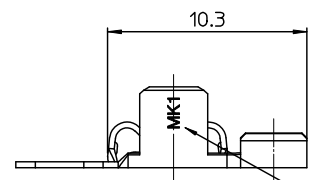
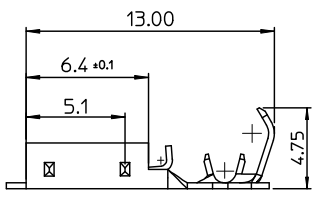
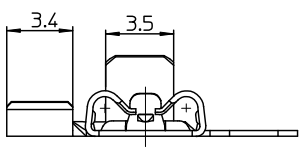
10 9 8 7 6 5 4 3 2 1



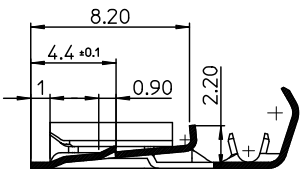
SECTION W-W



- NOTES.
- 1.MATERIAL : BRASS
 - 2.FINISH : PRE-TIN PLATED
0.8~1.8μm TIN PLATING
OVERALL 0.3~0.8μm COPPER PLATING
 3. PRODUCT SPECIFICATION : PS-104442-001
 4. PACKING SPECIFICATION : PK-104442-001
 5. CRIMPING SPECIFICATION : CS-104442-001
 6. MATED TAB : 0.5t
 7. APPLICABLE WIRE RANGE :
AWG#24(UL1007)
AWG#24+AWG#24(UL1061)



TRADE MARK



SECTION Z-Z

NEW RELEASED EC NO: KOR2009-0084 DRAWN: JHPARK01 2009/03/02 CHKD: WY. YANG 2009/03/02 APPR: YUNSHIKIM 2009/03/02	QUALITY SYMBOLS ▽=0 ▽=0	GENERAL TOLERANCES (UNLESS SPECIFIED)		DIMENSION STYLE MM ONLY		SCALE 5:1	DESIGN UNITS METRIC	THIRD ANGLE PROJECTION	
		4 PLACES ± --- ± ---	mm INCH	DRAWN BY JH. PARK	DATE 2009/02/27	TITLE .205 P-LOCK FLAG TERMINAL			
		3 PLACES ± --- ± ---		CHECKED BY WY. YANG	DATE 2009/02/27	MOLEX INCORPORATED			
		2 PLACES ± 0.20 ± --- 1 PLACE ± 0.30 ± ---		APPROVED BY EH. JUNG	DATE 2009/02/27	DOCUMENT NO. SD-104442-001			
		ANGULAR ± 1 °		MATERIAL NO.		SHEET NO.			
DRAFT WHERE APPLICABLE MUST REMAIN WITHIN DIMENSIONS		SEE NOTES		THIS DRAWING CONTAINS INFORMATION THAT IS PROPRIETARY TO MOLEX INCORPORATED AND SHOULD NOT BE USED WITHOUT WRITTEN PERMISSION		1 OF 01			

lb_frame_A3_P_ME_T
Rev. E 2006/04/15

9 8 7 6 5 4 3 2 1