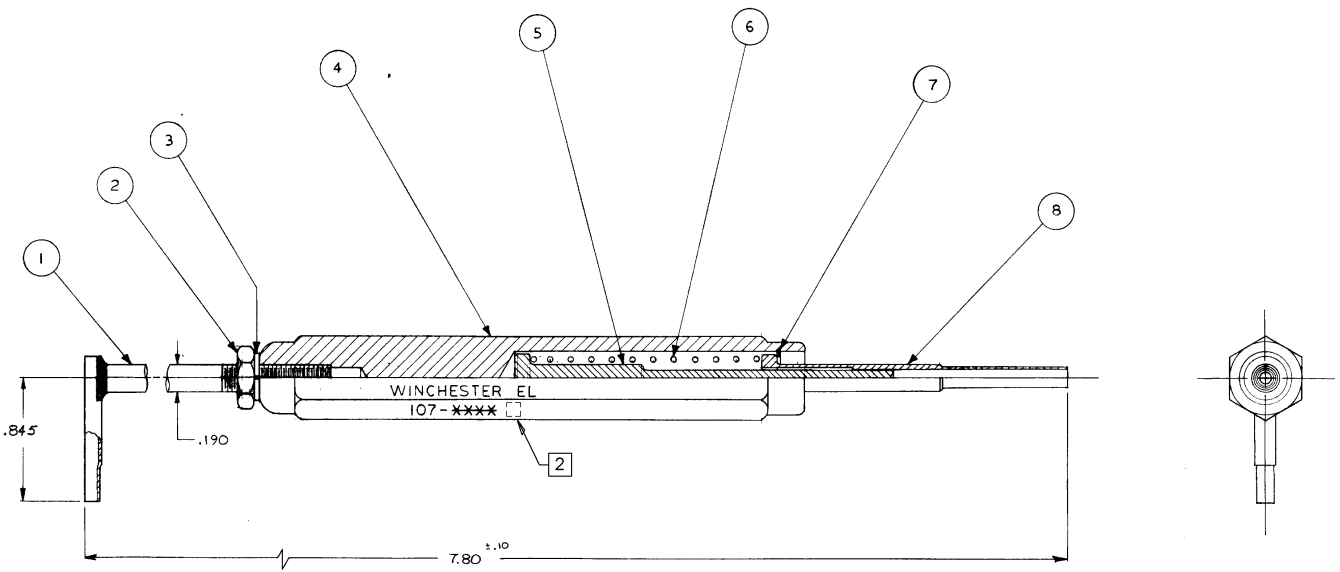


June 2006 - This drawing became the property of Winchester Electronics Corporation, Wallingford, CT.



NOTES:

- 1. PROTECTIVE COAT PER ES-71.
- 2. PERMANENTLY MARK TOOL WITH COMPLETE CATALOG NUMBER AND REVISION LEVEL OF TOOL AS SHOWN IN CHART. MARKING MUST BE LEGIBLE AND BE .09 MIN. HIGH LETTERING, LOCATED APPROXIMATELY AS SHOWN.

PARTS LIST				
ITEM	QTY	SIZE	PART NO.	DESCRIPTION
1	1	A	104330	INSERTION TOOL
2	1	A	104335	HEX NUT
3	1	A	104334	LOCKWASHER
4	1	A	104333	HANDLE
5	1	A	107-1419	KNOCKOUT PLUNGER
6	1	A	107-1423	SPRING
7	1	A	107-1403	RETAINING RING
8	1	A	107-1422	REMOVAL SPREAD TOOL

TOOL NUMBER	REV.
107-0215	B

REV.	DATE	BY	CHKD.	APP'D.	DESCRIPTION
A					WAS XCD 2032G S.A.P. M 0294 EN - 16937 R.W. MADE IN CHINA PARTS LIST - J.J.
B					REVISION PER ESR# 1028
C					

J.M.G. 02/17/04	
--------------------	--

REF: 093 CONTACT	3 TITLE SPRING LOADED CONTACT INSERTION & REMOVAL TOOL CAT. NO. 107-0215 SCALE 2:1 DATE 10-24-80 WINCHESTER ELECTRONICS DIVISION OF LITTON SYSTEMS INCORPORATED DANVILLE, CONNECTICUT DWA DATE 10276 REV. C
------------------	---

SCANNED