



RoHs/WEEE-Compliant SOIC-to-JEDEC TO Adapter

FEATURES

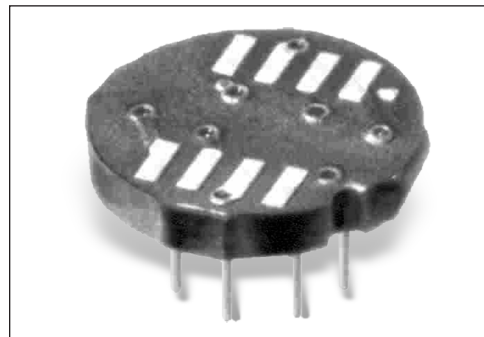
- Pb-Free RoHs/WEEE-compliant
- 8-position SOIC footprint on the top and a circular, 8-pin JEDEC TO can male pin footprint on the bottom. ICs now available only in 8-position SOIC packages can be readily mounted on boards having JEDEC TO thru-hole footprints without having to redesign the board.
- Consult factory for mounting of consigned chips.

GENERAL SPECIFICATIONS

- ADAPTER BOARD: 0.062 [1.58] thick FR-4 or IS410 per IPC 4101A/26 with 1-oz. Cu traces, both sides
- MALE PINS: Brass 360 1/2-hard per UNS C36000, ASTM B16/B16M
- MALE PIN PLATING: 10μ [0.254μ] min. Au per MIL-G-45204 over 100μ [2.54μ] Ni per SAE AMS-QQ-N-290
- OPERATING TEMPERATURE: 221°F [105°C]

MOUNTING CONSIDERATIONS

- SUGGESTED PCB HOLE SIZE: 0.028 ±0.003 [0.71 ±0.08] dia.



CUSTOMIZATION: In addition to the standard products shown on this page, Aries specializes in custom design and production. Special materials, platings, sizes, and configurations can be furnished, depending on the quantity. **NOTE:** Aries reserves the right to change product general specifications without notice.

ORDERING INFORMATION

P/N	Dim "C"
1109814-RC	0.200 [5.08]

ALL DIMENSIONS: INCHES [MILLIMETERS]

ALL TOLERANCES: ±0.005 [0.13] UNLESS OTHERWISE SPECIFIED

DIP-to-TO ADAPTER ALSO AVAILABLE. CONSULT **DATA SHEET 18012**

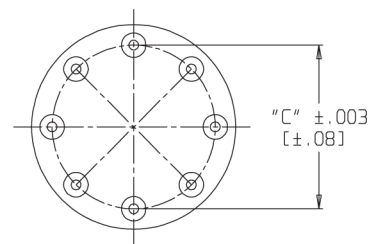
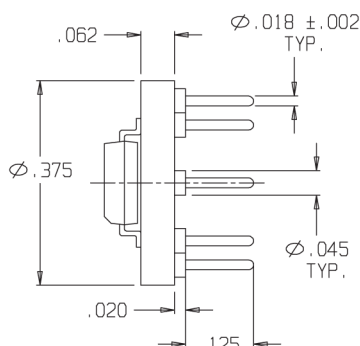
CONSULT FACTORY FOR OTHER SIZES AND CONFIGURATIONS

3 SPCS. @ .050 ±.003
=.150 ±.003
2 PLCS.

CTR. TO CTR.
OF PADS = .225

PADS ARE
.022 X .075

CUSTOMER SUPPLIED
8 LEAD SOIC
[MOUNTING OPTION SHOWN]



ARIES
ELECTRONICS, INC.

Bristol, PA 19007-6810 USA
TEL (215) 781-9956 • FAX (215) 781-9845
WWW.ARIESELEC.COM • INFO@ARIESELEC.COM



18013RC
Rev. AA

PRINTOUTS OF THIS DOCUMENT MAY BE OUT OF DATE AND SHOULD BE CONSIDERED UNCONTROLLED