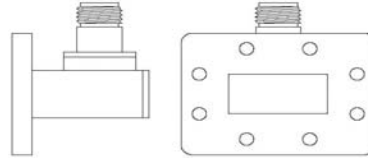


## Right Angle W/G to Coaxial Adapter

### Right Angle Waveguide to Coaxial Adapter



Standard Models						
P/N	Frequency Range (GHz)	Waveguide	VSWR	Flange	Connector	Material
975WCAN	0.75-1.12	WR975	1.25	FDP9	N-F	Al
770WCAN	0.96-1.45	WR770	1.25	FDP12	N-F	Al
650WCAN	1.12-1.70	WR650	1.25	FDP14/FDM14	N-F	Al
510WCAN	1.45-2.20	WR510	1.25	FDP18/FDM18	N-F	Al/Cu
430WCAN	1.70-2.60	WR430	1.25	FDP22/FDM22	N-F	Al/Cu
340WCAN	2.20-3.30	WR340	1.25	FDP26/FDM26	N-F	Al/Cu
284WCAN	2.60-3.95	WR284	1.25	FDP32/FDM32	N-F	Al/Cu
229WCAN	3.30-4.90	WR229	1.25	FDP40/FDM40	N-F	Al/Cu
187WCAN	3.95-5.85	WR187	1.25	FDP48/FDM48	N-F	Al/Cu
159WCAN	4.90-7.05	WR159	1.25	FDP58/FDM58	N-F	Al/Cu
137WCAN	5.85-8.20	WR137	1.25	FDP70/FDM70	N-F	Al/Cu
137WCAS	5.85-8.20	WR137	1.25	FDP70/FDM70	SMA-F	Al/Cu
112WCAN	7.05-10.0	WR112	1.25	FBP84/FBM84/FBE84	N-F	Al/Cu
112WCAS	7.05-10.0	WR112	1.25	FBP84/FBM84/FBE84	SMA-F	Al/Cu
90WCAN	8.20-12.4	WR90	1.25	FBP100/FBM100/FBE100	N-F	Al/Cu
90WCAS	8.20-12.4	WR90	1.25	FBP100/FBM100/FBE100	SMA-F	Al/Cu
75WCAN	10.0-15.0	WR75	1.25	FBP120/FBM120/FBE120	N-F	Al/Cu
75WCAS	10.0-15.0	WR75	1.25	FBP120/FBM120/FBE120	SMA-F	Al/Cu
62WCAS	12.4-18.0	WR62	1.25	FBP140/FBM140/FBE140	SMA-F	Al/Cu
51WCAS	15.0-22.0	WR51	1.25	FBP180/FBM180/FBE180	SMA-F	Al/Cu
42WCAS	18.0-26.5	WR42	1.30	FBP220/FBM220/FBE220	SMA-F	Al/Cu
34WCAS	22.0-33.0	WR34	1.50	FBP260/FBM260/FBE260	SMA-F	Al/Cu
28WCAK	26.5-40.0	WR28	1.50	FBP320/FBM320/FBE320	2.92K-F	Al/Cu
22WCA2.4	33.0-50.0	WR22	1.50	FUGP400	2.4mm-F	Cu
19WCAV	40.0-60.0	WR19	1.50	FUGP500	1.85mm-F	Cu

#### Ordering Information

P/N:

**229**

**WCAN**

WR Size

Product Code

**Example:** 229WCAN is a WR229 waveguide to coaxial adapter(N type Female connector).

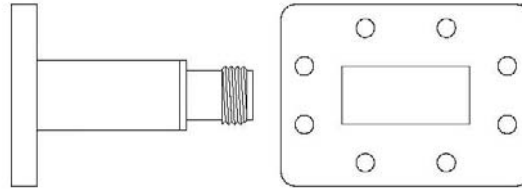
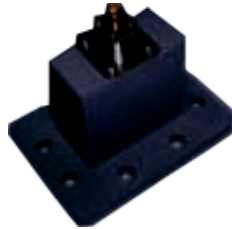
AAC manufactures wide variety of right angle waveguide to coaxial adapter assemblies specially designed for every customer's unique requirements. Right Angle Waveguide to Coaxial Adapter can be assembled with many types of flange. We also offer many other special configurations, length and whole size to meet special requirements.

Note: 1. Customization is available;

2. For detailed information of each right angle waveguide to coaxial adapter, please visit the website: [www.aacix.com](http://www.aacix.com).

## Endlaunch W/G to Coaxial Adapter

### Endlaunch Waveguide to Coaxial Adapter



Standard Models						
P/N	Frequency Range (GHz)	Waveguide	VSWR	Flange	Connector	Material
430WECAN	1.70-2.60	WR430	1.25	FDP22/FDM22	N-F	Al/Cu
340WECAN	2.20-3.30	WR340	1.25	FDP26/FDM26	N-F	Al/Cu
340WECAS	2.20-3.30	WR340	1.25	FDP26/FDM26	SMA-F	Al/Cu
284WECAN	2.60-3.95	WR284	1.25	FDP32/FDM32	N-F	Al/Cu
284WECAS	2.60-3.95	WR284	1.25	FDP32/FDM32	SMA-F	Al/Cu
229WECAN	3.30-4.90	WR229	1.25	FDP40/FDM40	N-F	Al/Cu
229WECAS	3.30-4.90	WR229	1.25	FDP40/FDM40	SMA-F	Al/Cu
187WECAN	3.95-5.85	WR187	1.25	FDP48/FDM48	N-F	Al/Cu
187WECAS	3.95-5.85	WR187	1.25	FDP48/FDM48	SMA-F	Al/Cu
159WECAN	4.90-7.05	WR159	1.25	FDP58/FDM58	N-F	Al/Cu
159WECAS	4.90-7.05	WR159	1.25	FDP58/FDM58	SMA-F	Al/Cu
137WECAN	5.85-8.20	WR137	1.25	FDP70/FDM70	N-F	Al/Cu
137WECAS	5.85-8.20	WR137	1.25	FDP70/FDM70	SMA-F	Al/Cu
112WECAN	7.05-10.0	WR112	1.25	FBP84/FBM84/FBE84	N-F	Al/Cu
112WECAS	7.05-10.0	WR112	1.25	FBP84/FBM84/FBE84	SMA-F	Al/Cu
90WECAN	8.20-12.4	WR90	1.25	FBP100/FBM100/FBE100	N-F	Al/Cu
90WECAS	8.20-12.4	WR90	1.25	FBP100/FBM100/FBE100	SMA-F	Al/Cu
75WECAN	10.0-15.0	WR75	1.25	FBP120/FBM120/FBE120	N-F	Al/Cu
75WECAS	10.0-15.0	WR75	1.25	FBP120/FBM120/FBE120	SMA-F	Al/Cu
62WECAN	12.4-18.0	WR62	1.25	FBP140/FBM140/FBE140	N-F	Al/Cu
62WECAS	12.4-18.0	WR62	1.25	FBP140/FBM140/FBE140	SMA-F	Al/Cu



## Endlaunch W/G to Coaxial Adapter

P/N	Frequency Range (GHz)	Waveguide	VSWR	Flange	Connector	Material
51WECAS	15.0-22.0	WR51	1.25	FBP180/FBM180/FBE180	SMA-F	Al/Cu
51WECAK	15.0-22.0	WR51	1.25	FBP180/FBM180/FBE180	2.92K-F	Al/Cu
42WECAS	18.0-26.5	WR42	1.50	FBP220/FBM220/FBE220	SMA-F	Al/Cu
42WECAK	18.0-26.5	WR42	1.50	FBP220/FBM220/FBE220	2.92K -F	Al/Cu
34WECAS	22.0-33.0	WR34	1.50	FBP260/FBM260/FBE260	SMA-F	Al/Cu
34WECAK	22.0-33.0	WR34	1.50	FBP260/FBM260/FBE260	2.92K -F	Al/Cu
28WECAK	26.5-40.0	WR28	1.50	FBP320/FBM320/FBE320	2.92K-F	Al/Cu
22WEC2.4	33.0-50.0	WR22	2.00	FUGP400	2.4mm-F	Cu
19WEC2.4	40.0-60.0	WR19	2.00	FUGP500	1.85mm-F	Cu
<b>Ordering Information</b>				<p>AAC manufactures wide variety of endlaunch waveguide to coaxial adapter assemblies specially designed for every customers unique requirements. Endlaunch Waveguide to Coaxial Adapter can be assembled with many types of flange. We also offer many other special configurations, length and hole size to meet special requirements.</p>		
<p><b>P/N:</b></p> <p style="text-align: center;"> <span style="margin-right: 20px;"><u>187</u></span> <span><u>WECAN</u></span>            WR            Product            Size            Code         </p> <p><b>Example:</b> 187WECAN is a WR187 endlaunch waveguide to coaxial adapter(N type Female connector).</p>						
<p>Note:</p> <ol style="list-style-type: none"> <li>1. Customization is available;</li> <li>2. For detailed information of each endlaunch waveguide to coaxial adapter, please visit the website: <a href="http://www.aacix.com">www.aacix.com</a>.</li> </ol>						

## Double Ridge W/G to Coaxial Adapter

### Double Ridge Waveguide to Coaxial Adapter



Standard Models				
P/N	Frequency Range (GHz)	Waveguide	VSWR	Connector
250DRWCAN	2.6-7.8	WRD250D30	1.50	N-F
350DRWCAN	3.5-8.2	WRD350D24	1.50	N-F
475DRWCAN	4.75-11.0	WRD475D24	1.50	N-F
500DRWCAS	5.0-18.0	WRD500D36	1.50	SMA-F
580DRWCAS	5.8-16.0	WRD580D28	1.50	SMA-F
650DRWCAS	6.5-18.0	WRD650D28	1.50	SMA-F
750DRWCAS	7.5-18.0	WRD750D24	1.60	SMA-F
700DRWCAS	7.0-18.5	WRD700D26	1.60	SMA-F
1100DRWCAK	11.0-26.5	WRD1100C24	1.80	2.92K-F
1800DRWCAK	18.0-40.0	WRD1800C24	1.80	2.92K-F

<p><b>Ordering Information</b></p> <p>P/N:</p> <p style="margin-left: 40px;"><b><u>250</u></b>    <b><u>DRWCAN</u></b></p> <p style="margin-left: 80px;">WR            Product</p> <p style="margin-left: 80px;">Size            Code</p> <p><b>Example:</b> 250DRWCAN is a WRD250D30 double ridge waveguide to coaxial adapter(N type Female connector).</p> <p>Note:</p> <ol style="list-style-type: none"> <li>1. Customization is available;</li> <li>2. For detailed information of each double ridge waveguide to coaxial adapter, please visit the website: <a href="http://www.aacix.com">www.aacix.com</a>.</li> </ol>	<p>AAC manufactures wide variety of double ridge waveguide to coaxial adapter assemblies specially designed for every customers unique requirements.</p> <p>Double Ridge Waveguide to Coaxial Adapter can be assembled with many types of flange. We also offer many other special configurations, length and hole size to meet special requirements.</p>
---	---

## High Power Double Ridge W/G to Coaxial Adapter

### High Power Double Ridge Waveguide to Coaxial Adapter



Standard Models					
P/N	Frequency Range (GHz)	Waveguide	VSWR	Connector	Average Power (W)
250DRWHPCAN	2.6-7.8	WRD250D30	1.50	N-F	10-300
350DRWHPCAN	3.5-8.2	WRD350D24	1.50	N-F	10-300
475DRWHPCAN	4.75-11.0	WRD475D24	1.50	N-F	10-300
500DRWHPCAS	5.0-18.0	WRD500D36	1.50	SMA-F	10-100
580DRWHPCAS	5.8-16.0	WRD580D28	1.50	SMA-F	10-100
650DRWHPCAS	6.5-18.0	WRD650D28	1.50	SMA-F	10-100
750DRWHPCAS	7.5-18.0	WRD750D24	1.60	SMA-F	10-100
700DRWHPCAS	7.0-18.5	WRD700D26	1.80	SMA-F	10-100
1100DRWHPCA	11.0-26.5	WRD1100C24	1.80	2.92K-F	10-30
1800DRWHPCA	18.0-40.0	WRD1800C24	2.0	2.92K-F	10-30

<p><b>Ordering Information</b></p> <p>P/N:</p> <p style="text-align: center;"><b><u>350</u></b>      <b><u>DRWHPCAN</u></b></p> <p style="text-align: center;">WR Size                  Product Code</p> <p><b>Example:</b> 350DRWHPCAN is a WRD350D24 high power double ridge waveguide to coaxial adapter (N type Female connector).</p> <p>Note:</p> <ol style="list-style-type: none"> <li>1. Customization is available;</li> <li>2. For detailed information of each high power double ridge waveguide to coaxial adapter, please visit the website: <a href="http://www.aacix.com">www.aacix.com</a>.</li> </ol>	<p>AAC manufactures wide variety of high power double ridge waveguide to coaxial adapter assemblies specially designed for every customer's unique requirements.</p> <p>High Power Double Ridge Waveguide to Coaxial Adapter can be assembled with many types of flange. We also offer many other special configurations, length and hole size to meet special requirements.</p>
---	--