

**PLEASE CHECK WWW.MOLEX.COM FOR LATEST PART INFORMATION**

**Part Number:** [0358190315](#)  
**Status:** **Active**  
**Description:** 6.35mm (.250") Tab Relay Housing, Female, 3 Circuits

**Documents:**

[Drawing \(PDF\)](#) [RoHS Certificate of Compliance \(PDF\)](#)  
[Product Specification PS-35270-001 \(PDF\)](#)

**General**

Product Family Crimp Housings  
Series [35819](#)  
Product Name N/A

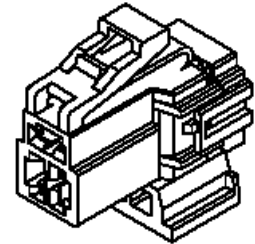
**Physical**

Circuits (maximum) 3  
Color - Resin Gray, Natural  
Gender Female  
Glow-Wire Compliant No  
Material - Resin Polyester  
Number of Rows 2  
Packaging Type Bag  
Panel Mount No  
Pitch - Mating Interface (in) 0.157 In, 0.276 In  
Pitch - Mating Interface (mm) 4.00 mm, 7.00 mm  
Stackable No  
Temperature Range - Operating -40°C to +80°C

**Material Info**

**Reference - Drawing Numbers**

Product Specification PS-35270-001  
Sales Drawing SD-35819-001



*image - Reference only*

*Series*

**EU RoHS**

**ELV and RoHS  
Compliant**

**REACH SVHC**

Not Reviewed

**Halogen-Free**

**Status**

**Halogen-Free**

**Need more information on product  
environmental compliance?**

Email [productcompliance@molex.com](mailto:productcompliance@molex.com)  
For a multiple part number RoHS Certificate of  
Compliance, [click here](#)

Please visit the [Contact Us](#) section for any  
non-product compliance questions.

**China RoHS**



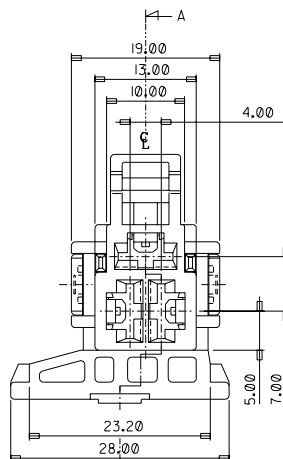
**Search Parts in this Series**

[35819Series](#)

**Use With**

[35427](#) , [35430](#)

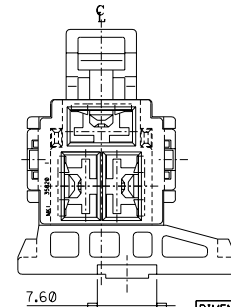
**PLEASE CHECK WWW.MOLEX.COM FOR LATEST PART INFORMATION**



Technical drawing of a mechanical assembly in cross-section. The drawing shows a shaft with a central hole, a flange, and a bearing. Dimensions are given in millimeters: 10.80, 8.00, 3.90, 8.30, and 12.20. Callouts 1 and 2 point to specific features.

1. MATERIAL: POLYESTER  
2. COLOR: SEE TABLE  
3. PRODUCT SPECIFICATION: PS 35270-0001  
4. APPLICABLE TERMINALS : SD35427-97\*\*,98\*\*,99\*\*  
SD35430-1700,1800,1900

NO.	PART NAME	PART NO.	FINISH
1	POWERMATE F/HSG 3P	SD35819-0395	D/GRAY
2	POWERMATE TPA 3P	SD35820-0380	NATURAL



REVISED	QUALITY SYMBOLS	GENERAL TOLERANCES (UNLESS SPECIFIED)	SCALE 2/1	DESIGN UNITS <input checked="" type="checkbox"/> mm <input type="checkbox"/> INCH	<input checked="" type="checkbox"/> THIRD ANGLE <input type="checkbox"/> PROJECTION	<input type="checkbox"/> mm INCH <input type="checkbox"/> INCH mm	<input checked="" type="checkbox"/> mm ONLY	REVISE ON CAD ONLY														
EC NO. KOR2082-0141 DRAWING NAME 02/06/07 CHKD-C.RHO APPRD.-W.LEE	MAJOR CRITICAL C	<table><tr><td></td><td>mm</td><td>INCH</td></tr><tr><td>4 PLACES</td><td>±0.</td><td>±.</td></tr><tr><td>3 PLACES</td><td>±0.</td><td>±.</td></tr><tr><td>2 PLACES</td><td>±0.2</td><td>±.</td></tr><tr><td>1 PLACE</td><td>±0.3</td><td>±.</td></tr></table>		mm	INCH	4 PLACES	±0.	±.	3 PLACES	±0.	±.	2 PLACES	±0.2	±.	1 PLACE	±0.3	±.	DRAWN BY & DATE '97.8.26 H.C.RHO CHECKED BY & DATE '97.8.26 B.K.CHOI APPROVED BY & DATE '97.8.26 C.W.LEE	TITLE: POWERMATE RLY FEMALE HSG ASS'Y 3P			
	mm	INCH																				
4 PLACES	±0.	±.																				
3 PLACES	±0.	±.																				
2 PLACES	±0.2	±.																				
1 PLACE	±0.3	±.																				
		ANGULAR: ±   °	CAD FILENAME SD35819	MATERIAL NO. SEE NOTE	DRAWING NO. SD35819-001	SHEET NO. 1 OF 1																
<input checked="" type="checkbox"/>	REV	DRAFT WHERE APPLICABLE MUST REMAIN WITHIN DIMENSIONS			THIS DRAWING CONTAINS INFORMATION THAT IS PROPRIETARY TO MOLEX INCORPORATED AND SHOULD NOT BE USED WITHOUT WRITTEN PERMISSION.			SIZE B														