

PLEASE CHECK WWW.MOLEX.COM FOR LATEST PART INFORMATION

Part Number: [0351910200](#)
Status: **Active**
Description: 7.92mm (.312") Pitch Housing: Positive Locking

Documents:

3D Model	Product Specification PS-35191-003 (PDF)
Drawing (PDF)	RoHS Certificate of Compliance (PDF)

Agency Certification

CSA	LR19980
TUV	R72081037
UL	E29179

General

Product Family	Crimp Housings
Series	35191
Product Name	N/A

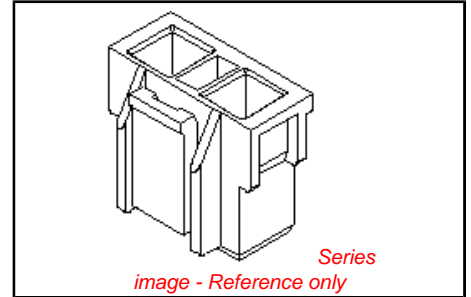
Physical

Circuits (maximum)	2
Color - Resin	Natural
Flammability	94V-0
Gender	Female
Glow-Wire Compliant	No
Material - Resin	Polyester
Number of Rows	1
Packaging Type	Bag
Panel Mount	No
Pitch - Mating Interface (in)	0.312 In
Pitch - Mating Interface (mm)	7.92 mm
Stackable	No
Temperature Range - Operating	-40°C to +105°C

Material Info

Reference - Drawing Numbers

Product Specification	PS-35191-003
Sales Drawing	SD-35191-0200



EU RoHS

ELV and RoHS Compliant
REACH SVHC
 Not Reviewed
Halogen-Free Status
 Not Reviewed

China RoHS



Need more information on product environmental compliance?

Email productcompliance@molex.com
 For a multiple part number RoHS Certificate of Compliance, [click here](#)

Please visit the [Contact Us](#) section for any non-product compliance questions.

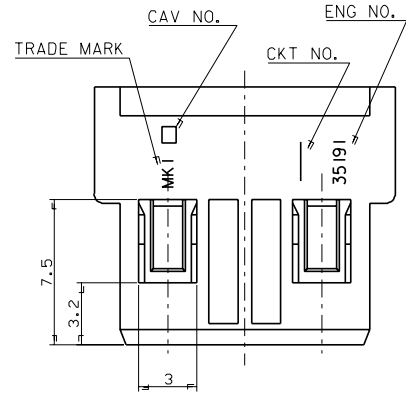
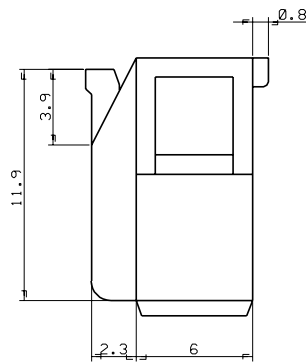
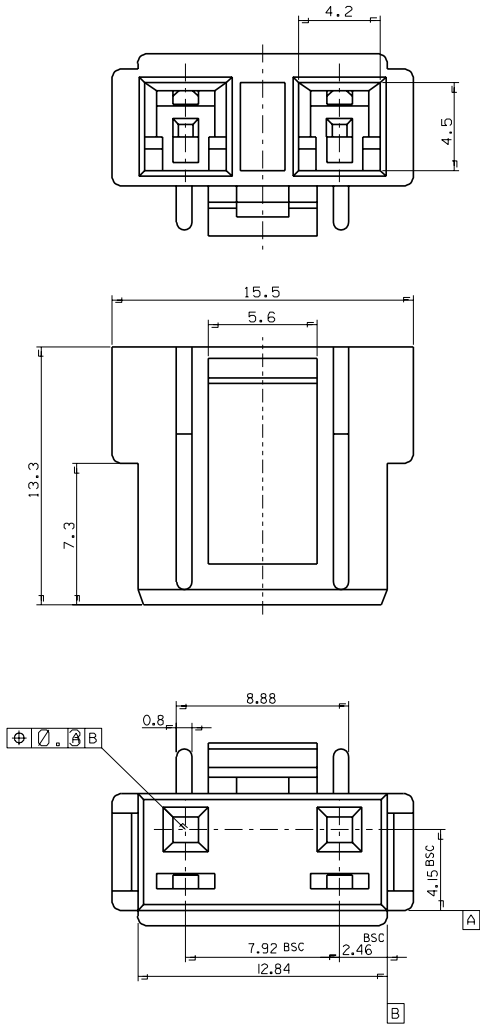
Search Parts in this Series
[35191Series](#)

Mates With
[35328-0210](#)

Use With
[35069](#)

PLEASE CHECK WWW.MOLEX.COM FOR LATEST PART INFORMATION

PROJECT NO. SIMILAR ITEM 35156 EDP NO. 35191-0200 ENG. NO. SD 35191-0200



NOTE

1. MATERIAL : PBT UL94V-0 , NATURAL
2. USED TERMINAL : 35069-000
3. MATED WAFER ASS'Y : 35328-0210

				MATERIAL PBT (UL94V-0)		molex MOLEX-KOREA CO.,LTD.	
				GENERAL TOLERANCE DIMENSION : +0.2		DRAWN BY H.S.SHIN	
				ANGLE : °		CHK'D BY	
				DIMENSION CLASSIFICATION ▽ : CRITICAL ▼ : MAJOR		SCALE 5-1	
				L1 : REFERENCE		TITLE 7.92 PITCH W/B CONN. POWER(2P) HOUSING	
A	NEW RELEASED	96-005	96	1/22	DESCRIPTION		SHEET 1/1
LTR	REVISION RECORD	ECN	DATE	ASS'Y PART		ENG. NO.	
REVISE ONLY ON CAD SYSTEM				DESCRIPTION		REV A	
				ENG. NO.		SD 35191-0200	

THIS DRAWING CONTAINS INFORMATION THAT IS PROPRIETARY TO MOLEX(KOREA) AND SHOULD NOT BE USED WITHOUT WRITTEN PERMISSION
MX-A3(ANSI:Z90,420)