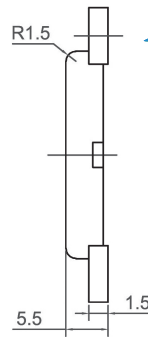
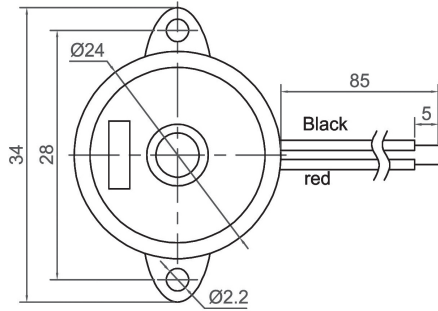
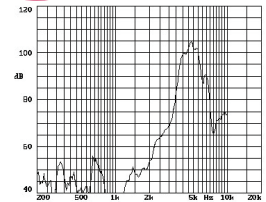


External Drive Piezo Transducer (AC)

CANOPUS



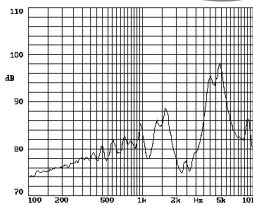
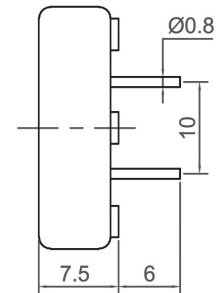
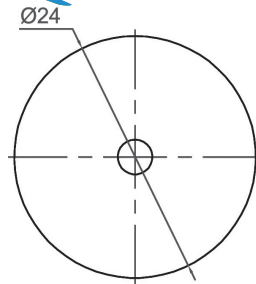
CPT2405



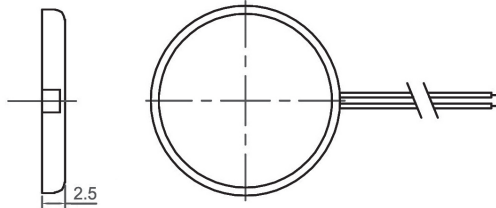
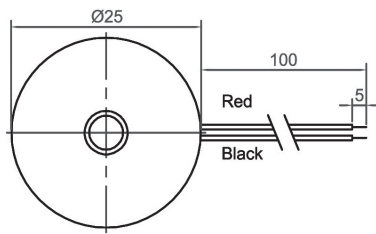
Canopus Part no.	Min sound Output (dBA)	Rated Voltage (V)	Max Input Voltage (V)	Resonant Frequency (Hz)	Capacitance (pF)	Operating Temperature (°C)	Housing	Weight (g)
CPT2405C30BW	85 AT 10cm	3 Vp-p	30 Vrms	3000	30000 ± 30% at 1000Hz	-20 ~ +70	ABS	5
CPT2405C40BW	80 AT 10cm	3 Vp-p	30 Vrms	4000	20000 ± 30% at 1000Hz	-20 ~ +70	ABS	5



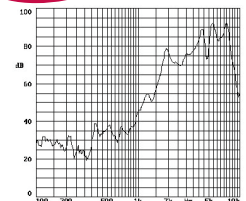
CPT2407



Canopus Part no.	Min sound Output (dBA)	Rated Voltage (V)	Max Input Voltage (V)	Resonant Frequency (Hz)	Capacitance (pF)	Operating Temperature (°C)	Housing	Weight (g)
CPT2407G40NP	85 AT 10cm	9 Vp-p	60 Vrms	4000	17000 ± 30% at 1000Hz	-20 ~ +60	Noryl	2



CPT2502



Canopus Part no.	Min sound Output (dBA)	Rated Voltage (V)	Max Input Voltage (V)	Resonant Frequency (Hz)	Capacitance (pF)	Operating Temperature (°C)	Housing	Weight (g)
CPT2502C20BW	70 AT 10cm	3 Vp-p	40 Vrms	2000	45000 ± 30% at 1000Hz	-20 ~ +70	ABS	5

Your Efficient Supplier
www.canopus.com.hk

TEL.: (852) 2806 2812

Fax: (852) 2652 2216