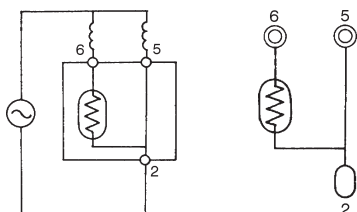


Max. Operating Voltage Vmax (V)	Resistance at 25°C R25 (Ω)	Max Operating Current Imax (A)	Max Power Consumption W (W)	Reference Temperature Tc (°C)	Part Number
160	3.3 \pm 25%	12	3.5	120	MSC** 3R3H16
180	4.7 \pm 25%	12	3.5	120	MSC** 4R7H18
200	6.8 \pm 25%	10	3.5	120	MSC** 6R8H20
225	10 \pm 25%	9	3.2	120	MSC** 100H22
250	15 \pm 25%	8	3.2	120	MSC** 150H25
300	22 \pm 25%	7	3.2	120	MSC** 220H30
355	33 \pm 25%	6	3.2	120	MSC** 330H35
400	47 \pm 25%	5	3.2	120	MSC** 470H40
410	100 \pm 25%	2.5	3.2	100	MSC** 101H41

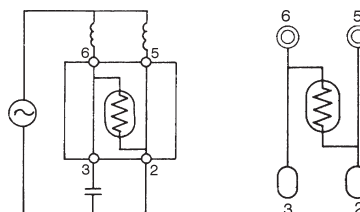
INTERNAL CIRCUIT DIAGRAMS

Note: To complete part numbers replace ** with correct type pinout.

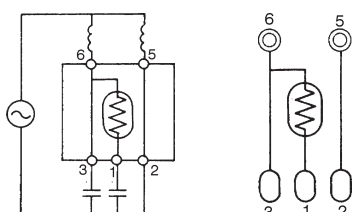
Type 1A Split Phase, Resistance Start



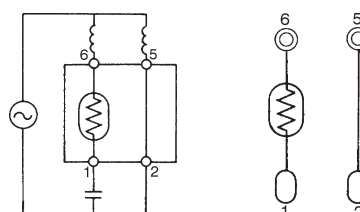
Type 2A Capacitance Run



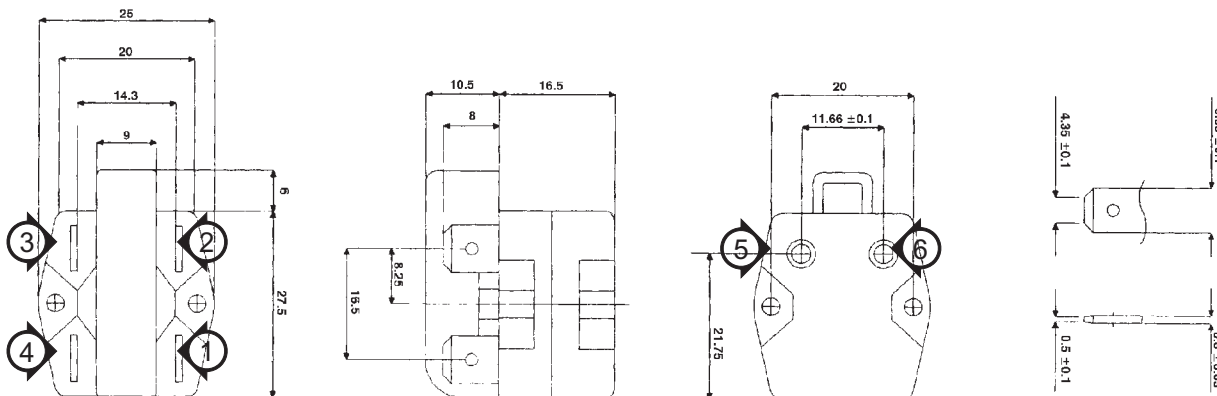
Type 3A Capacitance Start and Run



Type 2B Capacitance Start



FASTON AND PLUG TERMINAL LOCATIONS AND BODY DIMENSIONS



*Unused Faston terminals (1 through 4) shown on drawings are omitted.