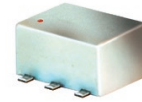


Directional Coupler

75Ω

5 to 1000 MHz

ADC-10-4-75R+



CASE STYLE: CD636
PRICE: \$7.95 ea. QTY (10-49)

+ RoHS compliant in accordance with EU Directive (2002/95/EC)

The +Suffix has been added in order to identify RoHS Compliance. See our web site for RoHS Compliance methodologies and qualifications.

Maximum Ratings

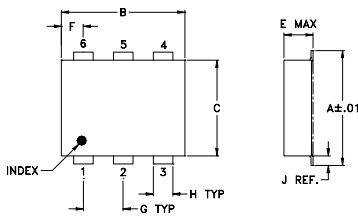
Operating Temperature	-40°C to 85°C
Storage Temperature	-55°C to 100°C

Permanent damage may occur if any of these limits are exceeded.

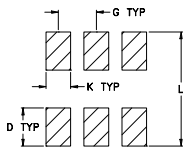
Pin Connections

INPUT	1
OUTPUT	6
COUPLED	3
GROUND	2,5
NOT USED	4

Outline Drawing



PCB Land Pattern

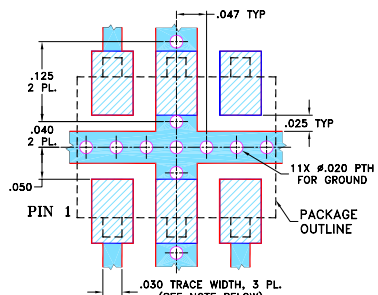


Suggested Layout, Tolerance to be within ±.002

Outline Dimensions (inch/mm)

A	B	C	D	E	F	G
.272	.310	.220	.100	.162	.055	.100
6.91	7.87	5.59	2.54	4.11	1.40	2.54
H	J	K	L	wt		
.030	.026	.065	.300	grams		
0.76	0.66	1.65	7.62	0.25		

Demo Board MCL P/N: TB-356 Suggested PCB Layout (PL-213)



- NOTES: 1. TRACE WIDTH IS SHOWN FOR ROGERS RO4350B WITH DIELECTRIC THICKNESS .030" ± .002"; COPPER: 1/2 OZ. EACH SIDE. FOR OTHER MATERIALS TRACE WIDTH MAY NEED TO BE MODIFIED.
2. BOTTOM SIDE OF THE PCB IS CONTINUOUS GROUND PLANE.
■ DENOTES PCB COPPER LAYOUT WITH SMOBS (SOLDER MASK OVER BARE COPPER)
■ DENOTES COPPER LAND PATTERN FREE OF SOLDER MASK

Features

- wideband, 5-1000 MHz
- good directivity, 20 dB typ.
- good VSWR, 1.2:1 typ.
- internal load, no external components required
- aqueous washable
- protected by US Patents 6,133,525 & 6,140,887

Applications

- CATV power tap

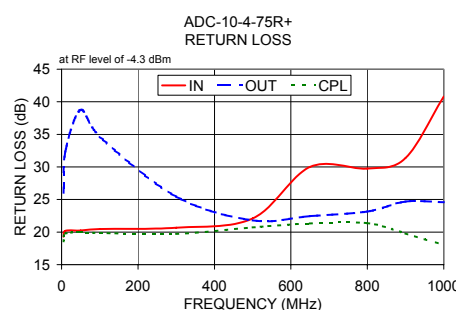
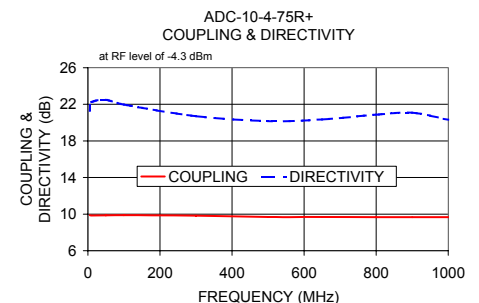
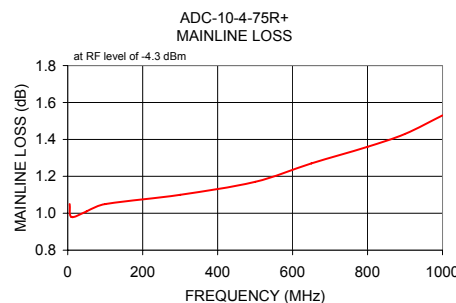
Directional Coupler Electrical Specifications

FREQ. (MHz)	COUPLING (dB)		MAINLINE LOSS ¹ (dB)			DIRECTIVITY (dB)			VSWR (:1)	POWER INPUT, W
	Nom.	Flatness	L	M	U	L	M	U		
f _L -f _U			Typ. Max.	Typ. Max.	Typ. Max.	Typ. Min.	Typ. Min.	Typ. Min.	Typ.	Max.
5-1000	9.6±0.5	±0.5	1.0 1.8	1.1 1.6	1.5 1.8	22 17	21 16	20 14	1.2	1.0

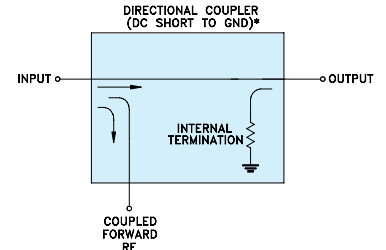
L= 5-50 MHz M= 50-500 MHz U= 500-1000 MHz
1. Mainline loss includes theoretical power loss at coupled port.

Typical Performance Data

Frequency (MHz)	Mainline Loss (dB)		Coupling (dB)	Directivity (dB)	Return Loss (dB)		
	In-Out	In-Cpl			In	Out	Cpl
5.00	1.05	9.88	21.29	19.29	26.04	18.58	
10.00	0.98	9.85	22.23	20.18	32.36	19.76	
50.00	1.01	9.86	22.50	20.25	38.76	19.95	
100.00	1.05	9.88	21.97	20.46	34.63	19.87	
300.00	1.10	9.83	20.70	20.68	25.43	19.72	
500.00	1.17	9.69	20.16	22.10	21.80	20.73	
650.00	1.27	9.69	20.34	30.01	22.46	21.32	
800.00	1.36	9.67	20.86	29.75	23.14	21.37	
900.00	1.43	9.67	21.08	31.38	24.67	19.79	
1000.00	1.53	9.67	20.31	40.80	24.59	18.03	



Electrical Schematic



* ELECTRICAL SCHEMATIC IS FOR DIRECTIONAL COUPLER WITH INTERNAL TRANSFORMER(S) THAT ROUTES DC FROM RF PORTS TO GROUND.



P.O. Box 350166, Brooklyn, New York 11235-0003 (718) 934-4500 Fax (718) 332-4661 For detailed performance specs & shopping online see Mini-Circuits web site



The Design Engineers Search Engine Provides ACTUAL Data Instantly From MINI-CIRCUITS At: www.minicircuits.com

IF/RF MICROWAVE COMPONENTS

REV. A
M119986
ED-12259/4
ADC-10-4-75R+
DY/LC/CP/AM
090313