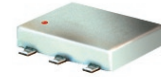


Surface Mount Directional Coupler

50Ω 5 to 1000 MHz

ADC-20-4+
ADC-20-4



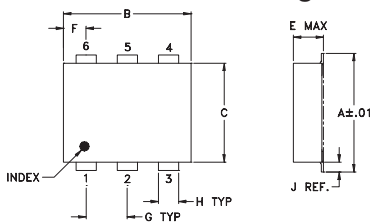
Maximum Ratings

Operating Temperature	-40°C to 85°C
Storage Temperature	-55°C to 100°C

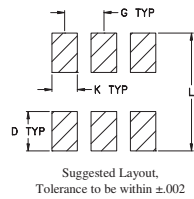
Pin Connections

INPUT	1
OUTPUT	6
COUPLED	3
GROUND	2
50Ω TERM EXTERNAL	4
ISOLATE (DO NOT USE)	5

Outline Drawing



PCB Land Pattern

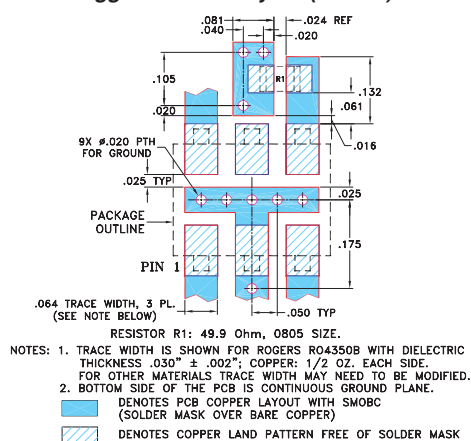


Outline Dimensions (inch/mm)

A	B	C	D	E	F	G
.272	.310	.220	.100	.112	.055	.100
6.91	7.87	5.59	2.54	2.84	1.40	2.54

H	J	K	L	wt
.030	.026	.065	.300	grams
0.76	0.66	1.65	7.62	0.20

Demo Board MCL P/N: TB-05 Suggested PCB Layout (PL-095)



Features

- wideband, 5-1000 MHz
- low mainline loss, 0.5 dB typ.
- high directivity, 21 dB typ.
- aqueous washable
- protected by U.S Patents 6,133,525 & 6,140,887

Applications

- cable tv
- communications

CASE STYLE: CD542

PRICE:\$6.95 ea. QTY (10-49)

+ RoHS compliant in accordance
with EU Directive (2002/95/EC)

The +Suffix identifies RoHS Compliance. See our web site for RoHS Compliance methodologies and qualifications.

Directional Coupler Electrical Specifications

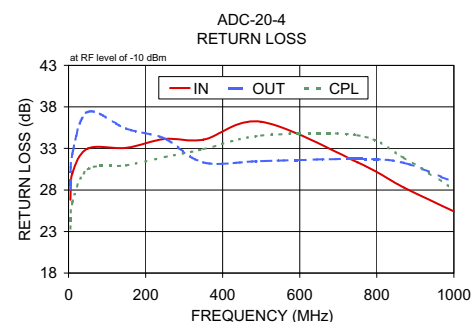
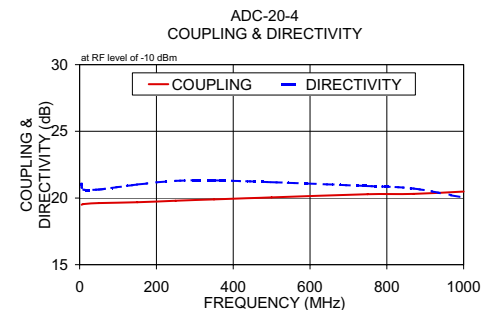
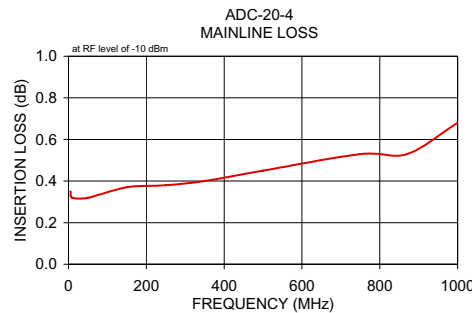
FREQ. (MHz)	COUPLING (dB)		MAINLINE LOSS ¹ (dB)			DIRECTIVITY (dB)			VSWR (:1)	POWER INPUT, W							
	Nom.	Flatness	L Typ.	M Typ.	U Typ.	L Typ.	M Typ.	U Typ.		L Max.	MU Max.						
f _c -f _u																	
5-1000	20.0±0.5	±0.8	0.4	0.8	0.5	1.0	0.7	1.3	20	18	21	17	21	15	1.1	1.0	1.0

L= 5-50 MHz M= 50-500 MHz U= 500-1000 MHz

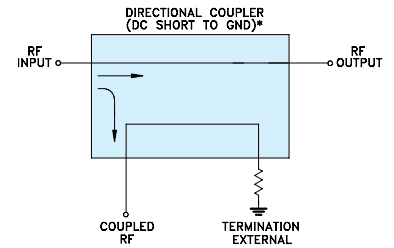
1. Mainline loss includes theoretical power loss at coupled port.

Typical Performance Data

Frequency (MHz)	Mainline Loss (dB) In-Out	Coupling (dB) In-Cpl	Directivity (dB)	Return Loss (dB)		
				In	Out	Cpl
5.00	0.35	19.49	21.07	26.82	28.08	23.37
10.00	0.32	19.55	20.63	30.04	32.37	26.49
50.00	0.32	19.62	20.64	32.99	37.40	30.48
150.00	0.37	19.68	21.01	33.06	35.38	30.96
250.00	0.38	19.80	21.28	34.14	34.19	31.95
350.00	0.40	19.89	21.32	34.05	31.30	32.90
500.00	0.45	20.05	21.18	36.20	31.48	34.55
750.00	0.53	20.28	20.90	31.32	31.73	34.59
870.00	0.53	20.31	20.71	28.29	31.27	31.88
1000.00	0.68	20.49	20.03	25.43	28.94	28.09



Electrical Schematic



* ELECTRICAL SCHEMATIC IS FOR DIRECTIONAL COUPLER WITH INTERNAL TRANSFORMER(S) AND EXTERNAL TERMINATION.

Mini-Circuits®
ISO 9001 ISO 14001 AS 9100 CERTIFIED

minicircuits.com

P.O. Box 350166, Brooklyn, New York 11235-0003 (718) 934-4500 Fax (718) 332-4661 For detailed performance specs & shopping online see Mini-Circuits web site



The Design Engineers Search Engine Provides ACTUAL Data Instantly From MINI-CIRCUITS At: www.minicircuits.com

IF/RF MICROWAVE COMPONENTS

REV. D
M119986
ED-6676/2
ADC-20-4
WZ/TD/CP/AM
081111