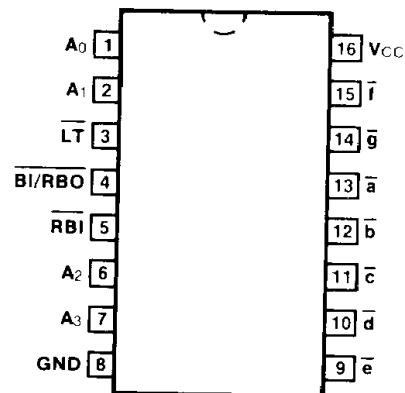


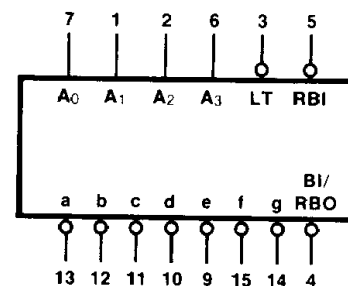
54LS/74LS347 ✓ 034690

BCD TO 7-SEGMENT DECODER/DRIVER

CONNECTION DIAGRAM PINOUT A



LOGIC SYMBOL



V_{CC} = Pin 16
GND = Pin 8

DESCRIPTION — The '347 is the same as the '47 except that the Output OFF Voltage, V_{OH}, is specified as 7.0 V rather than 15 V, with the same I_{OH} limit of 250 μA. For all other information please refer to the '47 data sheet.

ORDERING CODE: See Section 9

PKGS	PIN OUT	COMMERCIAL GRADE	MILITARY GRADE	PKG TYPE
		V _{CC} = +5.0 V ±5%, T _A = 0° C to +70° C	V _{CC} = +5.0 V ±10%, T _A = -55° C to +125° C	
Plastic DIP (P)	A	74LS347PC		9B
Ceramic DIP (D)	A	74LS347DC	54LS347DM	7B
Flatpak (F)	A	74LS347FC	54LS347FM	4L

INPUT LOADING/FAN-OUT: See Section 3 for U.L. definitions

PIN NAMES	DESCRIPTION	54/74LS HIGH/LOW
A ₀ — A ₃	BCD Inputs	
RBI	Ripple Blanking Input (Active LOW)	0.5/0.25
LT	Lamp Test Input (Active LOW)	0.5/0.25
BI/RBO	Blanking Input (Active LOW) or Ripple Blanking Output (Active LOW)	0.5/0.25 -/0.75 1.25/2.0
a — g	Segment Outputs (Active LOW)	(1.0) OC*/15 (7.5)

*OC — Open Collector