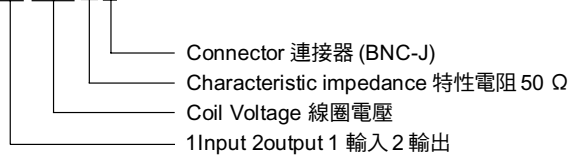


Part Number / Feature 品名 / 特長

• RFW - 12 * * A 4



- 1-input 2-outputs coaxial mercury relay, which are used mercury switches with high reliability and long-life expectancy. DC~1GHz frequency band is possible.

50 Ω impedance matching is realized. And it is most suitable to transfer high frequency circuit.

It can control a wide range power from a small to rated 10W.

- 使用高信賴、長壽命的水銀開關，屬於1輸入2輸出的同軸水銀繼電器，可用於DC~1GHz的高頻帶域。可實現50 Ω 匹配電阻，適用時高頻電路的切換。從微小電流到定格10W，皆能用於廣大範圍的控制。

Performance 性能

Specifications 規格	Item 項目	Standard 規格
Contact Specifications 接點規格	Contact Form 接點型式	1 Input 2 Output (mercury)
	Contact Rating 接點額定	10 W
	Max. Switching Voltage 最大切換電壓	DC.100V
	Max. Switching Current 最大切換電流	0.5 A
	Max. Carry Current 最大通電電流	1.0 A
Electrical Specifications 電氣規格	Contact Resistance 接點接觸阻抗	150m Ω MAX.
	Breakdown Voltage 耐電壓	Between contacts DC.150V Contacts to coil DC.150V Contacts to shield DC.150V Coil to shield DC.150V
	Insulation Resistance 絕緣阻抗	Between all isolated pins 5X10 ⁹ Ω MIN. (DC.100V)
	Thermal Electromotive Force 熱起電力	100μV Typ.
	Operate Time 動作時間	(1 Pulse) 1.7mS MAX. (at Nominal Voltage)
Mechanical Specifications 機械規格	Release Time 釋放時間	(1 Pulse) 1.5mS MAX. (at Nominal Voltage)
	Vibration 耐振動	20G (0~55Hz, 1.5mm)
Environmental 環境	Shock 耐衝擊	30G (11mS, 1/2 Sin Wave)
Life Expectancy 壽命	Operating Temperature 使用周圍溫度	-10°C ~ +60°C
	Mechanical 機械的	1 X10 ⁹ MIN. Operations
	Electrical 電氣的	DC.30V-30mA 5X10 ⁹ MIN. Operations (R.L.) DC.100V-0.1A 1X10 ⁹ MIN. Operations (R.L.)

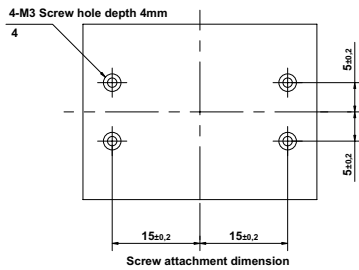
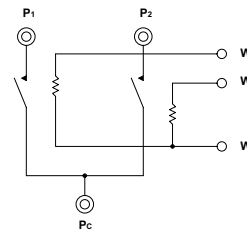
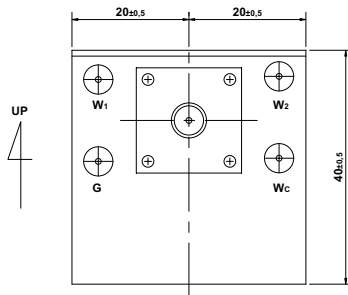
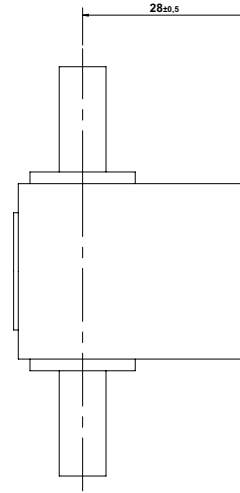
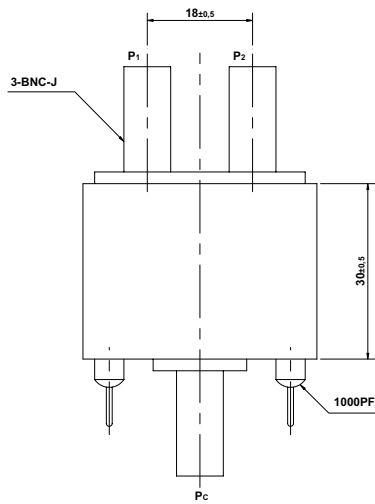
Coil Specifications 線圈規格

Part Number 品名	Nominal Voltage DC ± 10%[V] 額定電壓	Coil Resistance ± 10%[Ω] at 20°C 線圈阻抗	Nominal Current [mA] 額定電流	Must-Operate Voltage MAX.[V] at 20°C 啟動電壓
RFW-1212A4	12	300(相當於1 接點)	40.0(相當於1 接點)	9.0
RFW-1205A4	5	80(相當於1 接點)	62.5(相當於1 接點)	3.8

High Frequency Characteristic 高頻特性

Frequency Band 諧振頻率帶	DC.~1GHz
Input output Impedance 輸出輸入電阻	50 Ω
V.S.W.R	1.2 MAX.
Insertion Loss 插入損失	0.5dB MAX.
Isolation 隔離絕緣	60dB MIN. (DC.~1GHz)
	70dB MIN. (DC.~500MHz)

Dimensions / Terminal Identification (Unit: mm) 外型尺寸圖 / 結線圖 (單位: 毫米)



COIL - CONTACT(N.O)
 Wc - W1: Pc - P1
 Wc - W2: Pc - P2
 G: GUARD

Weight: about 150gr

備註：安裝時，UP 表示方向，
 並請於垂直 $\pm 30^\circ$ 範圍內裝置。

High Frequency Characteristic 高頻特性

(Refer page 11 for measuring method) (測試方法請參照第11頁)

