

# TC Series

## 50/60 Hz Industrial Current Transformer up to 600A

### Features

- For 50/60 Hz current, from 25 to 600 A nominal primary current.
- High number of secondary turns for a precise measurements of primary current.
- Low value for secondary currents, directly suitable for electronic circuit measurements.
- Cases made of UL94-VO material.
- Insulation prim/sec 4K Vac.
- Operating temperature from -40° to 70° C.



### Product List

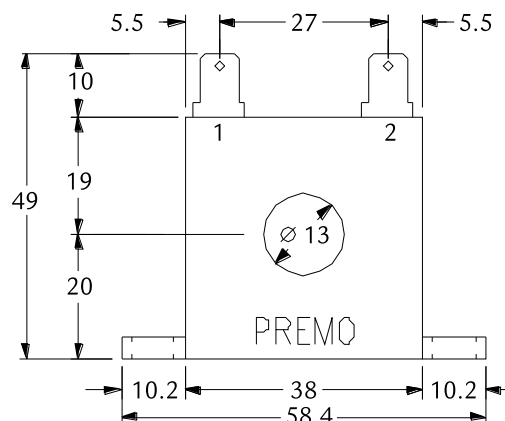
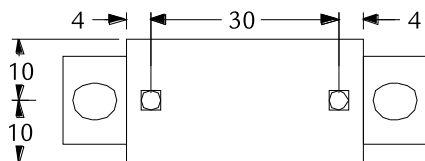
Part Number	$I_p/I_s$ (A)	$N_s$	$V_B$ (Vac)	$R_B$ ( $\Omega$ )	Accuracy	Case	Outputs	Diagram
TC-1012505	25 / 0.05	500	2	40	2%	A	1 - 2	1
TC-1015005	50 / 0.05	1000	4	80	1%	A	1 - 2	1
TC-2011002	100 / 0.2	500	4	20	1%	B	1 - 4	2
TC-2011001	100 / 0.1	1000	4	20	0.5%	B	1 - 4	2
TC-3014004	400 / 0.4	1000	8	20	0.5%	C	1 - 4	2
TC-3014002	400 / 0.2	2000	4	20	0.25%	C	1 - 4	2
TC-3016006	600 / 0.6	1000	6	10	0.25%	C	1 - 4	2
TC-3016002	600 / 0.2	3000	4	20	0.5%	C	1 - 4	2
	25 / 0.2	125	4	20	2.5%	B	1 - 2	3
TC-2031002	50 / 0.2	250	4	20	1.5%	B	1 - 3	3
	100 / 0.2	500	4	20	1%	B	1 - 4	3
	200 / 0.2	1000	4	20	0.5%	C	1 - 2	3
TC-3034002	300 / 0.2	1500	4	20	0.35%	C	1 - 3	3
	400 / 0.2	2000	4	20	0.25%	C	1 - 4	3
	200 / 0.4	500	8	20	1%	C	1 - 2	3
TC-3036004	400 / 0.4	1000	8	20	0.5%	C	1 - 3	3
	600 / 0.4	1500	8	20	0.25%	C	1 - 4	3

### Notes:

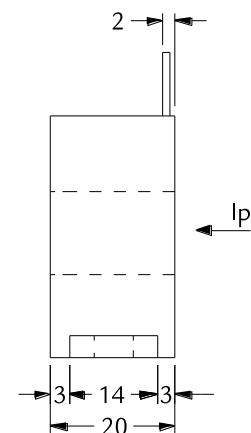
$I_p$ : Primary alternating current (rms)     $I_s$ : Secondary alternating current (rms)     $N_s$ : Secondary turns.  
 $V_B$ : Voltage in  $R_B$  (rms)     $R_B$ : Secondary load resistance.

### Dimensions

CASE A



CASE B

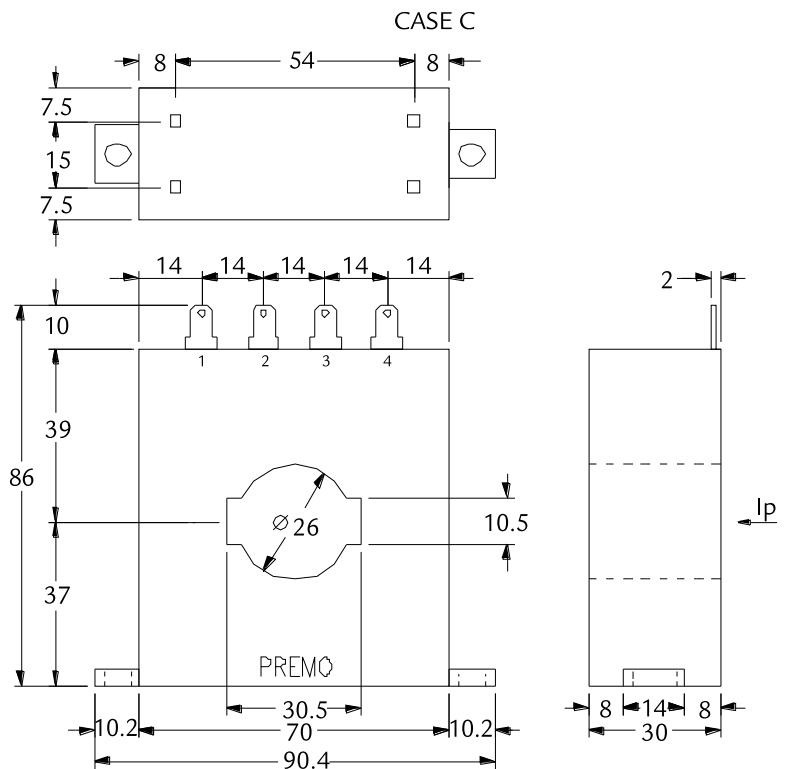
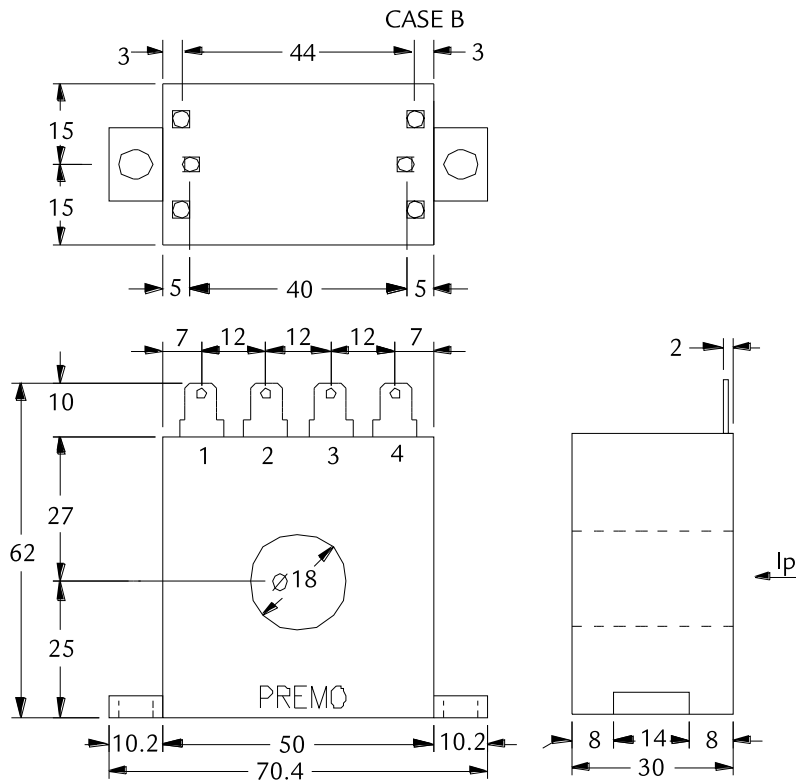


# TC Series

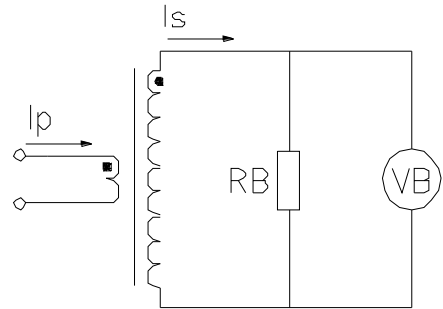
50/60 Hz Industrial Current Transformer up to 600A

Current Transformers & Sensors

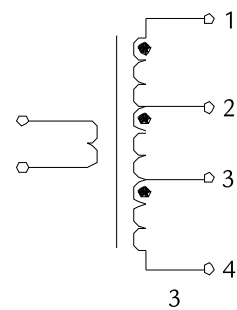
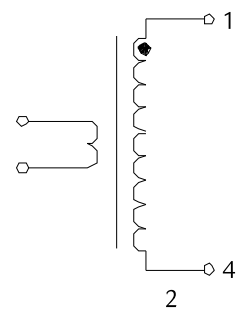
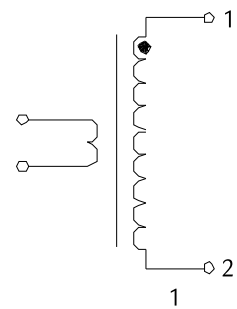
## Dimensions



## Test Circuit



## Electric Diagram



**FIXATION:**

Holes for self-tapping screws 2.9 x 9 or M4 screws and nuts.  
Dimensions in mm.  
Pin dimensions: 6.35 x 0.80 mm.