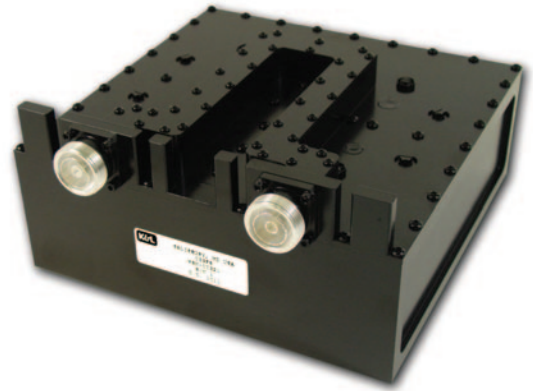


# WSN-00321 AMPS Interference Notch Filter

## ◆ Features:

- Narrowband notch has very high selectivity
- Low insertion loss
- High Power Handling
- Temperature stabilized – holds specifications at thermal extremes
- Dielectrically loaded waveguide elliptic design
- DC bypass

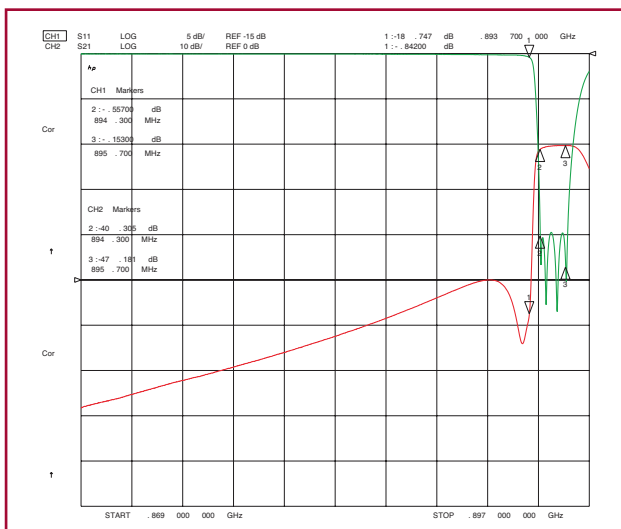


## ◆ Specifications:

Passband:	824 MHz to 893.7 MHz
Insertion Loss:	0.8 dB maximum
Return Loss:	15 dB minimum
Rejection:	40 dB minimum from 894.3 MHz to 895.7 MHz
Power:	200 W average / 5000 W peak
Temperature:	-10° C to +55° C
Size:	9" X 9" X 4"
Connectors:	7-16

## ◆ Applications:

- Direct add-on between base station and tower top amplifier/antenna
- Passes full AMPS band and provides 40 dB rejection from 894.3 MHz to 895.7 MHz



Lowpass to 3 GHz

Filtering Solutions for Your Global Market



**USA**  
Phone: 410-749-2424  
FAX: 443-260-2268  
Email: sales@klmicrowave.com

**EUROPE**  
Phone: +44-(0)-1603-723376  
FAX: +44-(0)-1603-723379  
Email: sales@kleurope.com

[www.klfilterwizard.com](http://www.klfilterwizard.com) & [www.klmicrowave.com](http://www.klmicrowave.com)