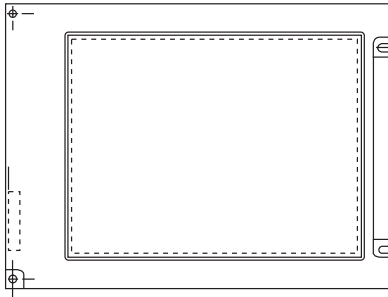


320 x 240 Character LCD



FEATURES

- Color R, G, B LCD type
- 320 RGB x 240 dots
- 8 bit data bus
- Built-in white backlight (CCFL)
- + 3 ~+ 5V power supply
- 1/240 duty cycle

MECHANICAL DATA		
ITEM	STANDARD VALUE	UNIT
Module Dimension	154.6 x 114.8 x 8.5	mm
Viewing Area	118.18 x 89.38	mm
Dot Size	0.09 x 0.33	mm
Character Size	0.12 x 0.36	mm

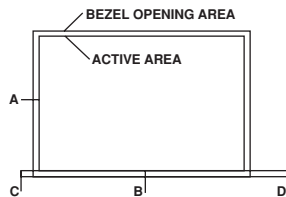
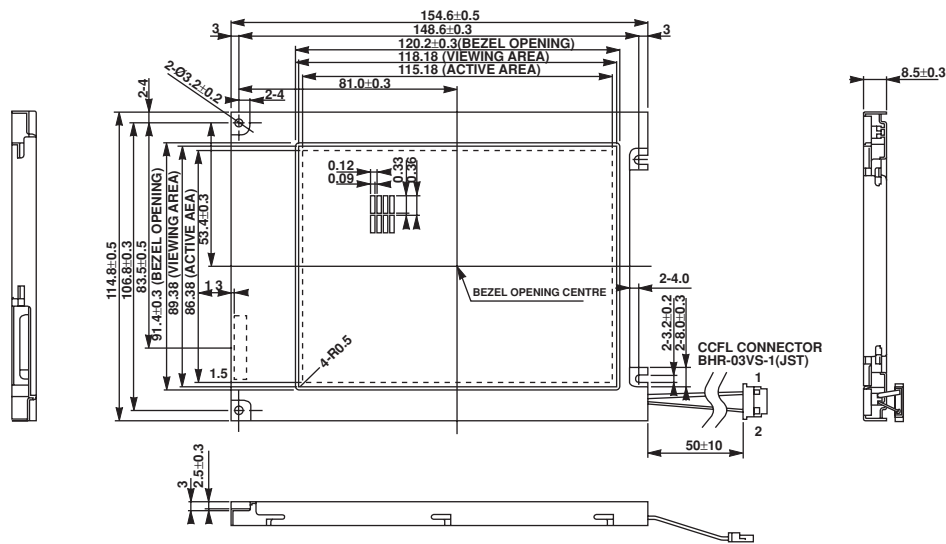
ABSOLUTE MAXIMUM RATING					
ITEM	SYMBOL	STANDARD VALUE			UNIT
		MIN.	TYP.	MAX.	
Power Supply	VDD-VSS	2.7	3.0	3.3	V
		4.7	5.0	5.3	V
Input Voltage	VI	0.8V _{DD}	–	VDD	V

NOTE: VSS = 0 Volt, VDD = 5.0 Volt

ELECTRICAL SPECIFICATIONS						
ITEM	SYMBOL	CONDITION	STANDARD VALUE			UNIT
			MIN.	TYP.	MAX.	
Input Voltage	VDD	L level	0.8V _{DD}	–	V _{DD}	V
	VIO	H level	V _{SS}	–	0.2V _{DD}	V
Supply Current	IDD	VDD = + 5V	–	–	–	mA
Recommended LC Driving Voltage for Normal Temp.	VDD - V0	0°C	–	–	–	V
		25°C	–	26.2	–	
		50°C	–	–	–	
Power Consumption	–	VDD = + 5V	–	2.0	–	mA
	–	VEE = + 26.2V	–	2.0	–	mA

PIN NUMBER	SYMBOL	FUNCTION
1	FRM	Scan Start-up Signal
2	LOAD	Data Latch
3	CP	Data Shift
4	DISP	Display Enable Signal
5	VDD	Power Supply Logic
6	VSS	Ground
7	VEE	Power Supply For LCD
8	DB7	Display Data Bus
9	DB6	Display Data Bus
10	DB5	Display Data Bus
11	DB4	Display Data Bus
12	DB3	Display Data Bus
13	DB2	Display Data Bus
14	DB1	Display Data Bus
15	DB0	Display Data Bus

DIMENSIONS in millimeters



- 1> TOLERANCE X-DIRECTION A=2.51 ±0.6
- 2> TOLERANCE Y-DIRECTION B=2.51 ±0.6
- 3> OBLIQUITY OF DISPLAY AREA (C-D) ±0.6



Notice

Specifications of the products displayed herein are subject to change without notice. Vishay Intertechnology, Inc., or anyone on its behalf, assumes no responsibility or liability for any errors or inaccuracies.

Information contained herein is intended to provide a product description only. No license, express or implied, by estoppel or otherwise, to any intellectual property rights is granted by this document. Except as provided in Vishay's terms and conditions of sale for such products, Vishay assumes no liability whatsoever, and disclaims any express or implied warranty, relating to sale and/or use of Vishay products including liability or warranties relating to fitness for a particular purpose, merchantability, or infringement of any patent, copyright, or other intellectual property right.

The products shown herein are not designed for use in medical, life-saving, or life-sustaining applications. Customers using or selling these products for use in such applications do so at their own risk and agree to fully indemnify Vishay for any damages resulting from such improper use or sale.