

## KVR400D2D8R3/1G

### 1GB 128M x 72-Bit DDR2-400

### CL3 Registered 240-Pin ECC DIMM

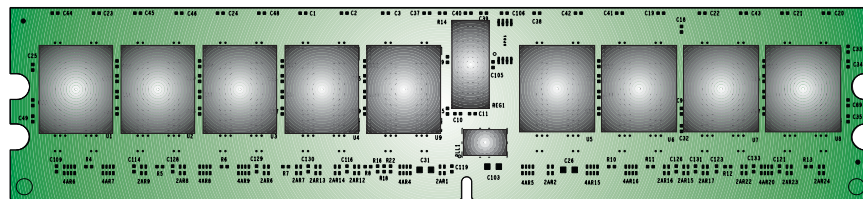
#### DESCRIPTION:

This document describes Kingston's 128M x 72-bit (1GB) DDR2-400 CL3 SDRAM (Synchronous **DRAM**) dual rank registered ECC memory module. The components on this module include eighteen 64M x 8-bit (16M x 8-bit x 4 Bank) DDR2-400 SDRAM in FBGA packages. This 240-pin DIMM uses gold contact fingers and requires +1.8V. The electrical and mechanical specifications are as follows:

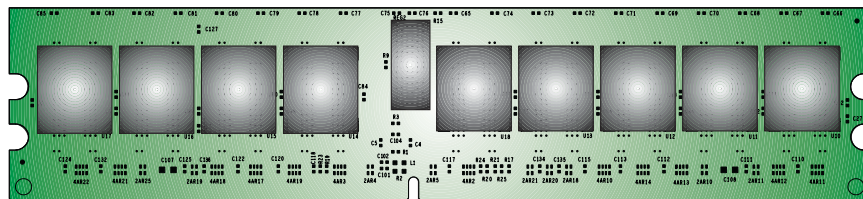
#### FEATURES:

✓ Clock Cycle Time (tCK) CL=3	5ns (min.) / 8ns (max.)
✓ Row Cycle Time (tRC)	55ns (min.)
✓ Refresh to Active/Refresh Command Time (tRFC)	105ns
✓ Row Active Time (tRAS)	40ns (min.) / 70,000ns (max.)
✓ Single Power Supply of	+1.8V (+/- .1V)
✓ Power	2.997 W (operating)
✓ UL Rating	94 V - 0

**Note:** The module defined in this data sheet is one of several configurations available under this part number. While all configurations are compatible, the DRAM combination and/or the module height may vary from what is described here. However, in no configuration will the module height exceed 1.250" (31.75mm).



COMP SIDE



SOLDER SIDE - MIRRORED

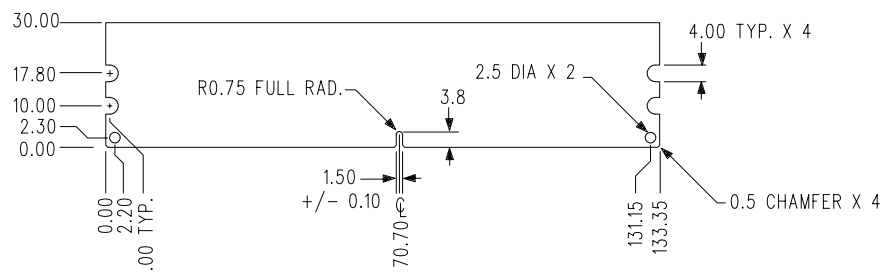


Figure 1: KVR400D2D8R3/1G 240-Pin DIMM