

KVR667D2D4P5/2GI

2GB 256M x 72-Bit DDR2-667

CL5 Registered w/Parity 240-Pin DIMM

DESCRIPTION:

This document describes ValueRAM's 256M x 72-bit 2GB (2048MB) DDR2-667 CL5 SDRAM (Synchronous **DRAM**) "dual rank" Registered w/Parity "Intel certified" memory module. The components on this module include thirty-six 128M x 4-bit DDR2-667 SDRAM in FBGA packages. This 240-pin DIMM uses gold contact fingers and requires +1.8V. The electrical and mechanical specifications are as follows:

FEATURES:

✓ Clock Cycle Time (tCK) CL=5	3ns (min.) / 8ns (max.)
✓ Row Cycle Time (tRC)	54ns (min.)
✓ Refresh to Active/Refresh Command Time (tRFC)	105ns
✓ Row Active Time (tRAS)	39ns (min.) / 70,000ns (max.)
✓ Single Power Supply of	+1.8V (+/- .1V)
✓ Power	5.616 W (operating)
✓ UL Rating	94 V - 0

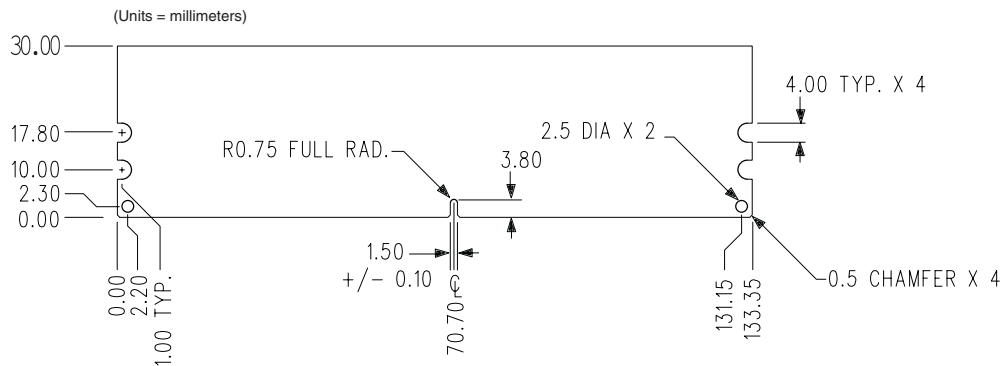
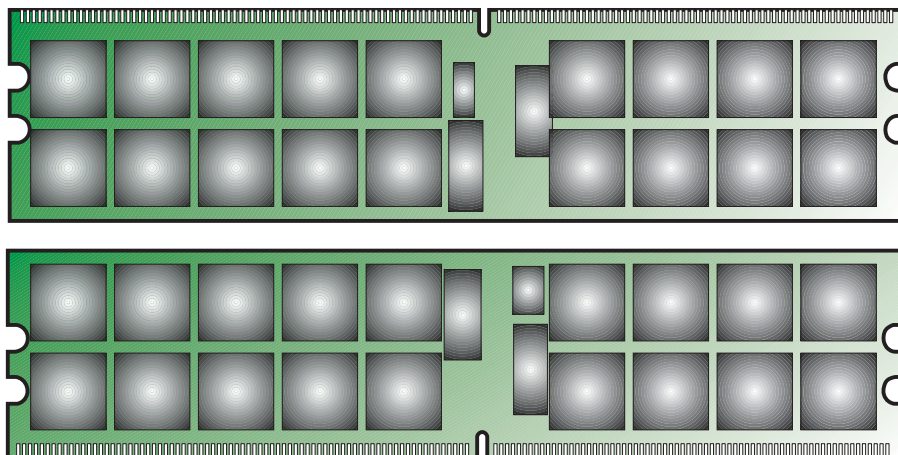


Figure 1: KVR667D2D4P5/2GI 240-Pin DIMM