



Micro Commercial Components

Micro Commercial Components
 20736 Marilla Street Chatsworth
 CA 91311
 Phone: (818) 701-4933
 Fax: (818) 701-4939

Features

- Low Leakage and Low Forward Voltage
- Mounting position: Any
- Surge overload rating: 200 amperes peak
- Silver-plated copper leads
- UL Recognized File # E165989
- Case Material: Molded Plastic. UL Flammability Classification Rating 94V-0 and MSL Rating 1
- Lead Free Finish/RoHS Compliant (NOTE 1) ("P" Suffix designates RoHS Compliant. See ordering information)

Maximum Ratings

- Operating Temperature: -55°C to +150°C
- Storage Temperature: -55°C to +150°C
- Typical Thermal Resistance: 26°C/W Junction to Ambient
- Typical Thermal Resistance: 2.3°C/W Junction to Case
- Typical Thermal Resistance: 6°C/W Junction to Lead

Microsemi Catalog Number	Device Marking	Maximum Recurrent Peak Reverse Voltage	Maximum RMS Voltage	Maximum DC Blocking Voltage
RS1001M	RS1001M	50V	35V	50V
RS1002M	RS1002M	100V	70V	100V
RS1003M	RS1003M	200V	140V	200V
RS1004M	RS1004M	400V	280V	400V
RS1005M	RS1005M	600V	420V	600V
RS1006M	RS1006M	800V	560V	800V
RS1007M	RS1007M	1000V	700V	1000V

Electrical Characteristics @ 25°C Unless Otherwise Specified

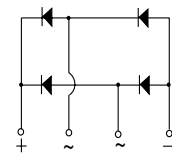
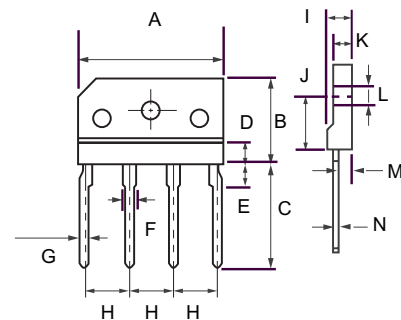
Average Forward Current	$I_{F(AV)}$	10 A	$T_C = 100^\circ\text{C}$
Peak Forward Surge Current	I_{FSM}	200 A	8.3ms, half sine
Maximum Forward Voltage Drop Per Element	V_F	1.1V	$I_{FM} = 5.0\text{A};$ $T_A = 25^\circ\text{C}$ (Note 2)
Maximum DC Reverse Current At Rated DC Blocking Voltage	I_R	5.0 μA 0.2 mA	$T_A = 25^\circ\text{C}$ $T_C = 100^\circ\text{C}$

- Notes: 1. High Temperature Solder Exemption Applied, see EU Directive Annex Notes 7
 2. Pulse Test: Pulse Width 300usec, Duty Cycle 1%

RS1001M THRU RS1007M

10 Amp Single Phase Silicon Bridge Rectifier 50 to 1000 Volts

RS-10M

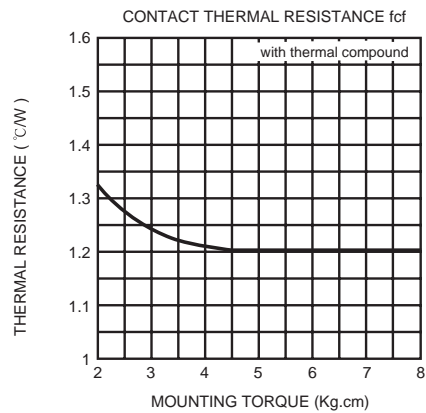
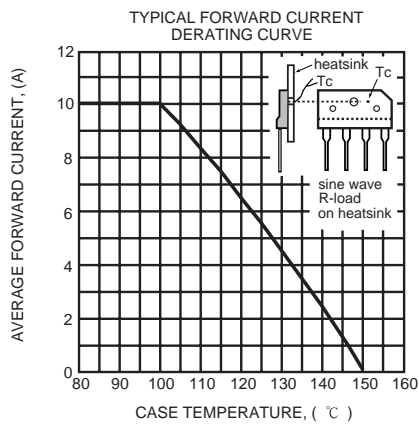
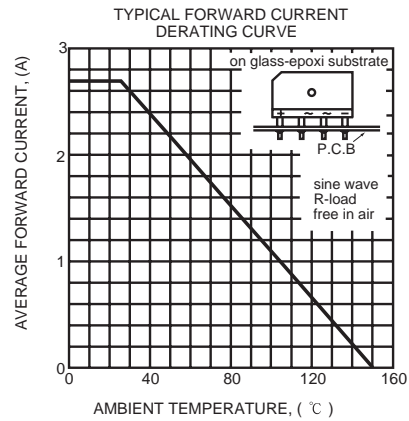
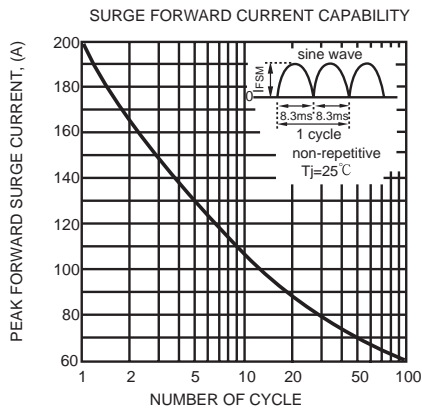
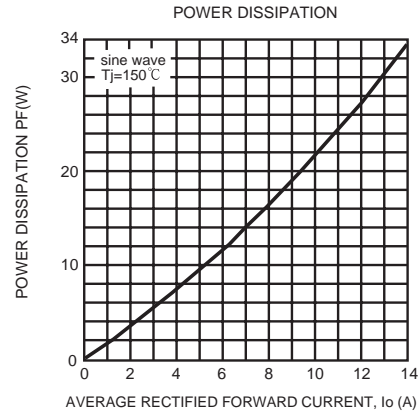
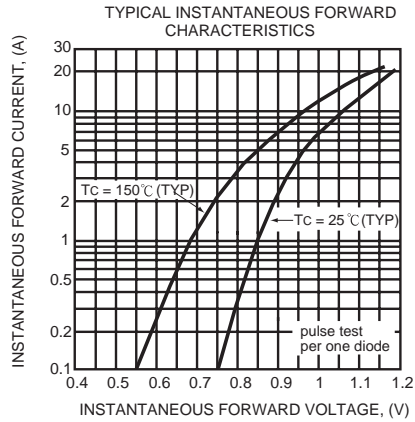


Case Type

DIM	DIMENSIONS				NOTE
	INCHES		MM		
	MIN	MAX	MIN	MAX	
A	.983	.995	24.70	25.30	
B	.578	.602	14.70	15.30	
C	.669	.708	17.00	17.00	
D	.157		4.00		
E	.130	.146	3.30	3.70	
F	.059	.074	1.50	1.90	
G	.035	.043	0.90	1.10	
H	.287	.303	7.30	7.70	
I	.173	.189	4.40	4.80	
J	.366	.382	9.30	9.70	
K	.134	.150	3.40	3.80	
L	.122	.134	3.10	3.40	
M	.098	.114	2.50	2.90	
N	.023	.031	0.60	0.80	

www.mccsemi.com

RS1001M THRU RS1007M





Micro Commercial Components

Ordering Information

Device	Packing
(Part Number)-BP	Bulk;15pcs/Tube

*****IMPORTANT NOTICE*****

Micro Commercial Components Corp .reserves the right to make changes without further notice to any product herein to make corrections, modifications , enhancements , improvements , or other changes .
Micro Commercial Components Corp . does not assume any liability arising out of the application or use of any product described herein; neither does it convey any license under its patent rights ,nor the rights of others . The user of products in such applications shall assume all risks of such use and will agree to hold *Micro Commercial Components Corp* .and all the companies whose products are represented on our website, harmless against all damages.

*****APPLICATIONS DISCLAIMER*****

Products offer by *Micro Commercial Components Corp* . are not intended for use in Medical, Aerospace or Military Applications.

www.mccsemi.com