

BI3101A

Data Sheet

BI3101A

Dual PWM CCFL Controller

Version : 1.1

Notice

All information contained in this document is subject to change without notice.

No part of this document may be copied or reproduced in any form or by any means without the prior written consent of Beyond Innovation Technology Co., Ltd.

PIN ASSIGMENT:

INPUT: CN1
 MODEL NO: S5B-PH-SM
 SUPPLIER: JST

PIN	SYMBOL	REMARK
1	VIN	11V-13V
2	GND	
3	VRMT	ON/5V OFF/0V
4	VBR	0V(Brightest)

*PIN 5NC

OUTPUT: CN3,4 This type be use at Lv-1801-A

MODEL: SM02B-BHSS-1-TB * SM04(4.0)BHS-1-TB

SUPPLIER: JST ,FCN

→ SM02B-BHSS-1-TB

PIN	SYMBOL	REMARK
1	HIGHT	HIGH VOLTAGE
2	LOW	LOW VOLTAGE

SM04(4.0)BHS-1-TB

PIN	SYMBOL	REMARK
1,2	HIGHT	HIGH VOLTAGE
4	LOW	LOW VOLTAGE

Note: V H. and V L. must connect correctly, If you make a mistake to connect you will get Hurt and module will be break

ELETRICAL CHARACTERISTICS

ITEMS	SYMBOL	MIN	TYP	MAX	UNIT	RE. MARK
Input v	Vin	10.8	12	13.2	V	
Input C	I in	1500	1800	2200	MA	
Frequency	F	40	50	65	KHz	
OUTPU C (2 Lamps)	I out		13	15	MA	Brightness max.
Open V	V open	1000	1300	1600	Vrms	
Output V	V out		680	760	Vrms	

RELIABILITY TEST

FOLLOWING TEST ITEMS ARE ASSURED

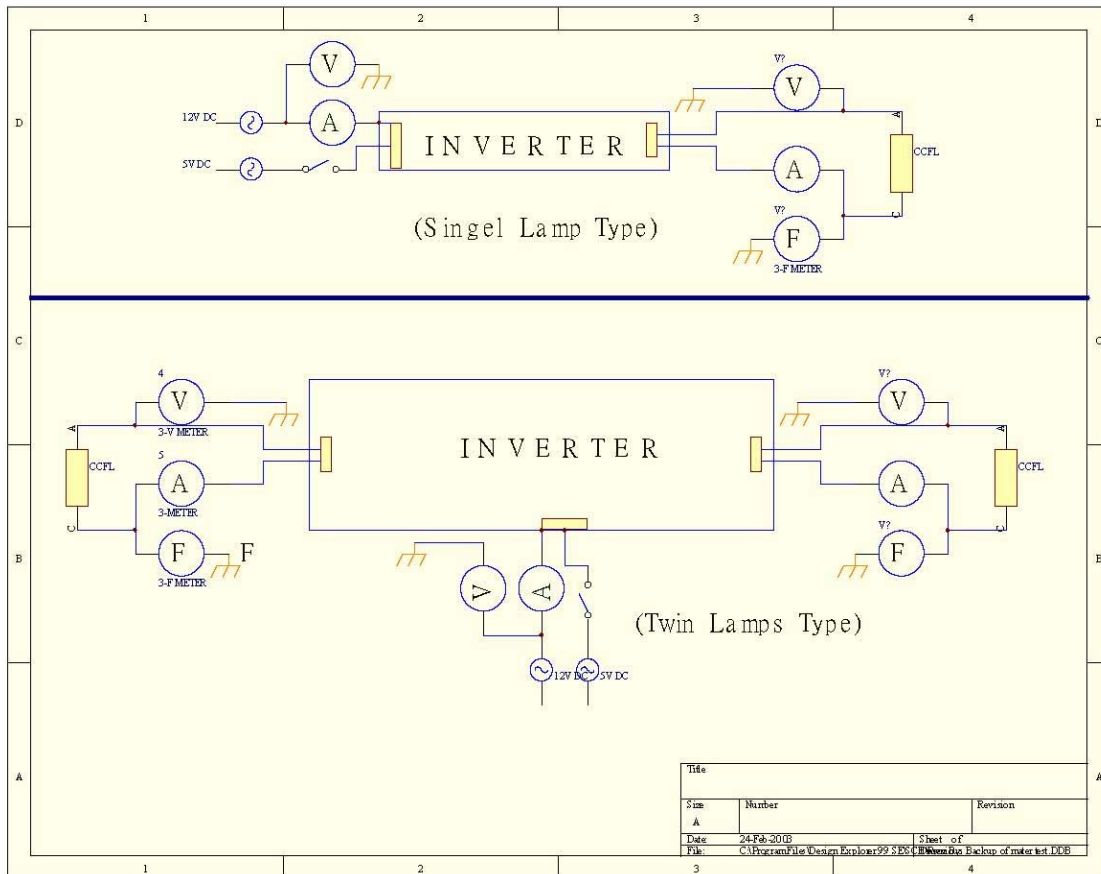
Items	Conditions	Judgment
Low temp. Storage 3	-30°C 500h	Electric & appearance should be in the spec. *See next table
Low temp. operating	0°C 500h	
High temp. storage	85°C 500h	
High temp. operating ***	58°C 1000h	
Temp. cycles	-30°C ---80°C 30min Each 100 cycles	
Humidity operating.	50°C 90-95%RH 500h	
Vibration	X. Y. Z. 30min. Each	
Mechanical shock	100G 6ms Half Sinusoid wave x. y. z. 3 Times Per Each	

High temperature operating function inspection:

Test one Time/10 Hours each

Item	Temperature	Conclusion	Dynamic testing
ON&OFF	50°C	OK	1200 Times continue
Noise	50°C	OK	Vin low noise also
P.W.M.	50°C	OK	Include brightness adjust
I in	50°C	OK	-----
Frequency	50°C	OK	-----
Sinusoid wave	50°C	OK	AC in & out
Brightness control	50°C	OK	Without flash

Test Circuit



LV-1702-A Outline dimension
Unit mm
Hole 3.2mmX2

