

SKY65338: 450-470 MHz Transmit/Receive Front-End Module

Applications

- Tetra radio
- Remote metering
- GSM
- WLL transmitters

Features

- Transmit output power > +25 dBm
- High gain in transmit path: 32 dB
- High transmit/receive isolation > 30 dB
- Internal RF match and bias circuits
- All RF ports internally DC blocked
- Single DC supply = +3.6 V
- Small footprint, MCM (12-pin, 8 x 8 mm) Pb-free (MSL3, 260 °C per JEDEC J-STD-020) SMT package

NEW

Skyworks offers lead (Pb)-free RoHS (Restriction of Hazardous Substances) compliant packaging.



Description

Skyworks SKY65338 is a high-efficiency Front-End Module (FEM) that incorporates a transmit and receive path, and an antenna transmit/receive (T/R) switch.

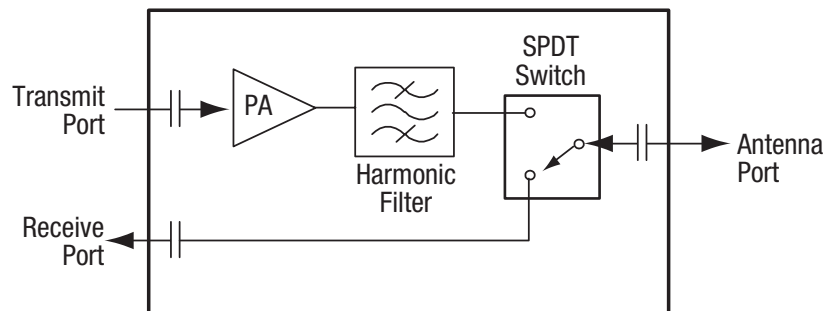
The transmit path consists of a high efficiency Power Amplifier (PA) followed by an harmonic filter for rejection of harmonic frequencies.

The PA is implemented using Skyworks high reliability Heterojunction Bipolar Transistor (HBT) process and is Class AB biased to provide maximum efficiency with a low spurious output.

A high linearity and high isolation Single-Pole Double-Throw (SPDT) switch is used at the common antenna interface between the transmit and receive paths. The receive path is a low insertion loss through-path with input and output ports internally matched to 50 Ω.

The device is mounted in a 12-pin, 8 x 8 mm Multi-Chip Module (MCM) Surface-Mounted Technology (SMT) package, which allows for a highly manufacturable low-cost solution.

A block diagram of the SKY65338 is shown in Figure 1. The device package and pinout for the 12-pin MCM are shown in Figure 2.



S1346

Figure 1. SKY65338 Block Diagram

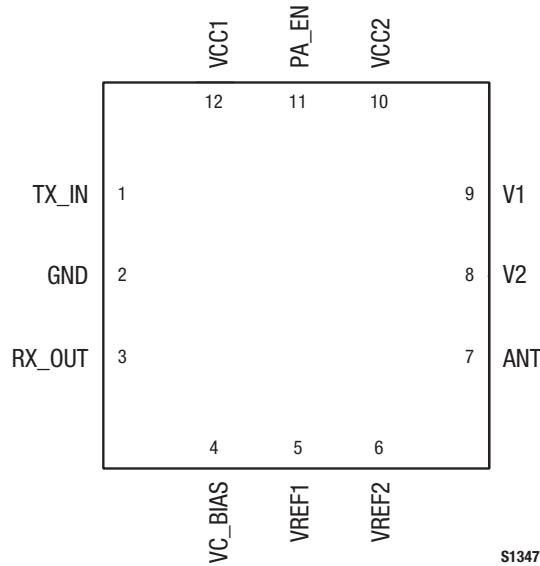


Figure 2. SKY65338 Pinout – 12-Pin MCM (Top View)

Table 1. SKY65338 SPDT Switch Control Logic

| Mode | V1 Signal (Pin 9) | V2 Signal (Pin 8) |
|----------|-------------------|-------------------|
| Transmit | 1 | 0 |
| Receive | 0 | 1 |

Note: Logic level 0: 0 V to 0.2 V
 Logic level 1: 2.0 V to 5.0 V

Technical Description

The SKY65338 provides input and output amplifier stages, and is internally matched for optimum efficiency. An active bias circuit provides the input and output stages with excellent gain tracking over temperature and voltage variations. The module operates with positive DC voltages, and maintains high efficiency and good linearity. The nominal operating voltage is 3.6 V for maximum power, but the device can be operated at slightly lower voltages for other mobile applications.

The SKY65338 is internally matched for optimum linearity and efficiency. The input and output stages are independently supplied using the VCC1 and VCC2 supply lines (pins 12 and 10, respectively). The bias reference voltages for stages 1 and 2 are supplied using common lines VREF1 and VREF2 (pins 5 and 6, respectively). The DC control voltage that sets the bias for stages 1 and 2 is supplied by the VC_BIAS signal, pin 4.

Operational Modes

The module’s receive and transmit modes are configured using the V1 and V2 control signals (pins 9 and 8, respectively). The transmit path provides an harmonic filter and high efficiency PA.

The receive path provides a low loss <1 dB bypass between the antenna port and the receive port.

Table 1 provides the SPDT transmit/receive switch control logic.

Electrical and Mechanical Specifications

Signal pin assignments and functional pin descriptions are described in Table 2. The absolute maximum ratings of the SKY65338 are provided in Table 3. The recommended operating conditions are specified in Table 4 and electrical specifications are provided in Table 5.

Typical performance characteristics of the SKY65338 are illustrated in Figures 3, 4, and 5.

Package and Handling Information

Since the device package is sensitive to moisture absorption, it is baked and vacuum packed before shipping. Instructions on the shipping container label regarding exposure to moisture after the container seal is broken must be followed. Otherwise, problems

related to moisture absorption may occur when the part is subjected to high temperature during solder assembly.

The SKY65338 is rated to Moisture Sensitivity Level 3 (MSL3) at 260 °C. It can be used for lead or lead-free soldering. For additional information, refer to Skyworks Application Note, *PCB Design and SMT Assembly/Rework Guidelines for MCM-L Packages*, document number 101752.

Care must be taken when attaching this product, whether it is done manually or in a production solder reflow environment. Production quantities of this product are shipped in a standard tape and reel format. For packaging details, refer to the Skyworks Application Note, *Tape and Reel*, document number 101568.

Table 2. SKY65338 Signal Descriptions

| Pin # | Name | Description | Pin # | Name | Description |
|-------|---------|-------------------|-------|-------|---|
| 1 | TX_IN | Transmit RF input | 7 | ANT | Antenna |
| 2 | GND | Ground | 8 | V2 | Switch logic (see Table 1) |
| 3 | RX_OUT | Receive RF output | 9 | V1 | Switch logic (see Table 1) |
| 4 | VC_BIAS | +3.6 V DC supply | 10 | VCC2 | +3.6 V DC supply |
| 5 | VREF1 | +3.6 V DC supply | 11 | PA_EN | PA enable switch (On = 2.5-3.6 V; Off = 0-0.2 V) |
| 6 | VREF2 | +3.6 V DC supply | 12 | VCC1 | +3.6 V DC supply |

Table 3. SKY65338 Absolute Maximum Ratings (Note 1)

| Parameter | Symbol | Minimum | Maximum | Units |
|----------------------------|-----------------|---------|---------|-------|
| Supply voltage | VCC | | 4.4 | V |
| Input power | P _{IN} | | +5 | dBm |
| Supply current | I _{CC} | | 800 | mA |
| Case operating temperature | T _c | -40 | +85 | °C |
| Storage temperature | T _{ST} | -65 | +125 | °C |
| Junction temperature | T _J | | 150 | °C |

Note 1: Exposure to maximum rating conditions for extended periods may reduce device reliability. There is no damage to device with only one parameter set at the limit and all other parameters set at or below their nominal value.

Table 4. SKY65338 Recommended Operating Conditions

| Parameter | Symbol | Minimum | Typical | Maximum | Units |
|----------------------------|-----------------------------------|---------|---------|---------|-------|
| Supply voltage | VCC1, VCC2, VREF1, VREF2, VC_BIAS | 3.0 | 3.6 | 4.0 | V |
| Case operating temperature | T _c | -40 | | +85 | °C |
| Storage temperature | T _{ST} | -55 | | +125 | °C |

Table 5. SKY65338 Electrical Specifications
 (Frequency = 460 MHz, VCC1 = VCC2 = VREF1 = VREF2 = VC_BIAS = 3.6 V, Tc = +25 °C, Unless Otherwise Noted)

| Parameter | Symbol | Test Condition | Min | Typical | Max | Units |
|--|---------------------|-------------------------------------|-----|---------|-----|-------|
| Operating frequency range | f | | 450 | | 470 | MHz |
| Transmit path small signal gain | G | CW, P _{IN} = -30 dBm | 30 | 32 | | dB |
| Transmit saturated output power | P _{SAT} | CW, P _{IN} = -4 dBm | +25 | +27 | | dBm |
| Transmit path Noise Figure | NF | | | 5.5 | 6.5 | dB |
| Transmit path harmonics (2 nd to 10 th) | Pf2 to Pf10 | CW, P _{OUT} = +25 dBm | 55 | 59 | | dBc |
| Power Added Efficiency | PAE | CW, P _{OUT} = +27 dBm | 30 | 36 | | % |
| Receive path insertion loss | Rx_LOSS | | | 0.8 | 1.0 | dB |
| Transmit/receive path isolation | IsOL | CW | 27 | 30 | | dB |
| Input return loss | S11 | | 15 | 17 | | dB |
| Output return loss | S22 | | 9 | 12 | | dB |
| Quiescent current | I _Q | No RF | | 50 | 55 | mA |
| Operating current | I _{OP} | P _{OUT} = +25 dBm | | 300 | 350 | mA |
| Leakage current | I _{LEAK} | No RF input, module in standby mode | | 2 | | μA |
| Maximum VSWR for stable operation | VSWR _{MAX} | CW | 6:1 | 8:1 | | — |

Evaluation Board Description

The SKY65338 Evaluation Board is used to test the performance of the SKY65338 FEM. The Evaluation Board schematic diagram is shown in Figure 6. An assembly drawing for the Evaluation Board is shown in Figure 7 and the layer detail is provided in Figure 8. The layer detail physical characteristics are noted in Figure 9. Table 6 provides the Bill of Materials (BOM) list for Evaluation Board components.

Circuit Design Considerations

The following design considerations are general in nature and must be followed regardless of final use or configuration:

1. Paths to ground should be made as short as possible.
2. The ground pad of the SKY65338 has special electrical and thermal grounding requirements. This pad is the main thermal conduit for heat dissipation. Since the circuit board acts as the heat sink, it must shunt as much heat as possible from the device. Therefore, design the connection to the ground pad to dissipate the maximum wattage produced by the circuit board. Multiple vias to the grounding layer are required.

NOTE: A poor connection between the slug and ground increases junction temperature (T_J), which reduces the lifetime of the device.

Package Dimensions

The phone board layout footprint for the SKY65338 is shown in Figure 10. Package dimensions for the 12-pin MCM are shown in Figure 11, and tape and reel dimensions are provided in Figure 12.

Electrostatic Discharge (ESD) Sensitivity

The SKY65338 is a static-sensitive electronic device. Do not operate or store near strong electrostatic fields. Take proper ESD precautions.

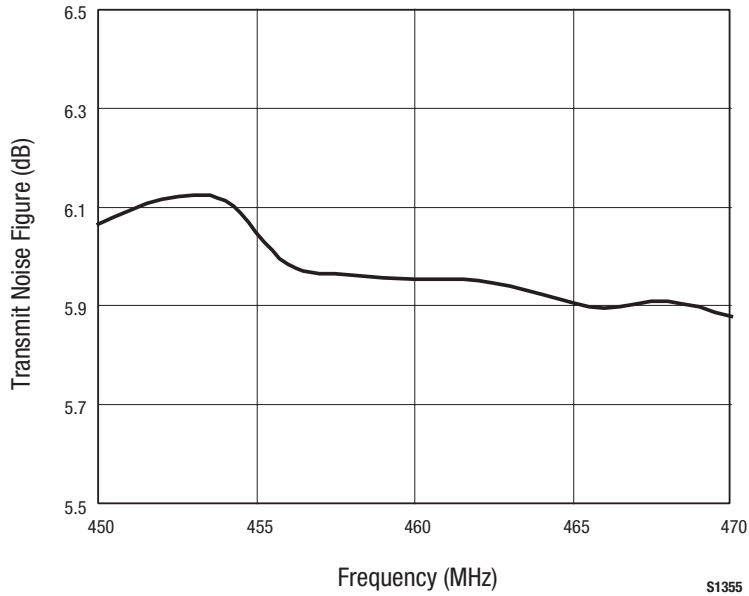


Figure 3. Noise Figure vs Frequency

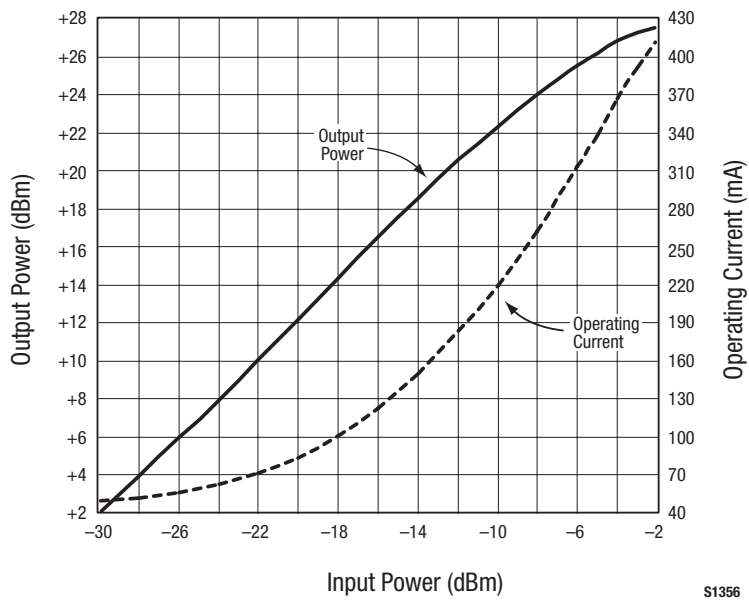


Figure 4. Output Power and Current Consumption vs Input Power

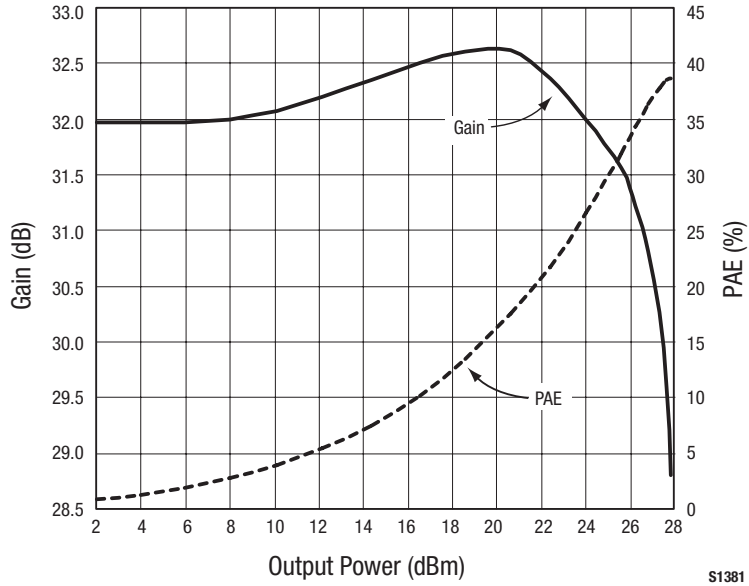


Figure 5. Gain and PAE vs Output Power

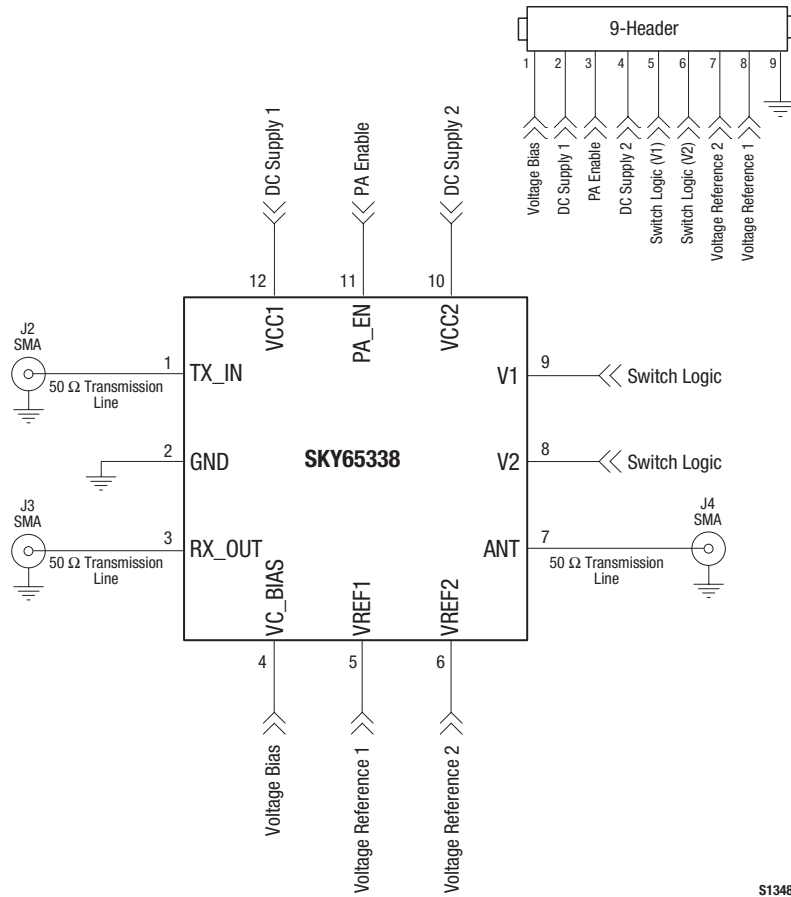
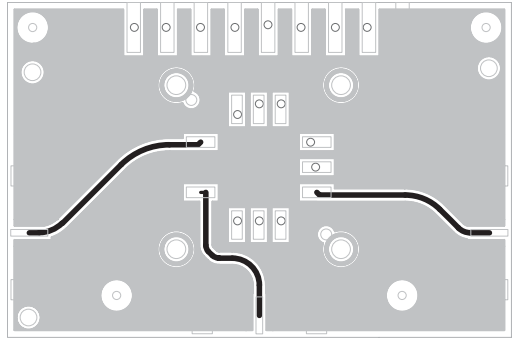


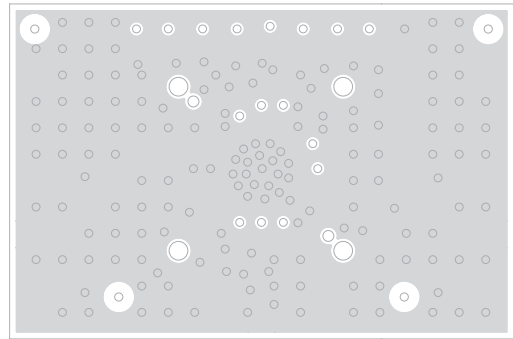
Figure 6. SKY65338 Evaluation Board Schematic

*** TBD ***

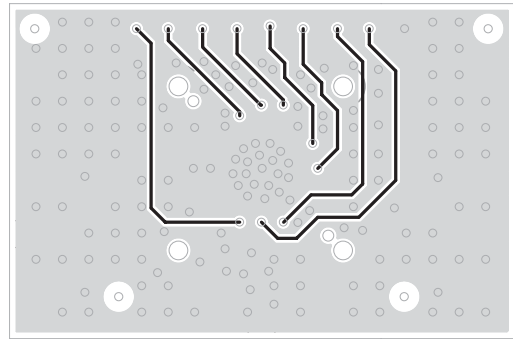
Figure 7. SKY65338 Evaluation Board Assembly Drawing



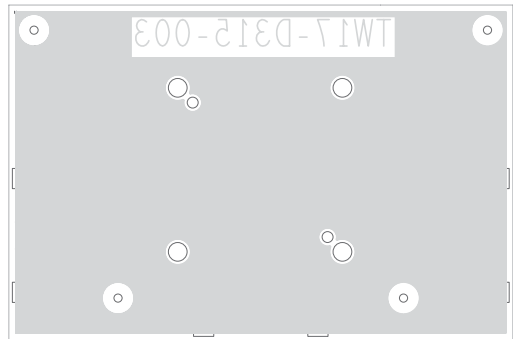
Layer 1: Top – Metal



Layer 2: Ground



Layer 3: Power Plane



Layer 4: Solid Ground Plane

S1349

Figure 8. SKY65338 Evaluation Board Layer Detail

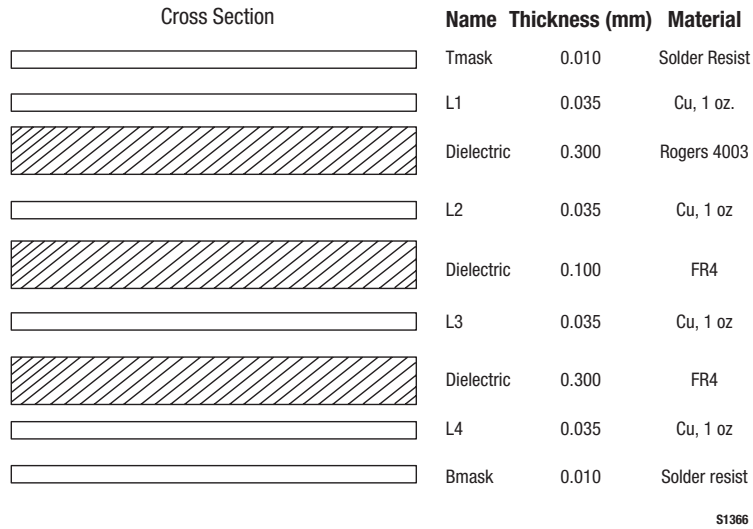
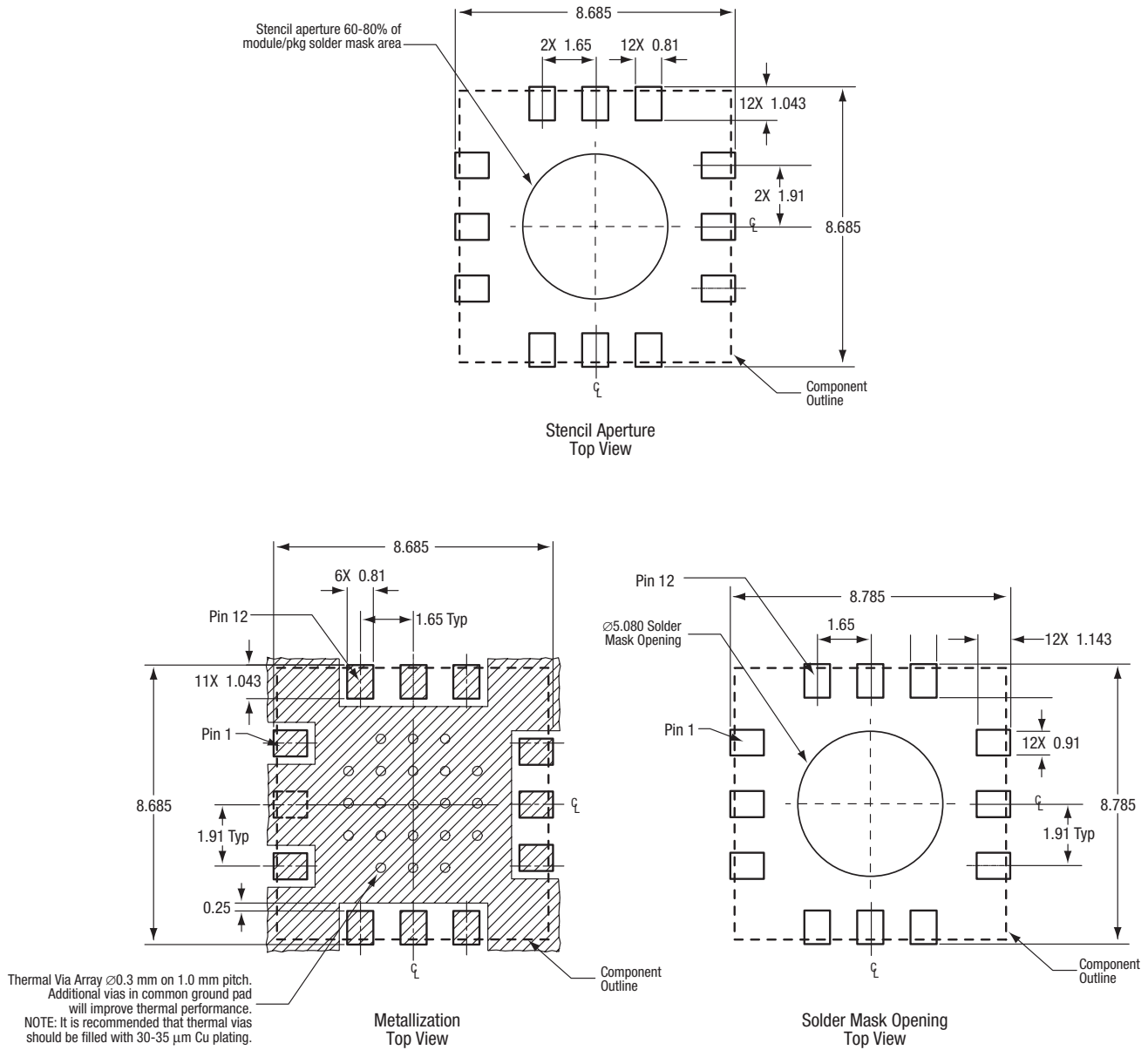


Figure 9. Layer Detail Physical Characteristics

Table 6. SKY65338 Evaluation Board Bill of Materials

| Component | Quantity | Size | Value | Vendor | Part Number |
|--------------------|----------|------|-------|--------|-------------|
| J2, J3, J4 | 3 | | | | 615R54-021 |
| SC1, SC2, SC3, SC4 | 4 | | | | 92196A052 |
| Backframe | 1 | | | | 1056-101 |

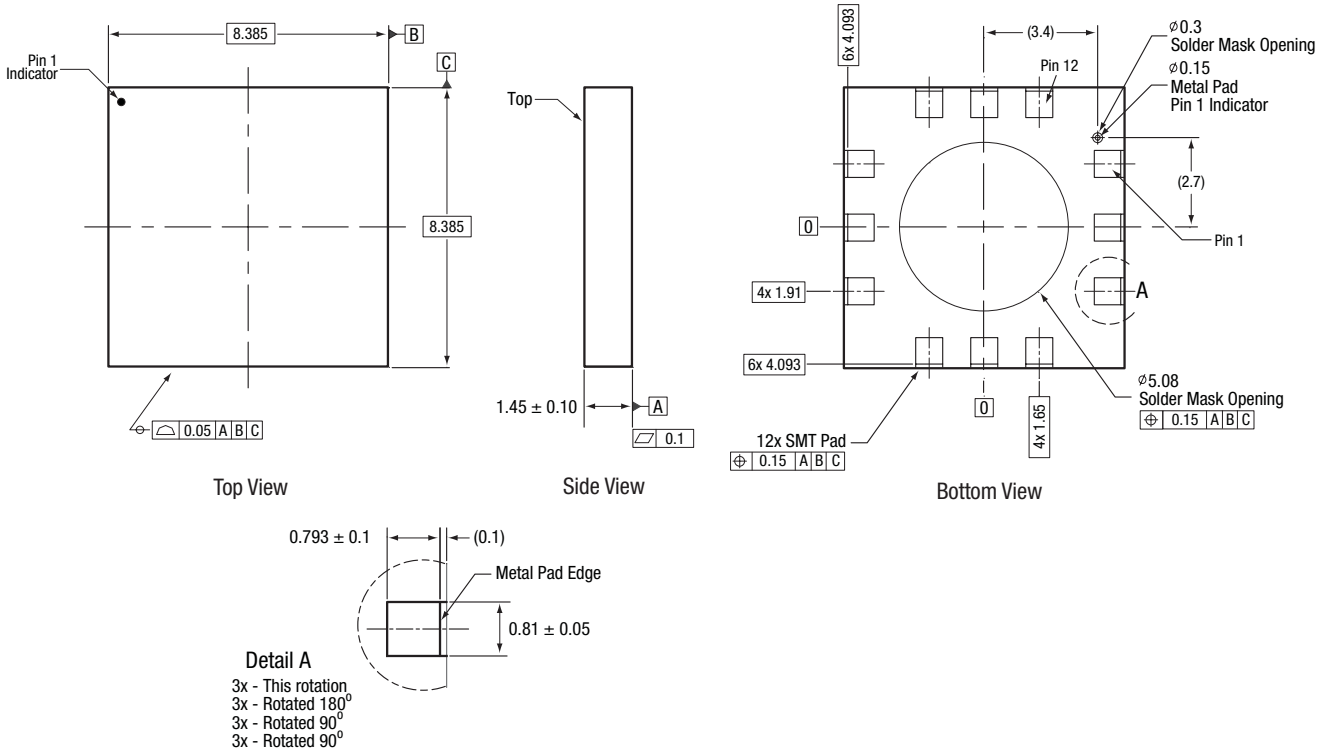
PRELIMINARY DATA SHEET • SKY65338 TRANSMIT/RECEIVE FRONT-END MODULE



All measurements are in millimeters

S1357

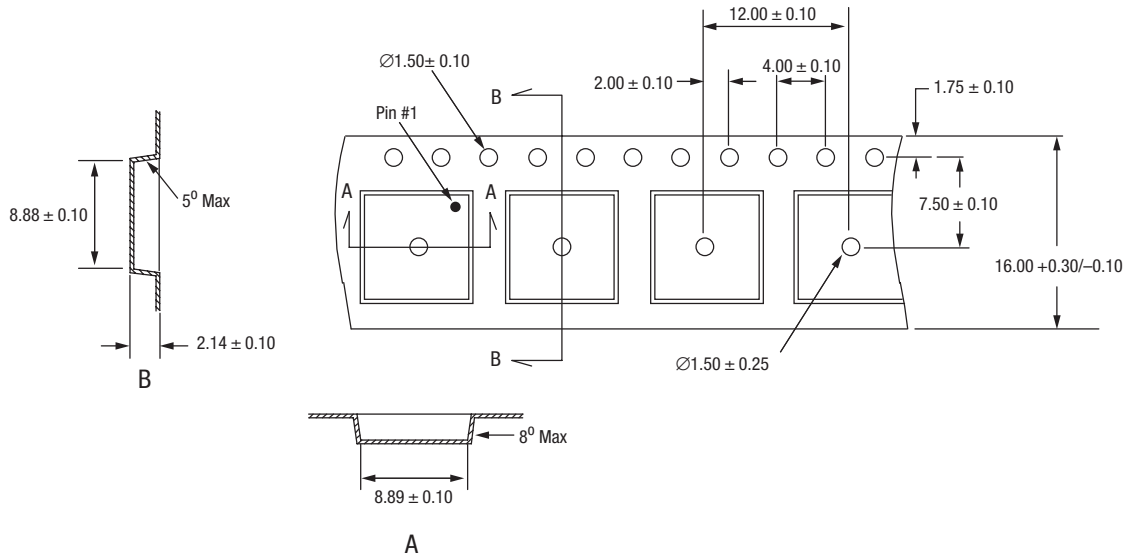
Figure 10. SKY65338 Phone Board Layout Footprint



Dimensioning and tolerancing according to ASME Y14.5M-1994.
 All measurements are in millimeters

S1354

Figure 11. SKY65338 12-Pin MCM Package Dimensions



S1252

Figure 12. SKY65338 12-Pin MCM Tape and Reel Dimensions

Ordering Information

| Model Name | Manufacturing Part Number | Evaluation Kit Part Number |
|---------------------------------------|----------------------------|----------------------------|
| SKY65338 450-470 MHz Front-End Module | SKY65338 (Pb-free package) | TW17-D315-003 |

Copyright © 2009 Skyworks Solutions, Inc. All Rights Reserved.

Information in this document is provided in connection with Skyworks Solutions, Inc. ("Skyworks") products or services. These materials, including the information contained herein, are provided by Skyworks as a service to its customers and may be used for informational purposes only by the customer. Skyworks assumes no responsibility for errors or omissions in these materials or the information contained herein. Skyworks may change its documentation, products, services, specifications or product descriptions at any time, without notice. Skyworks makes no commitment to update the materials or information and shall have no responsibility whatsoever for conflicts, incompatibilities, or other difficulties arising from any future changes.

No license, whether express, implied, by estoppel or otherwise, is granted to any intellectual property rights by this document. Skyworks assumes no liability for any materials, products or information provided hereunder, including the sale, distribution, reproduction or use of Skyworks products, information or materials, except as may be provided in Skyworks Terms and Conditions of Sale.

THE MATERIALS, PRODUCTS AND INFORMATION ARE PROVIDED "AS IS" WITHOUT WARRANTY OF ANY KIND, WHETHER EXPRESS, IMPLIED, STATUTORY, OR OTHERWISE, INCLUDING FITNESS FOR A PARTICULAR PURPOSE OR USE, MERCHANTABILITY, PERFORMANCE, QUALITY OR NON-INFRINGEMENT OF ANY INTELLECTUAL PROPERTY RIGHT; ALL SUCH WARRANTIES ARE HEREBY EXPRESSLY DISCLAIMED. SKYWORKS DOES NOT WARRANT THE ACCURACY OR COMPLETENESS OF THE INFORMATION, TEXT, GRAPHICS OR OTHER ITEMS CONTAINED WITHIN THESE MATERIALS. SKYWORKS SHALL NOT BE LIABLE FOR ANY DAMAGES, INCLUDING BUT NOT LIMITED TO ANY SPECIAL, INDIRECT, INCIDENTAL, STATUTORY, OR CONSEQUENTIAL DAMAGES, INCLUDING WITHOUT LIMITATION, LOST REVENUES OR LOST PROFITS THAT MAY RESULT FROM THE USE OF THE MATERIALS OR INFORMATION, WHETHER OR NOT THE RECIPIENT OF MATERIALS HAS BEEN ADVISED OF THE POSSIBILITY OF SUCH DAMAGE.

Skyworks products are not intended for use in medical, lifesaving or life-sustaining applications, or other equipment in which the failure of the Skyworks products could lead to personal injury, death, physical or environmental damage. Skyworks customers using or selling Skyworks products for use in such applications do so at their own risk and agree to fully indemnify Skyworks for any damages resulting from such improper use or sale.

Customers are responsible for their products and applications using Skyworks products, which may deviate from published specifications as a result of design defects, errors, or operation of products outside of published parameters or design specifications. Customers should include design and operating safeguards to minimize these and other risks. Skyworks assumes no liability for applications assistance, customer product design, or damage to any equipment resulting from the use of Skyworks products outside of stated published specifications or parameters.

Skyworks, the Skyworks symbol, and "Breakthrough Simplicity" are trademarks or registered trademarks of Skyworks Solutions, Inc., in the United States and other countries. Third-party brands and names are for identification purposes only, and are the property of their respective owners. Additional information, including relevant terms and conditions, posted at www.skyworksinc.com, are incorporated by reference.