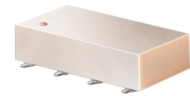


# Power Splitter/Combiner

## SCP-3-1+ SCP-3-1

3 Way-0° 50Ω 1 to 300 MHz



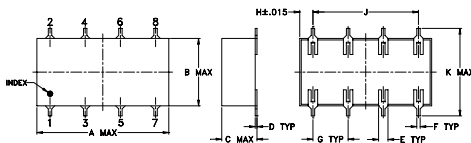
### Maximum Ratings

Operating Temperature	-40°C to 85°C
Storage Temperature	-55°C to 100°C
Power Input (as a splitter)	1W max.
Internal Dissipation	0.375W max.

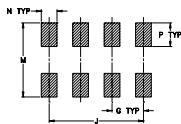
### Pin Connections

SUM PORT	6
PORT 1	1
PORT 2	2
PORT 3	5
GROUND	3,4,7,8

### Outline Drawing



#### PCB Land Pattern

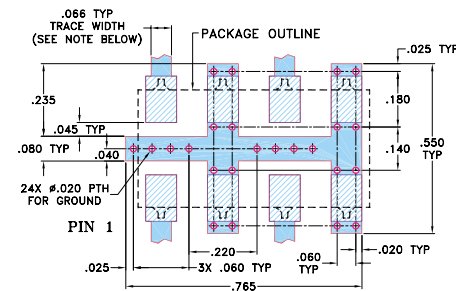


Suggested Layout,  
Tolerance to be within ±.002

### Outline Dimensions (inch/mm)

A	B	C	D	E	F	G
.75	.38	.20	.010	.050	.020	.200
19.05	9.65	5.08	0.25	1.27	0.51	5.08
H	J	K	M	N	P	wt
.075	.600	.450	.470	.100	.150	grams
1.91	15.24	11.43	11.94	2.54	3.81	1.6

### Demo Board MCL P/N: TB-51 Suggested PCB Layout (PL-062)



- NOTES: 1. TRACE WIDTH IS SHOWN FOR ROGERS RO4350B WITH DIELECTRIC THICKNESS .030" ± .002". COPPER: 1/2 OZ. EACH SIDE. FOR OTHER MATERIALS TRACE WIDTH MAY NEED TO BE MODIFIED.  
2. BOTTOM SIDE OF THE PCB IS CONTINUOUS GROUND PLANE.  
■ DENOTES PCB COPPER LAYOUT WITH SMOBC (SOLDER MASK OVER BARE COPPER)  
■ DENOTES COPPER LAND PATTERN FREE OF SOLDER MASK

### Features

- low insertion loss, 0.4 dB typ.
- good isolation, 25 dB typ.
- excellent output VSWR, 1.1:1 typ.

### Applications

- VHF/UHF receivers/transmitters
- communications system

CASE STYLE: YY101  
PRICE: \$16.95 ea. QTY. (1-9)

+ RoHS compliant in accordance with EU Directive (2002/95/EC)

The +Suffix identifies RoHS Compliance. See our web site for RoHS Compliance methodologies and qualifications.

### Electrical Specifications

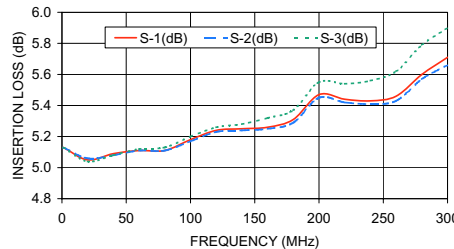
FREQ. RANGE (MHz)	ISOLATION (dB)			INSERTION LOSS (dB) ABOVE 4.8 dB			PHASE UNBALANCE (Degrees)			AMPLITUDE UNBALANCE (dB)		
	L	M	U	L	M	U	L	M	U	L	M	U
$f_c - f_u$	Typ.	Min.	Typ. Min.	Typ. Min.	Typ. Max.	Typ. Max.	Typ. Max.	Max.	Max.	Max.	Max.	Max.
1-300	30	25	25	20	20	15	0.3	0.6	0.4	0.8	0.7	1.5

L = low range [ $f_c$  to 10  $f_u$ ] M = mid range [10  $f_c$  to  $f_u/2$ ] U = upper range [ $f_u/2$  to  $f_u$ ]

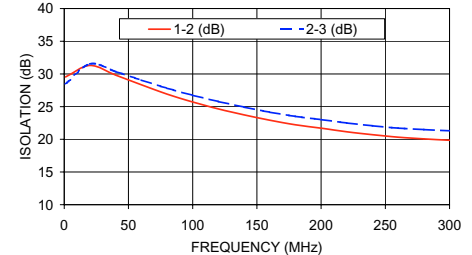
### Typical Performance Data

Freq. (MHz)	Insertion Loss (dB)			Amp. Unbal. (dB)	Isolation (dB)		Phase Unbal. (deg.)	VSWR S	VSWR 1	VSWR 2	VSWR 3
	S-1	S-2	S-3		1-2	2-3					
1.00	5.13	5.13	5.13	0.01	29.54	28.48	0.02	1.17	1.19	1.19	1.20
20.00	5.05	5.06	5.04	0.02	31.30	31.53	0.11	1.12	1.06	1.06	1.06
40.00	5.09	5.08	5.08	0.01	29.82	30.37	0.19	1.13	1.06	1.06	1.06
60.00	5.11	5.11	5.12	0.00	28.34	29.07	0.33	1.15	1.06	1.06	1.06
80.00	5.11	5.11	5.13	0.02	26.92	27.83	0.44	1.17	1.06	1.06	1.05
100.00	5.18	5.17	5.20	0.03	25.71	26.74	0.56	1.19	1.07	1.06	1.05
120.00	5.24	5.23	5.26	0.03	24.65	25.78	0.67	1.22	1.07	1.06	1.05
140.00	5.25	5.24	5.28	0.04	23.74	24.93	0.75	1.25	1.08	1.07	1.05
160.00	5.26	5.25	5.32	0.07	22.93	24.16	0.80	1.27	1.08	1.07	1.05
180.00	5.31	5.29	5.37	0.08	22.22	23.51	0.86	1.29	1.08	1.07	1.05
200.00	5.47	5.45	5.55	0.10	21.71	23.02	1.00	1.32	1.09	1.08	1.05
220.00	5.44	5.42	5.54	0.12	21.15	22.50	1.04	1.34	1.09	1.08	1.06
240.00	5.43	5.41	5.56	0.16	20.71	22.08	1.09	1.36	1.10	1.08	1.06
260.00	5.46	5.43	5.62	0.19	20.32	21.72	1.23	1.37	1.10	1.09	1.06
280.00	5.60	5.57	5.79	0.22	20.06	21.49	1.26	1.39	1.10	1.09	1.06
300.00	5.71	5.66	5.90	0.24	19.86	21.31	1.27	1.40	1.10	1.09	1.06

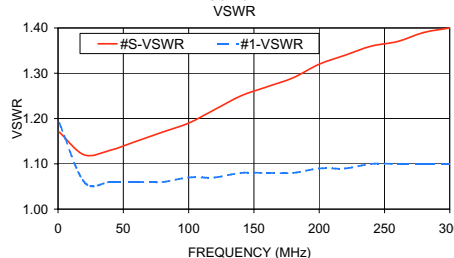
SCP-3-1 INSERTION LOSS



SCP-3-1 ISOLATION



SCP-3-1 VSWR



### electrical schematic



**Mini-Circuits**  
ISO 9001 ISO 14001 CERTIFIED

ALL NEW  
minicircuits.com

P.O. Box 350166, Brooklyn, New York 11235-0003 (718) 934-4500 Fax (718) 332-4661 For detailed performance specs & shopping online see Mini-Circuits web site



The Design Engineers Search Engine Provides ACTUAL Data Instantly From MINI-CIRCUITS At: [www.minicircuits.com](http://www.minicircuits.com)

RF/IF MICROWAVE COMPONENTS

REV. A  
M98898  
SCP-3-1  
HY/TD/CP  
070521