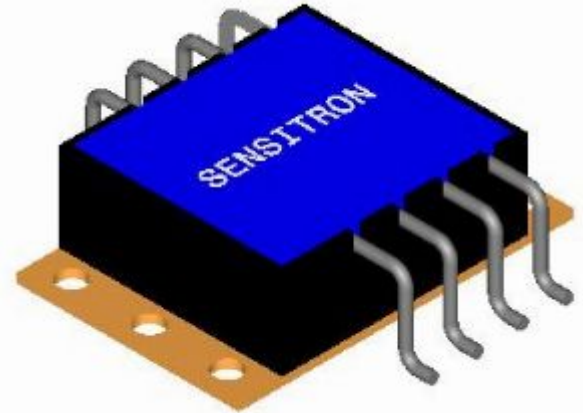
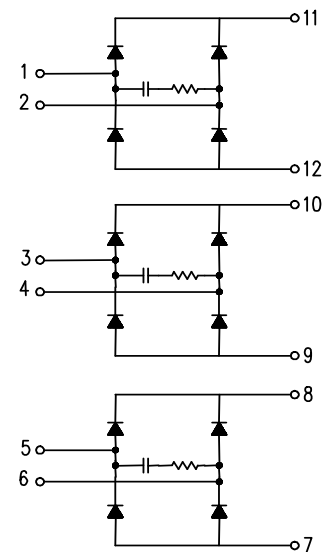
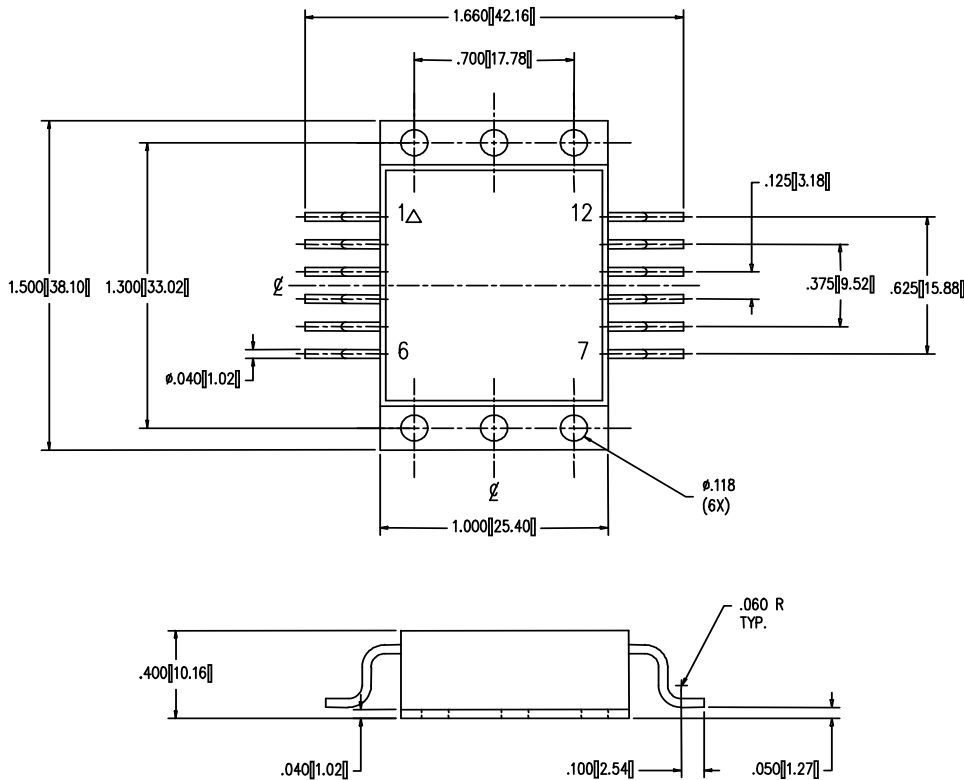






# SCP-1839, SCP-1840, SCP-1841 RECTIFIER BRIDGE

- HIGH CURRENT
- LOW THERMAL RESISTANCE
- AVAILABLE IN PN OR SCHOTTKY DEVICES
- VARIOUS VOLTAGES AND CURRENTS
- VARIOUS REVERSE RECOVERY TIMES



RATING FOR SCP-1839	SYMBOL	MAX.	UNITS
BREAKDOWN VOLTAGE	$V_{BR}$	100	VOLTS
FORWARD CURRENT	$I_F$	40	AMPS
FORWARD VOLTAGE	$V_F$	0.85	VOLTS



<b>CUSTOM PRODUCTS</b>					
DEVICE TYPE/ CONFIGURATION	PACKAGE TYPE		ABSOLUTE MAXIMUM RATINGS		
			VOLTAGE	CURRENT	R <sub>θJC</sub>
<b>RECTIFIER BRIDGES</b>  Custom packages.  Any types of leads or terminals.		POTTED MODULE REF# 1462	<b>400 Volts</b>	<b>70 Amp</b>	<b>0.35 °C/W</b>
		POTTED MODULE REF# 1840	<b>Power Dissipation: 17 Watt @ 100Volts</b>		<b>0.20 °C/W</b>
		POTTED MODULE REF# 1839	<b>Power Dissipation: 50 Watt @ 100Volts</b>		<b>0.25 °C/W</b>
		POTTED MODULE REF# 3124	<b>100 Volts</b>	<b>120 Amp</b>	<b>0.25 °C/W</b>

Note: Listed maximum ratings are for reference only. Products can be modified to meet any customer requirements.